



This is a digital copy of a book that was preserved for generations on library shelves before it was carefully scanned by Google as part of a project to make the world's books discoverable online.

It has survived long enough for the copyright to expire and the book to enter the public domain. A public domain book is one that was never subject to copyright or whose legal copyright term has expired. Whether a book is in the public domain may vary country to country. Public domain books are our gateways to the past, representing a wealth of history, culture and knowledge that's often difficult to discover.

Marks, notations and other marginalia present in the original volume will appear in this file - a reminder of this book's long journey from the publisher to a library and finally to you.

Usage guidelines

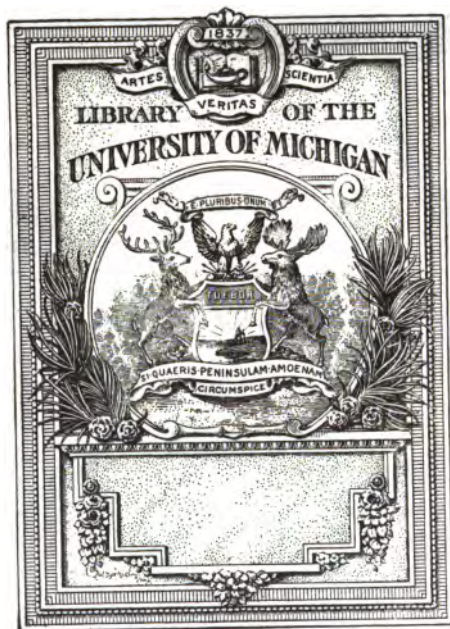
Google is proud to partner with libraries to digitize public domain materials and make them widely accessible. Public domain books belong to the public and we are merely their custodians. Nevertheless, this work is expensive, so in order to keep providing this resource, we have taken steps to prevent abuse by commercial parties, including placing technical restrictions on automated querying.

We also ask that you:

- + *Make non-commercial use of the files* We designed Google Book Search for use by individuals, and we request that you use these files for personal, non-commercial purposes.
- + *Refrain from automated querying* Do not send automated queries of any sort to Google's system: If you are conducting research on machine translation, optical character recognition or other areas where access to a large amount of text is helpful, please contact us. We encourage the use of public domain materials for these purposes and may be able to help.
- + *Maintain attribution* The Google "watermark" you see on each file is essential for informing people about this project and helping them find additional materials through Google Book Search. Please do not remove it.
- + *Keep it legal* Whatever your use, remember that you are responsible for ensuring that what you are doing is legal. Do not assume that just because we believe a book is in the public domain for users in the United States, that the work is also in the public domain for users in other countries. Whether a book is still in copyright varies from country to country, and we can't offer guidance on whether any specific use of any specific book is allowed. Please do not assume that a book's appearance in Google Book Search means it can be used in any manner anywhere in the world. Copyright infringement liability can be quite severe.

About Google Book Search

Google's mission is to organize the world's information and to make it universally accessible and useful. Google Book Search helps readers discover the world's books while helping authors and publishers reach new audiences. You can search through the full text of this book on the web at <http://books.google.com/>

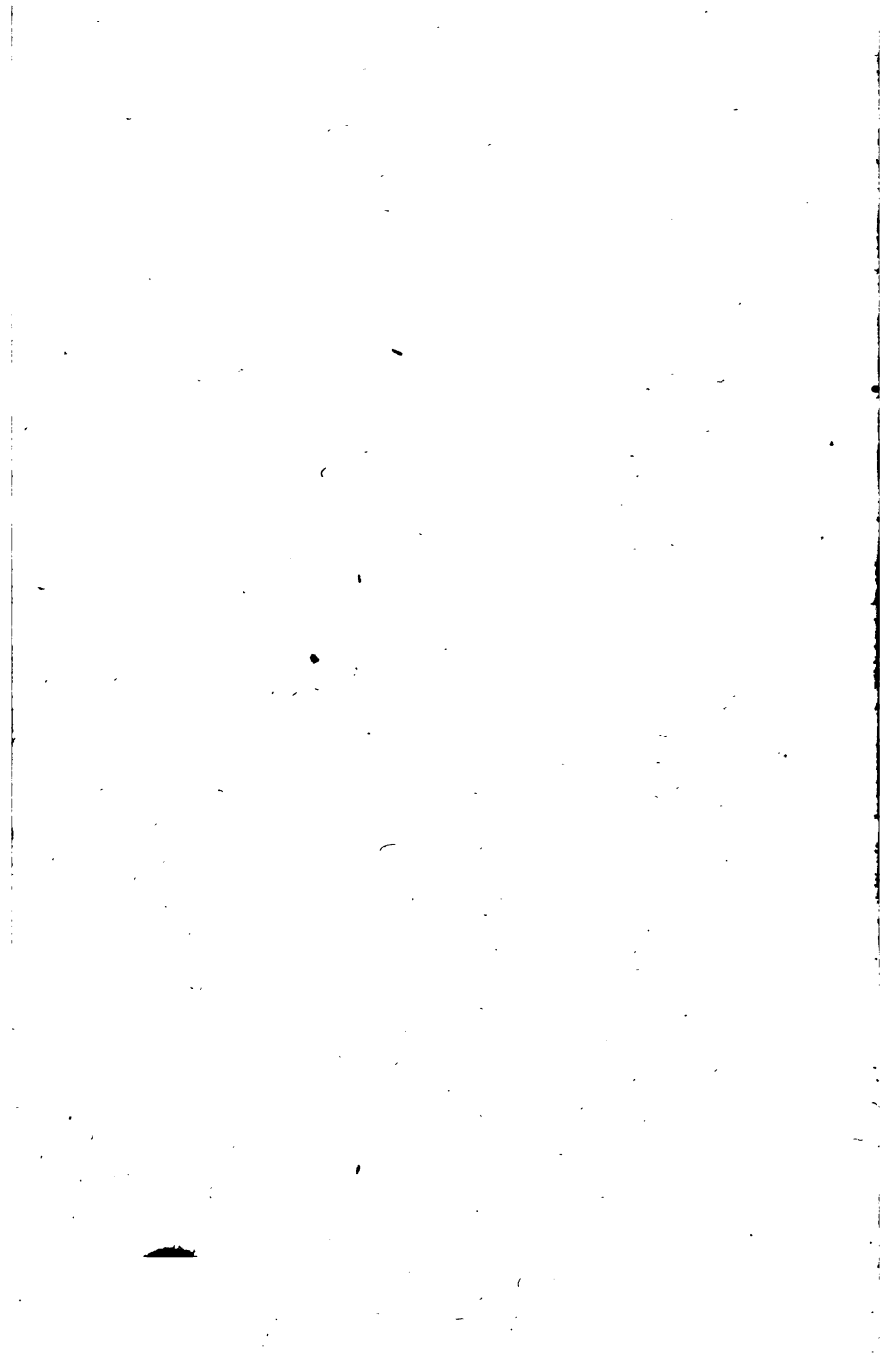


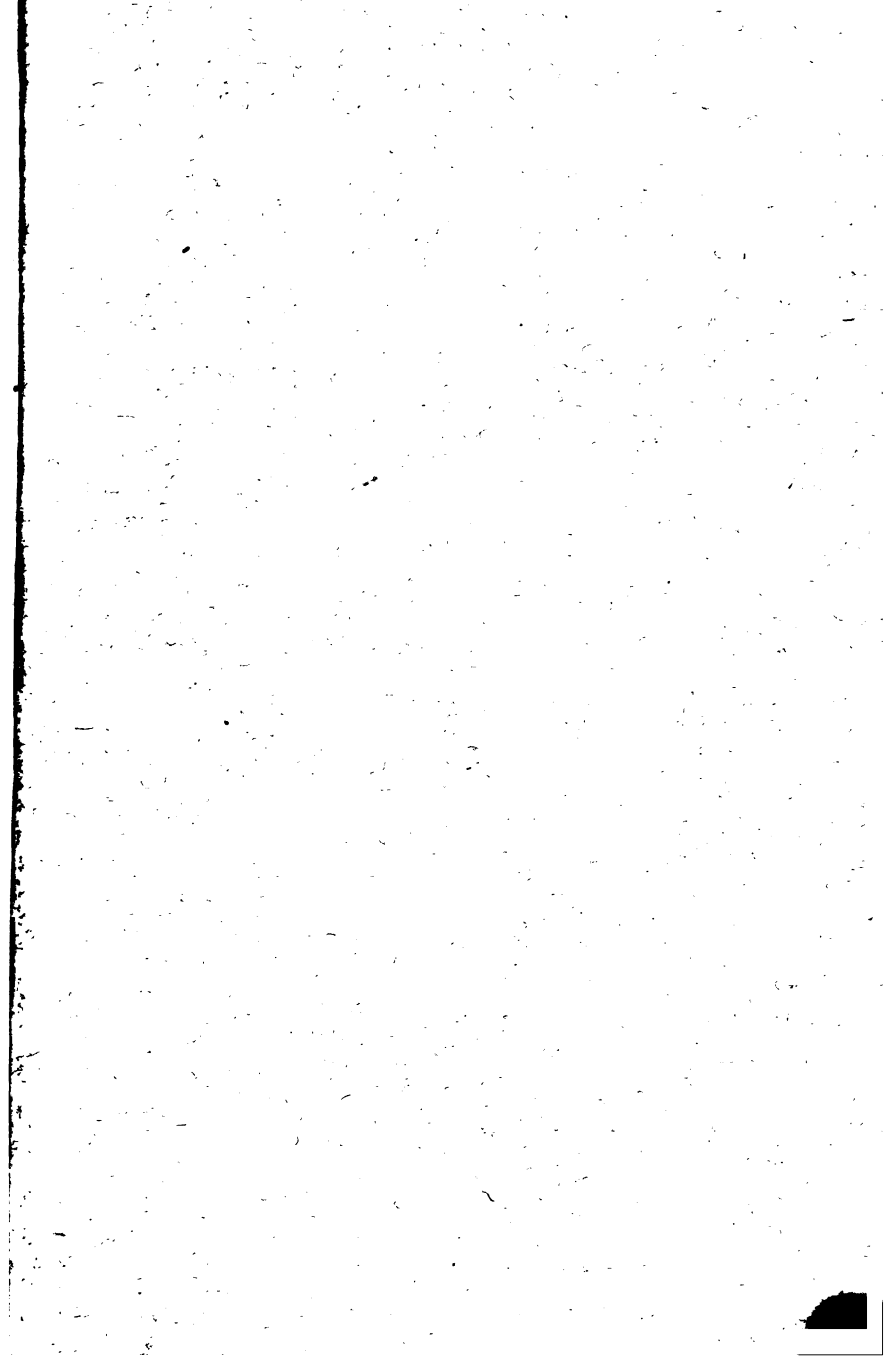
0A

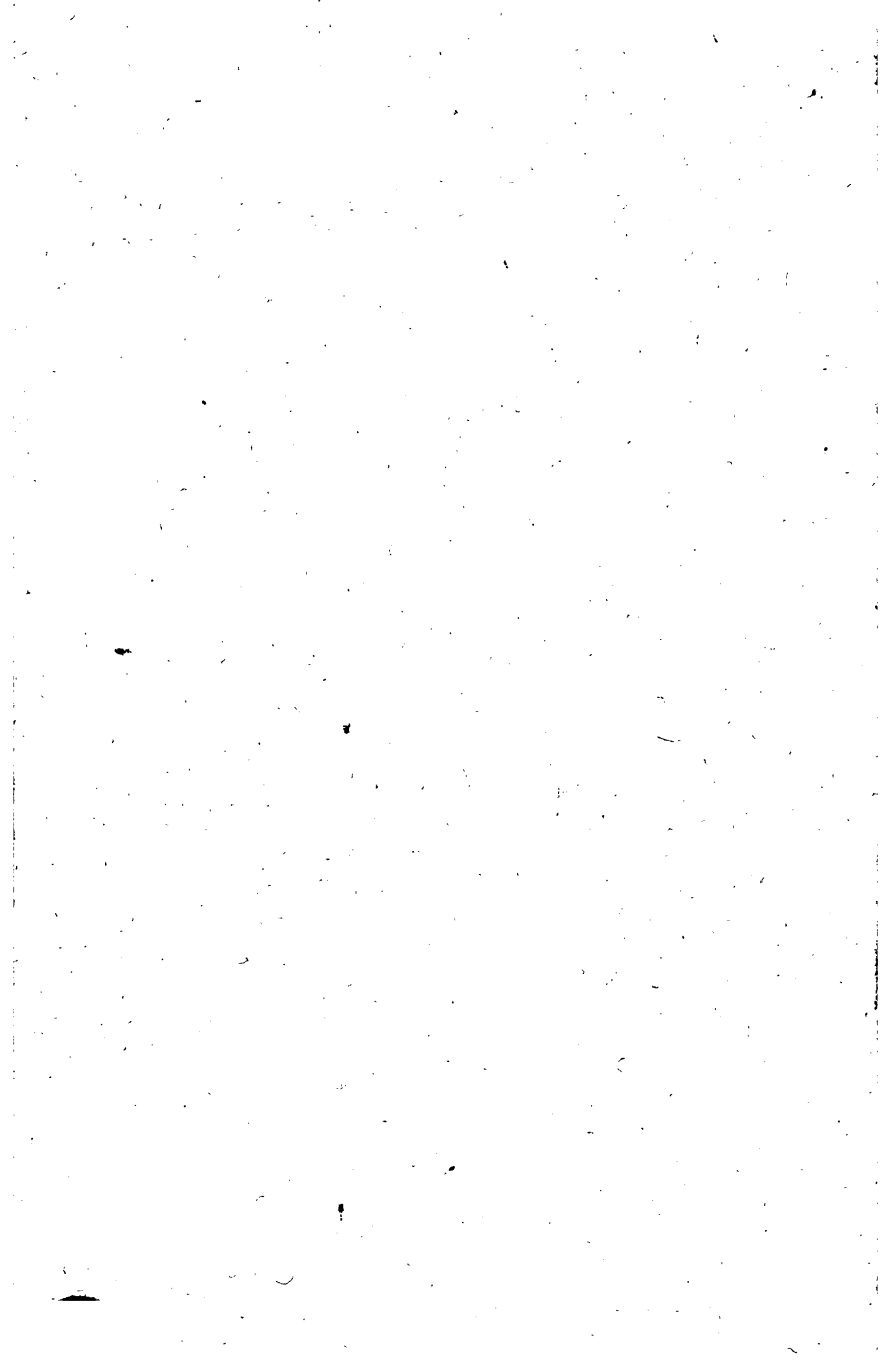
555

.T638e

1864







EDUCATIONAL MATHEMATICAL WORKS

BY

I. TODHUNTER, M.A., F.R.S.,

*Fellow and Principal Mathematical Lecturer of St John's College,
Cambridge.*

1. Euclid for Colleges and Schools. 18mo. 3s. 6d.
2. Algebra for Beginners. With numerous Examples. 18mo. 2s. 6d.
3. Algebra for the use of Colleges and Schools. With numerous Examples. Third Edition. Crown 8vo. 7s. 6d.
4. A Treatise on the Theory of Equations. With a Collection of Examples. Crown 8vo. 7s. 6d.
5. Plane Trigonometry for Colleges and Schools. With numerous Examples. Second Edition. Crown 8vo. 5s.
6. A Treatise on Conic Sections. With numerous Examples, Third Edition, Crown 8vo. 7s. 6d.

Educational Mathematical Works.

7. **A Treatise on Spherical Trigonometry for the use of Colleges and Schools. With numerous Examples. Second Edition. Crown 8vo. 4s. 6d.**
8. **A Treatise on the Differential Calculus. With numerous Examples. Fourth Edition. Crown 8vo. 10s. 6d.**
9. **A Treatise on the Integral Calculus. With numerous Examples. Second Edition. Crown 8vo. 10s. 6d.**
10. **Examples of Analytical Geometry of Three Dimensions. Second Edition. Crown 8vo. 4s.**
11. **A Treatise on Analytical Statics. With numerous Examples. Second Edition. Crown 8vo. 10s. 6d.**
12. **A History of the Progress of the Calculus of Variations during the Nineteenth Century. 8vo. 12s.**

In the Press.

A History of the Mathematical Theory of Probability, from Pascal to Laplace.

MACMILLAN AND CO. CAMBRIDGE AND LONDON.

EXAMPLES OF
ANALYTICAL GEOMETRY
OF THREE DIMENSIONS.

70. 11. 11

Cambridge:

PRINTED BY C. J. CLAY M.A.

AT THE UNIVERSITY PRESS.

5714

EXAMPLES OF
ANALYTICAL GEOMETRY
OF THREE DIMENSIONS.

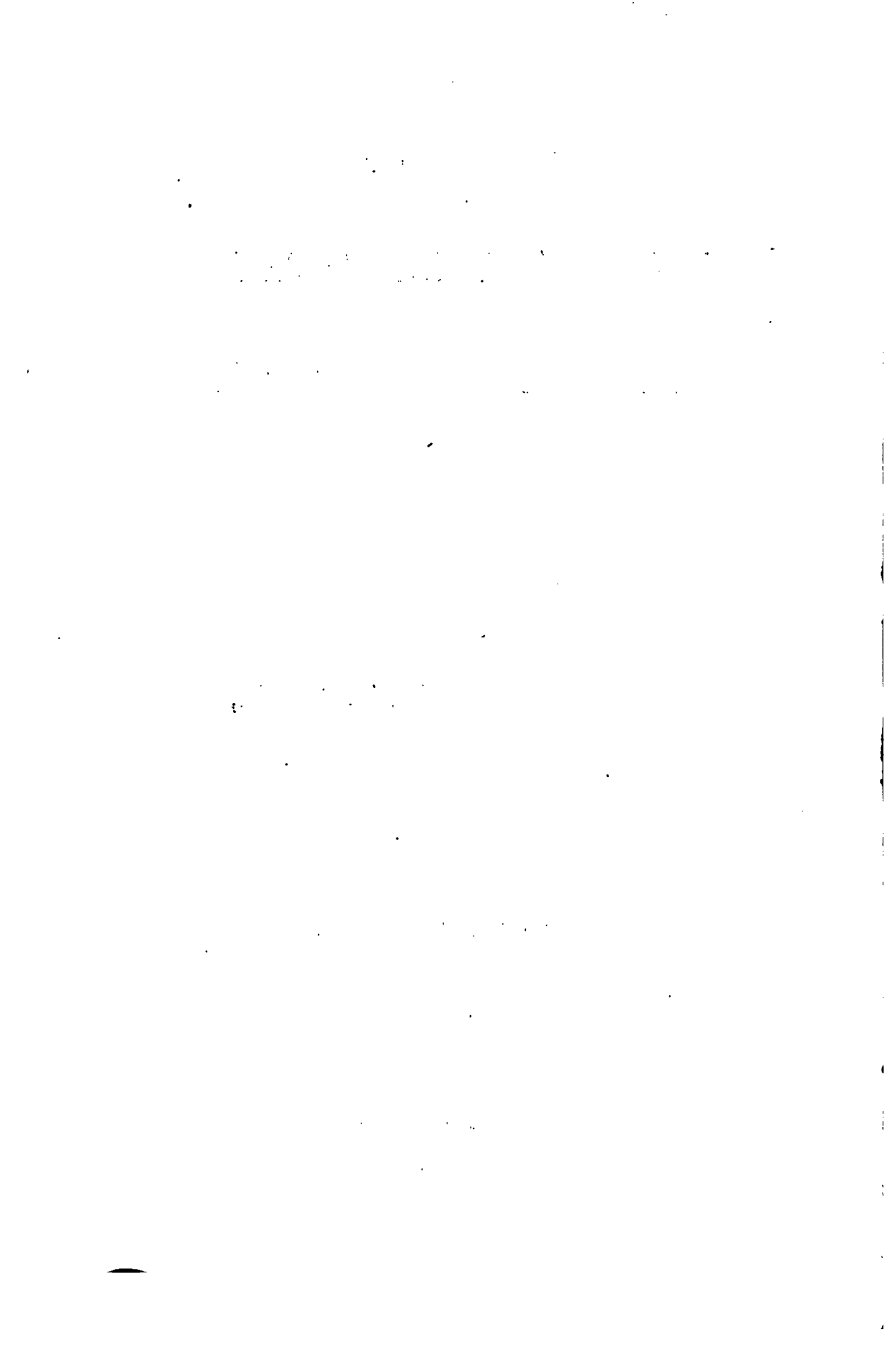
COLLECTED BY

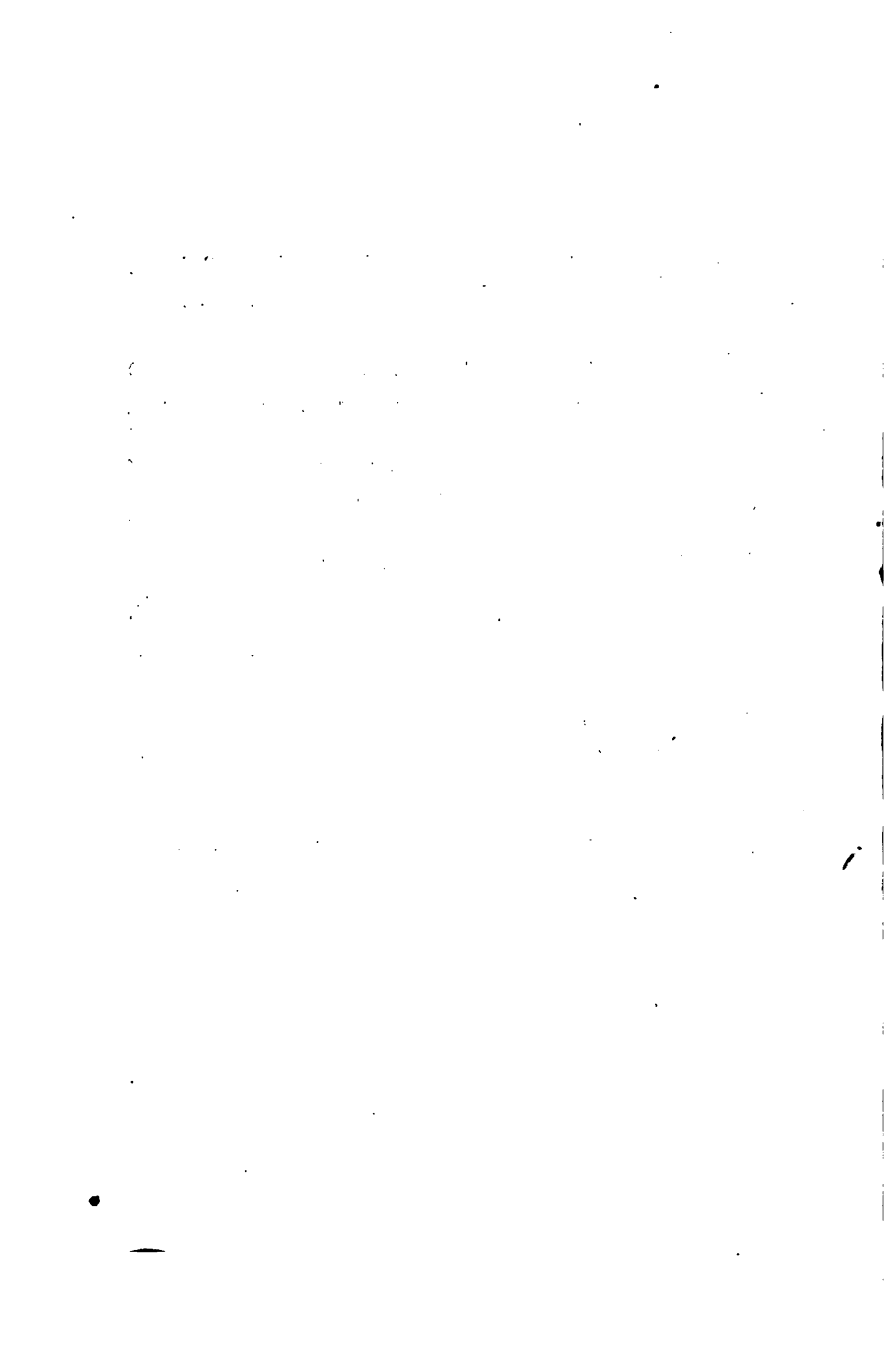
I. TODHUNTER, M.A., F.R.S.,
FELLOW AND PRINCIPAL MATHEMATICAL LECTURER
OF ST JOHN'S COLLEGE, CAMBRIDGE.

SECOND EDITION REVISED.

Cambridge and London.
MACMILLAN AND CO.
1864.

The right of Translation and Reproduction is reserved.





EXAMPLES OF ANALYTICAL GEOMETRY OF THREE DIMENSIONS.

I. *The straight line and plane.*

Let OA, OB, OC be three edges of a rectangular parallelepiped which meet at a point O ; take O for the origin and the directions of OA, OB, OC for the axes of x, y, z respectively; complete the parallelepiped; let D be the vertex opposite to A, E that opposite to B, F that opposite to C, G that opposite to O . Let $OA = a, OB = b, OC = c$; and use these data in the following Examples from 1 to 11.

1. Find the equation to the plane passing through D, E, F .
2. Find the equation to the plane passing through G, A, B .
3. Find the equation to the plane passing through G, O, A ; also the equation to the plane passing through G, O, B .
4. Find the equations to the line OG .
5. Find the equations to the lines EB and AD .
6. Find the length of the perpendicular from the origin on the plane in Example 1.
7. Find the length of the perpendicular from C on the plane in Example 2.
8. Find the angle between the planes in Example 3.
9. Find the angle between the line in Example 4, and the normal to the plane in Example 1.
10. Find the angle between the lines in Example 5.

11. Find the equations to the line which passes through O , and the centre of the face $AEFG$.

12. Interpret the equation

$$x^2 + y^2 + z^2 = (x \cos \alpha + y \cos \beta + z \cos \gamma)^2,$$

$$\text{where } \cos^2 \alpha + \cos^2 \beta + \cos^2 \gamma = 1.$$

13. Find the angle between the line $\frac{x}{2} = \frac{y}{\sqrt{3}} = \frac{z}{\sqrt{2}}$, and the line $\frac{x}{\sqrt{3}} = y, z = 0$.

14. Find the equation to the plane which contains the line whose equations are

$$Ax + By + Cz = D, \quad A'x + B'y + C'z = D',$$

$$\text{and the point } (\alpha, \beta, \gamma).$$

15. Find the equation to the plane which passes through the origin and through the line of intersection of the planes

$$Ax + By + Cz = D, \quad \text{and } A'x + B'y + C'z = D';$$

and determine the condition that it may bisect the angle between them.

16. Find the equation to the plane which passes through the two parallel lines

$$\frac{x-a}{l} = \frac{y-b}{m} = \frac{z-c}{n}; \quad \frac{x-a'}{l} = \frac{y-b'}{m} = \frac{z-c'}{n}.$$

17. The equation to *one* plane through the origin bisecting the angle between the lines through the origin, the direction cosines of which are l_1, m_1, n_1 , and l_2, m_2, n_2 , and perpendicular to the plane containing them is

$$(l_1 - l_2)x + (m_1 - m_2)y + (n_1 - n_2)z = 0;$$

and the equation to the *other* plane is

$$(l_1 + l_2)x + (m_1 + m_2)y + (n_1 + n_2)z = 0.$$

18. Shew that the equation to a plane which passes through the point (α, β, γ) and cuts off portions a, b from the axes of x and y respectively is

$$\frac{x}{a} + \frac{y}{b} - 1 = \frac{z}{\gamma} \left\{ \frac{\alpha}{a} + \frac{\beta}{b} - 1 \right\}.$$

19. Find the equation to the plane which contains a given line and is perpendicular to a given plane.

20. Shew that if the straight lines

$$\frac{x}{\alpha} = \frac{y}{\beta} = \frac{z}{\gamma}, \quad \frac{x}{\alpha^2} = \frac{y}{\beta^2} = \frac{z}{\gamma^2}, \quad \frac{x}{l} = \frac{y}{m} = \frac{z}{n},$$

lie in one plane, then

$$\frac{l}{\alpha} (b^2 - c^2) + \frac{m}{\beta} (c^2 - a^2) + \frac{n}{\gamma} (a^2 - b^2) = 0.$$

21. Find the length of the perpendicular from the point $(1, -1, 2)$ upon the line $x = y = 2z$.

22. Find the equation to the plane which passes through the lines

$$\frac{x - a}{l} = \frac{y - b}{m} = \frac{z - c}{n},$$

$$\text{and } \frac{x - a}{l'} = \frac{y - b}{m'} = \frac{z - c}{n'}.$$

23. Find the equations to a straight line which passes through the point (a, b, c) and makes a given angle with the plane

$$Ax + By + Cz = 0.$$

24. Find the equation to the plane perpendicular to a given plane, such that their line of intersection shall lie in one of the co-ordinate planes.

25. If the three adjacent edges of a cube be taken for the co-ordinate axes, find the co-ordinates of the points in which

a plane perpendicular to the diagonal through the origin and bisecting that diagonal will meet the edges.

26. Determine the plane which contains a given straight line, and makes a given angle with a given plane.

27. A straight line makes an angle of 60° with one axis, and an angle of 45° with another; what angle does it make with the third axis?

28. Interpret $x^2 = y^2 = z^2$.

29. Find the condition that must hold in order that the equations

$$x = cy + bz, \quad y = az + cx, \quad z = bx + ay$$

may represent a straight line; and shew that the equations to the line then are

$$\frac{x}{\sqrt{(1-a^2)}} = \frac{y}{\sqrt{(1-b^2)}} = \frac{z}{\sqrt{(1-c^2)}} \quad \cdot$$

30. Through the origin and the line of intersection of the planes

$$x \cos \alpha + y \cos \beta + z \cos \gamma - p = 0,$$

$$\text{and } x \cos \alpha_1 + y \cos \beta_1 + z \cos \gamma_1 - p_1 = 0,$$

a plane is drawn; perpendicular to this plane and through its line of intersection with the plane of (x, y) another plane is drawn; find its equation.

31. Find the equation to the plane which passes through a given point and is perpendicular to the line of intersection of two given planes.

32. From any point P are drawn PM, PN perpendicular to the planes of (z, x) and (z, y) ; if O be the origin, $\alpha, \beta, \gamma, \theta$ the angles which OP makes with the co-ordinate planes and the plane OMN , then will

$$\operatorname{cosec}^2 \theta = \operatorname{cosec}^2 \alpha + \operatorname{cosec}^2 \beta + \operatorname{cosec}^2 \gamma.$$

33. Apply the equation to a plane

$$x \cos \alpha + y \cos \beta + z \cos \gamma = \delta$$

to prove the following theorem; a triangle is projected on each of three rectangular planes; shew that the sum of the pyramids which have these projections for bases and a common vertex in the plane of the triangle is equal to the pyramid which has the triangle for base and the origin for vertex.

34. Find the equations to the straight line joining the points (a, b, c) and (a', b', c') ; and shew that it will pass through the origin if $aa' + bb' + cc' = \rho\rho'$, where ρ and ρ' are the distances of the points respectively from the origin.

35. Express the equations to the line

$$a_1x + b_1y + c_1z = a_2x + b_2y + c_2z = a_3x + b_3y + c_3z$$

in the form

$$\frac{x}{l} = \frac{y}{m} = \frac{z}{n}.$$

36. Shew that the equations

$$\frac{x^3 + 1}{x + 1} = \frac{y^3 + 1}{y + 1} = \frac{z^3 + 1}{z + 1}$$

represent four straight lines, and that the angle between any two of them $= \cos^{-1}\left(\frac{1}{3}\right)$.

37. The equations to two planes are

$$lx + my + nz = p, \quad l'x + m'y + n'z = p',$$

where

$$l^2 + m^2 + n^2 = 1, \quad l'^2 + m'^2 + n'^2 = 1;$$

find the lengths of the perpendiculars from the origin upon the two planes which pass through their line of intersection and bisect the angles between them.

38. Find the equation to a plane parallel to two given straight lines; hence determine the shortest distance between two given straight lines.

39. Find the equation to a plane which passes through two given points and is perpendicular to a given plane.

40. There are n planes of which no two are parallel to each other, no three are parallel to the same right line, and no four pass through the same point; prove that the number of lines of intersection of the planes is $\frac{n}{2}(n-1)$, and that the number of points of intersection of those lines is

$$\frac{n(n-1)(n-2)}{1 \cdot 2 \cdot 3}.$$

41. Find the shortest distance between the point (α, β, γ) and the plane

$$Ax + By + Cz = D.$$

42. Find the equation to the plane which passes through the origin and makes equal angles with three given straight lines which pass through the origin.

43. Determine the co-ordinates of the point which divides in a given ratio the distance between two points.

Hence shew that the equation

$$Ax + By + Cz = D$$

must represent a *plane*, according to Euclid's definition of a plane.

44. Three planes meet in a point, and through the line of intersection of each pair a plane is drawn perpendicular to the third; prove that in general the planes thus drawn pass through the same line.

45. The equations to a line are

$$\frac{\alpha - cy + bz}{a} = \frac{\beta - az + cx}{b} = \frac{\gamma - bx + ay}{c};$$

express them in the ordinary symmetrical form.

46. Find the condition that must subsist in order that the equations

$$a + mz - ny = 0, \quad b + nx - lz = 0, \quad c + ly - mx = 0$$

may represent a straight line; and supposing this condition to be satisfied put the equations in the ordinary symmetrical form.

47. Supposing the equations in the preceding question to represent a straight line, find in a symmetrical form the equations to the line from the origin perpendicular to the given line; also determine the co-ordinates of the point of intersection.

48. The locus of the middle points of all straight lines parallel to a fixed plane and terminated by two fixed right lines which do not intersect is a straight line.

49. The equation to a plane is $lx + my + nz = 0$; find the equations to a line lying in this plane and bisecting the angle formed by the intersections of the given plane with the co-ordinate planes of (z, x) and (z, y) .

50. A straight line, whose equations are given, intersects the co-ordinate planes in three points; find the angles included between the lines which join these points with the origin; and if these angles (α, β, γ) be given, shew that the equation to the surface traced out by the line in all positions is

$$x \sqrt{(\tan \alpha)} + y \sqrt{(\tan \beta)} + z \sqrt{(\tan \gamma)} = 0.$$

II. *Surfaces of the second order.*

51. If the normal n at any point of an ellipsoid terminated in the plane of (x, y) make angles α, β, γ with the semi-axes a, b, c , and p be the perpendicular from the centre on the tangent plane, then

$$n \cdot p = c^2, \quad \text{and} \quad p^2 = a^2 \cos^2 \alpha + b^2 \cos^2 \beta + c^2 \cos^2 \gamma.$$

52. Find a point on an ellipsoid such that the tangent plane cuts off equal intercepts from the axes. Also find a point such that the intercepts are proportional to the axes.

53. If a, b, c be the semi-axes of an ellipsoid taken in order, and e, e' the excentricities of the principal sections containing the mean axis, shew that the perpendiculars from the centre on the tangent planes at every point of the section of the surface made by the plane $abe'z = c^2 ex$ are equal.

54. From a given point O , a line OP is drawn meeting a given plane in Q , and the rectangle $OP \cdot OQ$ is invariable; find the locus of P .

55. Sections of an ellipsoid are made by planes which all contain the least axis; find the locus of the foci of the sections.

56. Find the locus of a point which is equidistant from every point of the circle determined by the equations

$$x^2 + y^2 + z^2 = a^2, \quad lx + my + nz = p.$$

57. Shew that the section of the surface $z^2 = xy$ by the plane $z = x + y + c$ is a circle.

58. Interpret the equation

$$x^2 + y^2 + z^2 = (lx + my + nz)^2.$$

59. A, B, C are three fixed points, and P a point in space such that $PA^2 + PB^2 = PC^2$; find the locus of P , and explain the result when ACB is a right or obtuse angle.

60. Shew that the equation $\frac{x^2}{a^2} + \frac{y^2}{b^2} + \frac{z^2}{c^2} = 1$, where a, b, c are in order of magnitude, may be written thus,

$$k^2(x^2 + y^2 + z^2 - b^2) - x^2 + m^2z^2 = 0,$$

where k and m are certain constants. Hence shew that two circular sections of an ellipsoid can be obtained by cutting it by planes passing through its mean axis.

61. A sphere (C) and a plane are given; shew that if any sphere (C') be described touching the plane at a given point and cutting C , the plane of section always contains a given right line. Shew also that if the point of contact be not given, and if the plane of section always contain a given point, the centre of the sphere C' will always be upon a given paraboloid.

62. If A, B, C be extremities of the axes of an ellipsoid, and AC, BC be the principal sections containing the least axis, find the equations to the two cones whose vertices are A, B , and bases BC, AC respectively; shew that the cones have a common tangent plane, and a common parabolic section, the plane of the parabola and the tangent plane intersecting the ellipsoid in ellipses, the area of one of which is double that of the other; and if l be the latus rectum of the parabola, l_1, l_2 of the sections AC, BC , prove that

$$\frac{1}{l^2} = \frac{1}{l_1^2} + \frac{1}{l_2^2}.$$

63. Tangent planes are drawn to an ellipsoid from a given external point; find the equation to the cone which has its vertex at the origin and passes through all the points of contact of the tangent planes with the ellipsoid.

64. If tangent planes be drawn to an ellipsoid from any point in a plane parallel to that of (x, y) , the curve which contains all the points of contact will lie in a plane which always cuts the axis of z in the same point.

65. Shew that the tangent plane to an ellipsoid is expressed by the equation

$$lx + my + nz = \sqrt{(l^2a^2 + m^2b^2 + n^2c^2)}.$$

66. Form the equation to the plane which passes through a given point of an ellipsoid, through the normal at that point, and through the centre of the ellipsoid.

67. A line passing through a given point moves so that the projection of any portion of it on a given line bears a constant ratio to the length of that portion; find the equation to the surface which it traces out.

68. Find the length of the perpendicular from a given point on a given straight line in space.

Investigate the equation to a right cone, having the axis, vertex, and vertical angle given; and determine the condition under which the section made by a plane parallel to one of the co-ordinate planes will be an ellipse.

69. Determine the radii of the spheres which touch the co-ordinate planes and the plane $x + y + z = h$.

70. An ellipsoid is intersected in the same curve by a variable sphere, and a variable cylinder; the cylinder is always parallel to the least axis of the ellipsoid, and the centre of the sphere is always at the focus of a principal section containing this axis. Prove that the axis of the cylinder is invariable in position, and that the area of its transverse section varies as the surface of the sphere.

71. Three edges of a tetrahedron, in length a , b , and c , are mutually at right angles; prove that if these three edges be taken as axes, the equation to the cone which has the origin for vertex, and for its base the circle circumscribed about the opposite face, is

$$\left(\frac{b}{c} + \frac{c}{b}\right)yz + \left(\frac{c}{a} + \frac{a}{c}\right)zx + \left(\frac{a}{b} + \frac{b}{a}\right)xy = 0,$$

and that the plane $ax + by + cz = 0$ is parallel to the sub-contra-ry sections of the cone.

Find the corresponding equations when either of the other angular points of the tetrahedron is taken as vertex.

72. Tangent planes to the surface whose equation is

$$\frac{x^2}{a^2} + \frac{y^2}{b^2} + \frac{z^2}{c^2} = 1$$

pass through a point P ; prove that a sphere can be described through the curve of contact provided P be on a certain right line passing through the origin.

73. A sphere touches each of two right lines which are inclined to each other at a right angle but do not meet; shew that the locus of its centre is an hyperbolic paraboloid.

74. Shew that by properly choosing the rectangular axes any two lines may be represented by the equations

$$\left. \begin{array}{l} y = mx \\ z = c \end{array} \right\}, \quad \left. \begin{array}{l} y = -mx \\ z = -c \end{array} \right\}.$$

Determine the locus of a point which moves so as always to be equally distant from two given straight lines.

75. A tangent plane to an ellipsoid includes between itself and the co-ordinate planes a constant volume; find the locus of the points of contact.

76. A tangent plane to an ellipsoid passes through a fixed point in one of the axes produced; find the point of contact when the volume between this plane and the co-ordinate planes is a minimum.

77. Prove that the locus of a point whose distance from a fixed point is always in a given ratio to its distance from a fixed line is a surface of revolution of the second degree.

78. Two systems of rectangular axes have the same origin; if a plane, or an ellipsoid whose centre is the origin, cut them at distances a, b, c , or a', b', c' , respectively, then

$$\frac{1}{a^2} + \frac{1}{b^2} + \frac{1}{c^2} = \frac{1}{a'^2} + \frac{1}{b'^2} + \frac{1}{c'^2}.$$

79. If a moveable line make with any number of fixed lines the angles $\theta_1, \theta_2, \theta_3, \dots$ so that

$$a_1 \cos \theta_1 + a_2 \cos \theta_2 + a_3 \cos \theta_3 + \dots = \text{a constant,}$$

the lines all passing through a fixed point, and a_1, a_2, a_3, \dots being constants; shew that the moveable line will always lie on the surface of a right cone.

80. Two prolate spheroids have a common focus. If their surfaces meet, the points of intersection will lie in a plane which passes through the line common to the directrix planes.

81. A cone passes through the principal section (b, c) of an ellipsoid; shew that the other section is a curve in a plane perpendicular to that of (b, c) if the vertex of the cone be any point of the surface

$$\frac{z^2}{c^2} + \frac{y^2}{b^2} - \frac{x^2}{a^2} = 1.$$

82. An ellipsoid is cut by a plane parallel to one of its principal planes; shew that all normals to the ellipsoid at points in the curve of section pass through two straight lines situated in the other principal planes.

83. An ellipsoid is constantly touched in two points by a sphere of given radius whose centre moves in one of its principal planes; find the locus of the centre of the sphere, and shew that it will describe a portion of an equilateral hyperbola, if the plane in which it moves be that which contains the greatest and the least axes, and if the foci of the other principal sections be equidistant from the centre of the ellipsoid.

84. An elliptic cylinder is cut by a plane passing through the straight line which touches the base at the extremity of its axis minor; shew that, if the sine of the inclination of the cutting plane to the base do not exceed the excentricity of the base, the locus of the foci of the section will be a circle.

85. Find the curves of intersection of the surface

$$xy + yz + zx = a^2$$

with planes parallel to $x + y + z = 0$.

86. If a sphere be placed in a paraboloid of revolution, shew that the section of the paraboloid made by any plane drawn touching the sphere is a conic section having the point of contact for a focus.

87. Shew that any plane parallel to the planes of (x, z) or (y, z) will meet the surface whose equation is $xy = az$ in a straight line; if a plane be made to pass through that line and touch the surface will the plane touch the surface in every point of the line?

88. Through any point of the curve of intersection of the surfaces

$$\frac{x^2}{a^2} + \frac{y^2}{b^2} - \frac{z^2}{c^2} = 1, \quad x^2 + y^2 + z^2 = a^2 + b^2 - c^2,$$

two straight lines can be drawn on the former surface at right angles to one another.

89. Prove that the plane $z = mx + ny$ will cut the surface

$$\frac{x^2}{a^2} + \frac{y^2}{b^2} = \frac{z^2}{c^2}$$

in two straight lines which are at right angles to one another if

$$\frac{1}{b^2} + \frac{1}{a^2} + m^2 \left(\frac{1}{b^2} - \frac{1}{c^2} \right) + n^2 \left(\frac{1}{a^2} - \frac{1}{c^2} \right) = 0.$$

90. Shew that an infinite number of straight lines may be drawn lying on the surface whose equation is

$$\frac{x^2}{a^2} - \frac{y^2}{b^2} = \frac{4z}{c}.$$

If two such lines be drawn through a point in the plane of (x, z) whose co-ordinates are (x', z') the angle between them is

$$\cos^{-1} \frac{a^2 - b^2 + cz'}{a^2 + b^2 + cz'}.$$

91. Prove that the points on the surface $\frac{x^2}{a^2} - \frac{y^2}{b^2} = \frac{4z}{c}$, the straight lines through which coincident with the surface are at right angles to each other, lie in a plane parallel to the plane of (x, y) and at a distance from it equal to $\frac{b^2 - a^2}{c}$.

92. Determine the condition necessary in order that the plane $lx + my + nz = 0$ may cut the cone $ayz + bzx + cxy = 0$ in two straight lines at right angles to each other; and shew that in that case the straight line through the origin perpendicular to the plane will also lie on the cone.

93. Find the relations between the coefficients of the equation

$$ax^2 + by^2 + cz^2 + 2a'yz + 2b'xz + 2c'yx + 2a''x + 2b''y + 2c''z = f,$$

that it may represent a surface of revolution.

$$\text{If } \frac{b'c'}{a'} - a = 0, \quad \frac{c'a'}{b'} - b = 0, \quad \frac{a'b'}{c'} - c = 0,$$

what is the nature of the surface?

94. Determine the conditions that the equation

$$ax^2 + by^2 + cz^2 + 2a'yz + 2b'zx + 2c'xy = 0$$

may represent a right circular cone; obtaining them in the form

$$\frac{a'b'}{c'} + \frac{a'^2 - b'^2}{a - b} = 0, \quad \frac{c'a'}{b'} + \frac{c'^2 - a'^2}{c - a} = 0.$$

95. Find the relations between the coefficients of the equation

$$ax^2 + by^2 + cz^2 + 2b'xz + 2c'yx + 2a''x + 2b''y + 2c''z = f,$$

that it may represent a surface of revolution.

96. Find the locus of the vertices of all right cones which have the same given ellipse as base.

97. Find the axes of the section of the ellipsoid

$$\frac{x^2}{a^2} + \frac{y^2}{b^2} + \frac{z^2}{c^2} = 1$$

made by the plane $lx + my + nz = 0$.

98. The semiaxes of an ellipsoid are a, b, c ; if planes are drawn through the centre to cut it in sections which have the constant area $\frac{\pi abc}{f}$, shew that the normals to these planes will all lie upon the cone

$$x^2(a^2 - f^2) + y^2(b^2 - f^2) + z^2(c^2 - f^2) = 0.$$

99. On every central radius vector of the ellipsoid

$$\frac{x^2}{a^2} + \frac{y^2}{b^2} + \frac{z^2}{c^2} = 1,$$

whose centre is C is taken a point P such that $\pi k CP$ is the area of the section of the ellipsoid made by the plane through C perpendicular to CP , where k is a line of constant length; shew that the equation to the locus of P is

$$a^2 x^2 + b^2 y^2 + c^2 z^2 = \frac{a^2 b^2 c^2}{k^2}.$$

100. The sum of the squares of the reciprocals of the areas of the sections of an ellipsoid made by any three diametral planes at right angles to each other is constant.

101. An ellipsoid and hyperboloid are concentric and their principal sections are confocal; if a tangent plane be drawn to the asymptotic cone of the hyperboloid, the section of the ellipsoid will be of constant area.

102. A sphere and an ellipsoid which intersect are described about the same point as centre; prove that the product of the areas of the greatest and least sections of the ellipsoid, made by planes passing through the centre and any point of the line of intersection of the two surfaces will be constant.

103. Find the area of the section of the ellipsoid

$$\frac{x^2}{a^2} + \frac{y^2}{b^2} + \frac{z^2}{c^2} = 1,$$

made by the plane $lx + my + nz = \delta$.

104. Shew that the sections of a surface of the second order made by parallel planes are similar curves. Having given the area of the section of an ellipsoid by the plane $lx + my + nz = 0$, find the area of the section made by the plane $lx + my + nz = \delta$.

105. If S be the area of a section of an ellipsoid made by a plane at the distance h from the centre, S' that of the parallel section through the centre, and p the perpendicular from the centre on the parallel tangent plane, shew that

$$S = S' \left(1 - \frac{h^2}{p^2} \right).$$

106. Tangent planes are drawn to an ellipsoid from a given point; shew that an ellipsoid similar to the given ellipsoid and similarly situated can be made to pass through the given point, the points of contact, and the centre of the given ellipsoid.

107. Normals are drawn to the ellipsoid

$$\frac{x^2}{a^2} + \frac{y^2}{b^2} + \frac{z^2}{c^2} = 1$$

at the points where it is intersected by the plane $z = h$. Shew that the locus of the intersection of these normals with the plane of (x, y) is the ellipse

$$\frac{x^2 a^2}{(a^2 - c^2)^2} + \frac{y^2 b^2}{(b^2 - c^2)^2} = 1 - \frac{h^2}{c^2}.$$

108. All the normals to the ellipsoid in Ex. 107 meet the plane of (x, y) within an ellipse whose equation is

$$\frac{a^2 x^2}{(a^2 - c^2)^2} + \frac{b^2 y^2}{(b^2 - c^2)^2} = 1.$$

Determine what is represented by the following equations, from 109 to 116 inclusive.

109. $5y^2 - 2x^2 - z^2 + 4xy - 6yz + 8xz - 1 = 0.$

110. $2y^2 - 5x^2 + 2z^2 + 10xy + 4yz + 4y + 16z + 18 = 0.$

111. $4y^2 - 9x^2 + 2xy + 36x - 8y - 4z - 32 = 0.$

112. $y^2 - 4xy + 4x^2 - 6x + 3z = 0.$

113. $x^2 - y^2 + z^2 - 4xy + 6xz - 2yz = f.$

114. $(ay - bx)^2 + (cx - az)^2 + (bz - cy)^2 = f.$

115. $xy + xz + yz - 2x + 6y - 8z = f.$

116. $xy + yz + xz = a^2.$

117. Find the centre of the surface

$$(ay + \beta x - cy)^2 = \alpha\beta (xy - z^2).$$

118. Find the centre of the surface

$$x^2 + y^2 + z^2 + 4xy - 2xz - 4yz + 2x + 4y - 2z = 0.$$

119. Find the centre of the surface

$$x^2 + 2y^2 + 3z^2 + 2(xy + yz + xz) + x + y + z = 1.$$

120. Shew that the equation $yz + zx + xy = a^2$ may be reduced to

$$2x^2 - (y^2 + z^2) = 2a^2$$

by transforming the axes.

121. Shew that the equation

$$x^2 + y^2 + z^2 + xy + yz + zx = a^2$$

represents an oblate spheroid whose polar axis is to its equatorial in the ratio of 1 to 2, and the equations to whose axis are $x = y = z$.

122. What is represented by the following equation?

$$x^2 + y^2 + z^2 + k(xy + yz + zx) = f.$$

123. If two concentric surfaces of the second order have the same foci for their principal sections they will cut one another everywhere at right angles.

124. Find the locus of the intersection of three planes at right angles to each other, each of which touches one of the following three ellipsoids,

$$\frac{x^2}{a^2} + \frac{y^2}{b^2} + \frac{z^2}{c^2} = 1, \quad \frac{x^2}{a^2 + h^2} + \frac{y^2}{b^2 + h^2} + \frac{z^2}{c^2 + h^2} = 1,$$

$$\frac{x^2}{a^2 + k^2} + \frac{y^2}{b^2 + k^2} + \frac{z^2}{c^2 + k^2} = 1.$$

125. Determine the position of the circular sections of an hyperboloid of two sheets, and shew that the same plane will cut the asymptotic cone in a circle.

126. If $x_1, y_1, z_1; x_2, y_2, z_2; x_3, y_3, z_3$ be the co-ordinates of the extremities of a set of conjugate diameters of an ellipsoid, shew that

$$x_1^2 + x_2^2 + x_3^2 = a^2, \quad y_1^2 + y_2^2 + y_3^2 = b^2, \quad z_1^2 + z_2^2 + z_3^2 = c^2,$$

$$x_1y_1 + x_2y_2 + x_3y_3 = 0, \quad x_1z_1 + x_2z_2 + x_3z_3 = 0, \quad y_1z_1 + y_2z_2 + y_3z_3 = 0.$$

127. If spheres be described on three semi-conjugate diameters of an ellipsoid as diameters, the locus of their intersection is the surface determined by

$$a^2x^2 + b^2y^2 + c^2z^2 = 3(x^2 + y^2 + z^2)^2.$$

128. A plane is drawn through the extremities of three semi-conjugate diameters of an ellipsoid; find the locus of the intersection of this plane with the perpendicular on it from the centre.

129. Tangent planes at the extremities of three conjugate diameters of an ellipsoid intersect in the ellipsoid whose equation is

$$\frac{x^2}{a^2} + \frac{y^2}{b^2} + \frac{z^2}{c^2} = 3.$$

130. A prolate spheroid is cut by any plane through one of its foci; prove that the focus is a focus of the section.

131. Shew that the locus of the diameters of the ellipsoid

$$\frac{x^2}{a^2} + \frac{y^2}{b^2} + \frac{z^2}{c^2} = 1,$$

which are parallel to the chords bisected by tangent planes to the cone

$$\frac{x^2}{a^2} + \frac{y^2}{\beta^2} - \frac{z^2}{\gamma^2} = 0, \text{ is the cone } \frac{\alpha^2 x^2}{a^4} + \frac{\beta^2 y^2}{b^4} - \frac{\gamma^2 z^2}{c^4} = 0.$$

132. If three straight lines at right angles to each other touch the ellipsoid

$$\frac{x^2}{a^2} + \frac{y^2}{b^2} + \frac{z^2}{c^2} = 1,$$

and intersect each other in the point (x', y', z') shew that

$$x'^2 (b^2 + c^2) + y'^2 (c^2 + a^2) + z'^2 (a^2 + b^2) = b^2 c^2 + c^2 a^2 + a^2 b^2.$$

133. Find the greatest angle between the normal at any point of an ellipsoid, and the central radius vector at that point.

134. If four similar and similarly situated surfaces of the second order intersect each other, the planes of their intersections two and two all pass through one point.

135. If three chords be drawn mutually at right angles through a fixed point within a surface of the second order whose equation is $u = 0$, shew that $\Sigma \frac{1}{R \cdot r}$ will be constant where R and r are the two portions into which any one of the chords drawn through the fixed point is divided by that point.

Prove also that the same will be true if instead of the fixed point there be substituted any point on the surface whose equation is $u = c$.

136. Let $\frac{x}{l} = \frac{y}{m} = \frac{z}{n}$ be the equations to a straight line; find the equation to a surface every point of which is at the same distance from this line as from the point (α, β, γ) ; and shew that the plane $lx + my + nz = \delta$ cuts the surface in a straight line.

137. A and B are two similar and concentric ellipsoids, the homologous axes being in the same straight line; C is a third ellipsoid similar to either of the former, its centre being on the surface of B , and axes parallel to those of A or B ; shew that the plane of intersection of A and C is parallel to the tangent plane to B at the centre of C .

138. If a parallelepiped be inscribed in an ellipsoid its edges will be parallel to a system of conjugate diameters.

139. The edges of a parallelepiped are $2a, 2b, 2c$; shew that an ellipsoid concentric with it and whose semidiameters parallel to the edges are $a\sqrt{2}, b\sqrt{2}, c\sqrt{2}$, intersects the faces in ellipses which touch each other and the edges.

140. Two similar and similarly situated ellipsoids are cut by a series of ellipsoids similar and similarly situated to the two given ones, so that the planes of intersection of any one of the series with each of the given ellipsoids make a right angle with one another. Shew that the centres of the series of ellipsoids lie on another ellipsoid.

141. If pyramids be formed between three conjugate diametral planes of an ellipsoid and a tangent plane, so that the products of the intercepted portions of the three conjugate diameters may be the least possible, the volumes of all these pyramids will be equal.

142. If from any point in an ellipsoid three straight lines are drawn mutually at right angles, prove that the plane which passes through their intersections with the surface passes through a point which is fixed so long as the original point is fixed. And shew that if the position of the original point on the surface is changed the locus of the point is an ellipsoid whose semiaxes are

$$\frac{a^2 - 2k^2}{a}, \quad \frac{b^2 - 2k^2}{b}, \quad \frac{c^2 - 2k^2}{c},$$

where

$$\frac{1}{k^2} = \frac{1}{a^2} + \frac{1}{b^2} + \frac{1}{c^2}.$$

143. If two right circular cones whose axes are parallel intersect, the projection of their curve of intersection on the plane passing through the axes is a parabola.

144. An ellipsoid is cut by a plane the distance of which from the centre bears a constant ratio to its distance from the parallel tangent plane; shew that the volume of the cone whose base is the section and vertex the centre of the ellipsoid is invariable.

145. Shew that by properly choosing oblique axes the equation to an ellipsoid may be put in the form

$$x^2 + y^2 + z^2 = a'^2;$$

shew that an infinite number of systems of suitable axes can be found.

146. Determine whether the equation to an hyperboloid of one sheet can always be put in the form

$$x^2 + y^2 - z^2 = a'^2,$$

by properly choosing oblique axes.

147. A straight line revolving round an axis which it does not meet generates an hyperboloid.

148. Prove that the equations to the principal axes of the surface

$$ax^2 + by^2 + cz^2 + 2a'yz + 2b'xz + 2c'xy = 1$$

are

$$x \{a'(\mu + a) - b'c'\} = y \{b'(\mu + b) - c'a'\} = z \{c'(\mu + c) - a'b'\};$$

μ being determined by the equation

$$\begin{aligned} (\mu + a)(\mu + b)(\mu + c) - a'^2(\mu + a) - b'^2(\mu + b) \\ - c'^2(\mu + c) + 2a'b'c' = 0. \end{aligned}$$

149. In an ellipsoid the sum of the lengths of three conjugate diameters is greatest when the diameters are equal,

150. A surface of the second order circumscribes a tetrahedron and each face is parallel to the tangent plane at the opposite angular point; shew that the equation to the surface, taking as oblique axes the three edges of the tetrahedron which meet in one of its angular points, is

$$\frac{x^2 - ax}{a^2} + \frac{y^2 - by}{b^2} + \frac{z^2 - cz}{c^2} + \frac{1}{abc} \{ayz + bzx + cxy\} = 0.$$

151. Shew that the centre of the surface in the preceding question coincides with the centre of gravity of the tetrahedron.

152. If two hyperboloids of one sheet have their corresponding axes equal and parallel, shew that they intersect in a plane curve, the plane of which is parallel to the diametral planes conjugate to the line joining their centres; and find where it cuts this line.

153. Shew that any plane which contains two parallel generating lines of an hyperboloid of one sheet passes through the centre of the surface.

154. The points on an ellipsoid, the normals at which intersect the normal at a fixed point, lie on a cone of the second order whose vertex is the fixed point.

155. Normals are drawn to an hyperboloid of one sheet at points lying along a generating line; shew that these normals are all parallel to a fixed plane.

156. If one of the co-ordinates of an ellipsoid be produced so that the part produced equals the sum of the other two, its extremity will trace out a concentric ellipsoid whose volume is equal to that of the original ellipsoid.

157. Investigate the conditions necessary in order that the equation

$$ax^2 + by^2 + cz^2 + 2a'yz + 2b'zx + 2c'xy = 0$$

may represent two planes.

158. The equation to a surface of the second order is

$$ax^2 + by^2 + cz^2 + 2a'yz + 2b'zx + 2c'xy \\ + 2a''x + 2b''y + 2c''z + f = 0;$$

shew that the diametral planes will be parallel to a given line if

$$aa'' + bb'' + cc'' - abc - 2a'b'c' = 0,$$

and to a given plane if

$$a'' - bc = 0, \quad b'' - ac = 0, \quad c'' - ab = 0.$$

159. Find the line in which the two surfaces intersect whose equations are

$$x^2 \cos 2\theta_1 + y^2 \cos 2\theta_2 + z^2 \cos 2\theta_3 + 2xy \cos (\theta_1 + \theta_2) \\ + 2zx \cos (\theta_1 + \theta_3) + 2zy \cos (\theta_2 + \theta_3) = 0,$$

$$x^2 \sin 2\theta_1 + y^2 \sin 2\theta_2 + z^2 \sin 2\theta_3 + 2xy \sin (\theta_1 + \theta_2) \\ + 2zx \sin (\theta_1 + \theta_3) + 2zy \sin (\theta_2 + \theta_3) = 0).$$

160. Shew that the cones determined by

$$\frac{x(yb + zc - xa)}{A} = \frac{y(zc + xa - yb)}{B},$$

and

$$\frac{y(zc + xa - yb)}{B} = \frac{z(xa + yb - zc)}{C},$$

intersect in the line determined by

$$\frac{x}{A(Bb + Cc - Aa)} = \frac{y}{B(Cc + Aa - Bb)} = \frac{z}{C(Aa + Bb - Cc)};$$

and find the other lines in which they intersect.

161. Find the eccentricity of any section of a paraboloid of revolution in terms of the angle of inclination of the cutting plane to the axis.

162. If through any fixed point chords be drawn to an ellipsoid, the intersection of pairs of tangent planes at their extremities all lie in one plane.

163. Let S be a fixed point, and EF , LM two fixed straight lines; take a point P such that if PQ be drawn perpendicular to EF to meet LM in Q , then PQ may bear an invariable ratio to SP ; shew that the locus of P will be a surface of the second order. Shew also that when SP , PQ are unequal, a section of the surface by a plane perpendicular to EF is a circle, and that when SP , PQ are equal the surface has in general no centre.

164. The equation $\frac{x^2 + y^2}{a^2} + \frac{z^2}{c^2} = 1$, by varying c , represents a series of spheroidal surfaces. If normals be drawn to the spheroids from a fixed point in the axis of z , their intersections with the surfaces will lie on the surface of a given sphere.

165. An ellipsoid and hyperboloid of two sheets have the same principal diameters, both in magnitude and position. Let any tangent plane be drawn to the ellipsoid at a point P ; this will intersect in general the hyperboloid in a plane curve, through which if there be drawn any three tangent planes to the latter surface they will meet in a point P' which lies on the ellipsoid. Also if P' be the point of contact of a second tangent plane to the ellipsoid, P will be the intersection of a second set of tangent planes to the hyperboloid, drawn as before.

166. The surface of an ellipsoid is represented by the equations

$$x = a \cos \alpha, \quad y = b \cos \beta, \quad z = c \cos \gamma;$$

shew that the three lines whose direction angles are $(\alpha, \beta, \gamma, \&c.)$ corresponding to any system of conjugate diameters are perpendicular to each other.

If CP_1 , CP_2 , CP_3 be drawn perpendicular to three conjugate tangent planes

$$\frac{1}{CP_1^2} + \frac{1}{CP_2^2} + \frac{1}{CP_3^2} = \frac{1}{a^2} + \frac{1}{b^2} + \frac{1}{c^2};$$

and if they cut the ellipsoid in points Q_1 , Q_2 , Q_3 , respectively,

$$\frac{1}{CP_1^2 CQ_1^2} + \frac{1}{CP_2^2 CQ_2^2} + \frac{1}{CP_3^2 CQ_3^2} = \frac{1}{a^4} + \frac{1}{b^4} + \frac{1}{c^4}.$$

167. A plane is drawn according to a certain assigned law cutting an ellipsoid; find the locus of the vertex of the cone which touches the ellipsoid in the curve of intersection.

If a, b, c be the semi-axes of the ellipsoid $\frac{x}{a} + \frac{y}{\beta} + \frac{z}{\gamma} = 1$, the equation to the cutting plane, α, β, γ , being connected by the relation $\frac{a^4}{\alpha^2} + \frac{b^4}{\beta^2} + \frac{c^4}{\gamma^2} = \text{constant}$, the locus is a sphere.

168. Shew that the tangent lines to an ellipsoid from an external point touch it in a plane curve, and find the equations to the curve.

If the external point lies on a fixed plane, shew that the plane of contact passes through a fixed point; determine its co-ordinates.

If the external point lies on a fixed line, the plane of contact contains a fixed line; determine its equation.

169. If lines be drawn from any point of the surface $\frac{x^2}{a^4} + \frac{y^2}{b^4} + \frac{z^2}{c^4} - \frac{1}{k^2} = 0$, to touch the surface $\frac{x^2}{a^2} + \frac{y^2}{b^2} + \frac{z^2}{c^2} - 1 = 0$; shew that the planes in which the curves of contact lie all touch the sphere $x^2 + y^2 + z^2 = k^2$.

170. Shew that the right circular cylinders described about the ellipsoid

$$\frac{x^2}{a^2} + \frac{y^2}{b^2} + \frac{z^2}{c^2} = 1,$$

$2b$ being the mean axis, are represented by the equation

$$(b^2 - c^2)x^2 - (c^2 - a^2)y^2 + (a^2 - b^2)z^2 \\ \pm 2\sqrt{(a^2 - b^2)}\sqrt{(b^2 - c^2)}xz = (a^2 - c^2)b^2.$$

171. Three cylinders circumscribe a given ellipsoid; the axes of the cylinders are mutually at right angles; shew that the sum of the squares of the areas of sections of the cylinders by planes respectively perpendicular to their axes is constant.

172. If lines be drawn from the centre of an ellipsoid (whose semiaxes are a, b, c) parallel to the generating lines of an enveloping cone, the conical surface S so formed will intersect the ellipsoid in two planes parallel to the plane of contact. The locus of the vertex of the enveloping cone which causes one of the planes to coincide with the plane of contact is

$$\frac{x^2}{a^2} + \frac{y^2}{b^2} + \frac{z^2}{c^2} = 2.$$

173. Of all cones which envelope an ellipsoid, have their bases in the tangent plane at a given point P , and are of the same altitude, that is the least which has its vertex in the diameter through P ; and of all which have their vertices in this diameter, that is the least whose axis is twice that diameter.

174. If a globe be placed upon a table the breadth of the elliptic shadow cast by a candle (considered as a luminous point) will be independent of the position of the globe.

175. In the preceding example, if an ellipsoid having its least axis vertical be substituted for the globe, determine the condition of the shadow of the globe being circular. It may be shewn that the locus of the luminous point must be an hyperbola, and that the radius of the circular shadow is independent of the mean axis of the ellipsoid.

176. Of a series of cones enveloping an ellipsoid, the vertices lie on a concentric ellipsoid, similar to the given one and similarly situated. Prove that any two cones of the series intersect one another in two planes.

177. Prove that if, in the preceding example, the vertices are supposed to lie also on a third ellipsoid concentric with the other two and similarly situated, and whose axes are respectively as the squares of theirs, these two planes are at right angles to one another.

178. A cylinder is circumscribed about an ellipsoid, and at the extremities of the diameter parallel to the generating lines of the cylinder tangent planes are drawn: shew that the volume of all cylinders so shut in is constant.

179. The locus of the vertex of a cone which envelopes a given ellipsoid (A) is a straight line passing through the centre of (A); an ellipsoid similar to A and similarly placed has the vertex of the cone for centre and cuts the cone in a curve (B). If the major axis of this ellipsoid vary as the distance of its centre from A 's, prove that the locus of B is an elliptic cylinder.

180. Suppose a cylinder to envelope an ellipsoid, and suppose a tangent plane to be drawn to the ellipsoid at one extremity of the diameter which is parallel to the axis of the cylinder. Let a line be drawn from the centre of the ellipsoid to meet the ellipsoid, the above tangent plane, and the enveloping cylinder; and suppose r, s, t to denote the respective distances of the points of intersection from the centre of the ellipsoid. Shew that

$$\frac{1}{r^2} = \frac{1}{s^2} + \frac{1}{t^2}.$$

181. Suppose a cone to envelope an ellipsoid; let R' be the distance of the vertex from the centre of the ellipsoid, $2R$ the length of the diameter of the ellipsoid which is in the direction of the line joining the centre of the ellipsoid with the vertex of the cone; and suppose a tangent plane to be drawn to the ellipsoid at one extremity of this diameter. Let a line be drawn from the centre of the ellipsoid to meet the ellipsoid, the above tangent plane, and the enveloping cone; and suppose r, s, t to denote the respective distances of the points of intersection from the centre of the ellipsoid. Shew that

$$\left(\frac{1}{Rt} - \frac{1}{R's}\right)^2 = \left(\frac{1}{R^2} - \frac{1}{R'^2}\right)\left(\frac{1}{r^2} - \frac{1}{s^2}\right).$$

182. Let $\phi(x, y, z) = 0$ be the equation to a surface of the second order; if tangent lines be drawn to it from the point (α, β, γ) , shew that the equation to the plane which contains all the points of contact is

$$2u + (x - \alpha) \frac{du}{d\alpha} + (y - \beta) \frac{du}{d\beta} + (z - \gamma) \frac{du}{d\gamma} = 0,$$

where $u = \phi(\alpha, \beta, \gamma)$.

183. Let $\phi(x, y, z) = 0$ be the equation to a surface of the second order; then the equation to the enveloping cone which has its vertex at the point (α, β, γ) is

$$\begin{aligned} & 2u \left\{ (x - \alpha)^2 \frac{d^2u}{d\alpha^2} + (y - \beta)^2 \frac{d^2u}{d\beta^2} + (z - \gamma)^2 \frac{d^2u}{d\gamma^2} \right. \\ & \left. + 2(x - \alpha)(y - \beta) \frac{d^2u}{d\alpha d\beta} + 2(y - \beta)(z - \gamma) \frac{d^2u}{d\beta d\gamma} + 2(z - \gamma)(x - \alpha) \frac{d^2u}{d\gamma d\alpha} \right\} \\ & = \left\{ (x - \alpha) \frac{du}{d\alpha} + (y - \beta) \frac{du}{d\beta} + (z - \gamma) \frac{du}{d\gamma} \right\}^2, \end{aligned}$$

where $u = \phi(\alpha, \beta, \gamma)$.

Ex. Determine the enveloping cone of the surface

$$\frac{x^2}{a^2} + \frac{y^2}{b^2} + \frac{z^2}{c^2} = 1,$$

from the point (a, b, c) as vertex.

184. Let $\phi(x, y, z) = 0$ be the equation to a surface of the second order; then the equation to the enveloping cylinder which has its generating lines parallel to the line $\frac{x}{l} = \frac{y}{m} = \frac{z}{n}$ is

$$\begin{aligned} & 2u \left\{ l^2 \frac{d^2u}{dx^2} + m^2 \frac{d^2u}{dy^2} + n^2 \frac{d^2u}{dz^2} + 2lm \frac{d^2u}{dx dy} + 2mn \frac{d^2u}{dy dz} + 2nl \frac{d^2u}{dz dx} \right\} \\ & = \left(l \frac{du}{dx} + m \frac{du}{dy} + n \frac{du}{dz} \right)^2, \end{aligned}$$

where $u = \phi(x, y, z)$.

Ex. Determine the enveloping cylinder of the surface $\frac{x^2}{a^2} + \frac{y^2}{b^2} + \frac{z^2}{c^2} = 1$, which has its generating lines parallel to the line $\frac{x}{a} = \frac{y}{b} = \frac{z}{c}$.

185. Shew that the surface

$$(ax + by + cz - 1)^2 + 2a'yz + 2b'zx + 2c'xy = 0$$

touches the co-ordinate axes; and find the equation to the cone which has its vertex at the origin and passes through the curve of section of the surface by the plane through the points of contact.

186. Lines are drawn through the origin perpendicular to the tangent planes to the cone

$$ax^2 + by^2 + cz^2 + 2a'yz + 2b'zx + 2c'xy = 0;$$

shew that they will generate the cone which has for its equation

$$(bc - a'^2)x^2 + (ca - b'^2)y^2 + (ab - c'^2)z^2 \\ + 2(b'c' - aa')yz + 2(c'a' - bb')zx + 2(a'b' - cc')xy = 0.$$

Shew also that if lines be drawn through the origin perpendicular to the tangent planes to the second cone they will generate the first cone.

III. *Surfaces in general.*

187. If a sphere pass through the origin of co-ordinates and its centre is on the surface defined by the equation

$$\{3(x^2 + y^2 + z^2) - b^2\}^2 = (x + y + z)^2 (x^2 + y^2 + z^2),$$

the sum of the spherical surfaces cut off by the co-ordinate planes is constant and $= 2\pi b^3$.

188. A straight line drawn from the centre of an ellipsoid meets the ellipsoid in P and the sphere on the diameter $2a$ in Q ; shew that the tangent planes at P and Q contain a constant angle α if the co-ordinates of P satisfy the equation

$$(x^2 + y^2 + z^2) \left(\frac{x^2}{a^4} + \frac{y^2}{b^4} + \frac{z^2}{c^4} \right) = \sec^2 \alpha,$$

189. If a straight line be drawn from the centre of an hyperboloid whose equation is $\frac{x^2}{a^2} + \frac{y^2}{b^2} - \frac{z^2}{c^2} = 1$ to meet the surface in P, P' , and a point Q be taken in CP produced such that $CP^2 = l(QP + QP')$, where l is a constant, shew that the locus of Q is defined by the equation

$$\left(\frac{x^2}{a^2} + \frac{y^2}{b^2} - \frac{z^2}{c^2} \right)^2 = \frac{x^2 + y^2 + z^2}{4l^2}.$$

190. The shadow of a given ellipsoid thrown by a luminous point on the plane which passes through two of the principal axes has its centre on the curve in which the same plane intersects the ellipsoid; shew that the equation to the locus of the luminous point is

$$\frac{x^2}{a^2} + \frac{y^2}{b^2} = \left(\frac{z^2}{c^2} - 1 \right)^2.$$

191. If light fall from a luminous point whose co-ordinates are α, β, γ , on a surface whose equation is $xyz = m^3$, the boundary of light and shade lies on an hyperboloid of one or two sheets according as the product of α, β, γ , is negative or positive.

192. Tangent planes to an ellipsoid are drawn at a given distance from the centre; find the projections on the principal planes of the curve which is the locus of the points of contact. In what case will one of these projections consist of two straight lines?

193. Shew that the surfaces whose equations are

$$(x^2 + y^2)(a^2 - z^2) - c^2 y^2 = 0,$$

$$\text{and } (x - c)^2 + y^2 + z^2 - a^2 = 0,$$

touch one another; and that the projection of the curve of contact on one of the co-ordinate planes is a circle, and on another a parabola.

194. Two circles have a common diameter AB and their planes are inclined to each other at a given angle; on PP' any chord of one of them parallel to AB is described a circle with its plane parallel to that of the other circle; shew that the surface generated by these circles is an ellipsoid the squares of whose axes are in arithmetical progression.

195. Find the equation to the surface generated by straight lines drawn through the origin parallel to normals to the surface $\frac{x^2}{a^2} + \frac{y^2}{b^2} + \frac{z^2}{c^2} = 1$ at points where it is intersected by the surface $\frac{x^2}{a^2 - k^2} + \frac{y^2}{b^2 - k^2} + \frac{z^2}{c^2 - k^2} = 1$; k being greater than c and less than a .

196. An ellipse of given eccentricity moving with its plane parallel to the plane of (y, z) and touching at the extremities of its axes the planes of (x, y) and (x, z) always passes through the curve whose equations are $y = x, cz = x^2$; find the equation to the surface generated, and determine the volume bounded by the surface and two given positions of the generating ellipse.

197. Shew that the surface determined by

$$z = F\left(\frac{ax + by + cz}{a'x + b'y + c'z}\right)$$

is cut by planes parallel to the plane of (x, y) in straight lines.

198. A tangent line to the surface of the ellipsoid

$$\frac{x^2}{a^2} + \frac{y^2}{b^2} + \frac{z^2}{c^2} = 1$$

passes through the axis of z , and a given curve in the plane of (x, y) ; shew how to find the equation to the surface generated by it. Ex. The curve being $\frac{x^2}{a^2} + \frac{y^2}{b^2} = m^2$, shew that the surface consists of two cones of the second order.

199. Find the differential equation to the surface generated by a straight line which passes through two given curves and remains parallel to the plane of (x, y) . Shew that the equation $x = (y - b) \tan \frac{z}{a}$ represents such a surface.

200. Determine the surface generated by a straight line which moves parallel to the plane of (x, y) , and passes through the axis of z and through the curve given by

$$\frac{x^2}{a^2} + \frac{y^2}{b^2} + \frac{z^2}{c^2} = 1, \quad \frac{x}{a} + \frac{y}{b} = 1.$$

201. Determine the surface generated by a straight line which moves parallel to the plane of (x, y) and passes through the following curves (1) and (2):

$$\frac{x^2}{a^2} + \frac{z^2}{c^2} = 1, \quad y = 0 \dots\dots\dots(1),$$

$$\frac{y^2}{b^2} + \frac{z^2}{c^2} = 1, \quad x = 0 \dots\dots\dots(2).$$

202. A surface is generated by a straight line which always passes through the two fixed straight lines

$$y = mx, \quad z = c; \quad \text{and} \quad y = -mx, \quad z = -c;$$

prove that the equation to the surface generated is of the form

$$\frac{mcx - yz}{c^2 - z^2} = f\left(\frac{mzx - cy}{c^2 - z^2}\right).$$

203. If a surface be such that at any point of it a straight line can be drawn lying wholly on the surface and intersecting the axis of z , then at every point of the surface

$$x^2 \frac{d^2z}{dx^2} + 2xy \frac{d^2z}{dx dy} + y^2 \frac{d^2z}{dy^2} = 0.$$

204. The general equation to surfaces generated by a straight line which is always parallel to the plane

$$lx + my + nz = 0,$$

is
$$\left(m + n \frac{dz}{dy}\right)^2 \frac{d^2z}{dx^2} - 2 \left(m + n \frac{dz}{dy}\right) \left(l + n \frac{dz}{dx}\right) \frac{d^2z}{dx dy} + \left(l + n \frac{dz}{dx}\right)^2 \frac{d^2z}{dy^2} = 0.$$

205. Find the equation to the surface generated by a straight line which always passes through each of two given straight lines in space, and also through the circumference of a circle whose plane is parallel to them both, and whose centre bisects the shortest distance between them.

206. A surface is generated by a straight line which always intersects the line $\frac{x-a}{l} = \frac{y-b}{m} = \frac{z-c}{n}$, and is parallel to the plane $\lambda x + \mu y + \nu z = 0$; find the functional equation to the surface; also find the differential equation.

207. Find the general functional equation to surfaces generated by the motion of a straight line which always intersects and is perpendicular to a given straight line.

If a surface whose equation referred to rectangular axes is $ax^2 + by^2 + cz^2 + 2a'yz + 2b'zx + 2c'xy + 2a''x + 2b''y + 2c''z + 1 = 0$ be capable of generation in this manner, shew that

$$a + b + c = 0, \quad aa'^2 + bb'^2 + cc'^2 = 2a'b'c' + abc.$$

208. Shew that $xyz = c(x^2 - y^2)$ represents a conoidal surface.

209. Shew that the condition in order that

$$ax^2 + by^2 + cz^2 + 2a''x + 2b''y + 2c''z = f$$

may represent a conical surface is

$$\frac{a''^2}{a} + \frac{b''^2}{b} + \frac{c''^2}{c} + f = 0.$$

210. Shew that in order that the equation

$ax^2 + by^2 + cz^2 + 2a'yz + 2b'zx + 2c'xy + 2a''x + 2b''y + 2c''z + f = 0$
may represent a cylindrical surface, it is necessary that

$$\frac{a''}{aa' - b'c'} + \frac{b''}{bb' - c'a'} + \frac{c''}{cc' - a'b'} = 0.$$

Is this condition sufficient as well as necessary?

211. Explain the two methods of generating a developable surface; find the differential equation to developable surfaces from each mode of generation.

212. Are the following surfaces developable?

$$(1) \quad xyz = a^3; \quad (2) \quad z - c = \sqrt{(xy)}.$$

213. Find the differential equation to a surface whose tangent plane at any point includes with the three co-ordinate planes a pyramid of constant volume; shew that the surface is generally developable, the only exception being the surface determined by $xyz = a$ constant.

214. Find the equation to the surface in which the tangent plane at (x, y, z) meets the axis of z at a distance from the origin equal to that of (x, y, z) from the origin.

215. Find the equation to the surface in which the tangent plane at (x, y, z) meets the axis of z at a distance $\frac{k^{n+1}}{z^n}$ from the origin. If $n = 1$, give that form to the arbitrary function which will produce the equation to an ellipsoid.

216. A plane passes through $(0, 0, c)$ and touches the circle

$$x^2 + y^2 = a^2, \quad z = 0;$$

determine the locus of the ultimate intersections of the plane.

217. Three points move with given uniform velocities along three rectangular axes from given positions; shew how to find the surface to which the plane passing through their contemporaneous positions is always a tangent.

218. Spheres of constant radius r are described passing through the origin; find the envelope of the planes of contact of tangent cones having a fixed vertex at the point (a, b, c) .

219. Find the locus of the ultimate intersections of a series of planes touching two parabolas which lie in planes perpendicular to each other and have a common vertex and axis.

220. The sphere $x^2 + y^2 + z^2 = 2ax + 2by + 2cz$ is cut by another sphere which passes through the origin and has its centre on the surface

$$\frac{x^2}{a^2} + \frac{y^2}{b^2} + \frac{z^2}{c^2} = 1;$$

shew that the equation to the envelope of the planes of intersection is

$$\frac{1}{ax} + \frac{1}{by} + \frac{1}{cz} = 0.$$

221. From each point of the exterior of two concentric ellipsoids, whose axes are in the same directions, tangent planes are drawn to the surface of the interior ellipsoid; shew that all the planes of contact corresponding to the several points of the exterior surface touch another concentric ellipsoid.

222. From any point P in the surface of an ellipsoid straight lines are drawn so as each to pass through one of three conjugate diameters, and be parallel to the plane containing the other two; these straight lines meet the surface again at P_1, P_2, P_3 ; find the equation to the plane which passes through these points, and the locus of the ultimate intersections of all such planes, the diameters remaining fixed while P moves; and shew that its volume = $\frac{3}{35}$ of that of the ellipsoid.

223. A cone envelopes the ellipsoid

$$\frac{x^2}{a^2} + \frac{y^2}{b^2} + \frac{z^2}{c^2} = 1,$$

and its vertex moves on the similar ellipsoid

$$\frac{(x - \alpha)^2}{a^2} + \frac{(y - \beta)^2}{b^2} + \frac{(z - \gamma)^2}{c^2} = n^2;$$

shew that the plane of contact touches the surface

$$\left(\frac{\alpha x}{a^2} + \frac{\beta y}{b^2} + \frac{\gamma z}{c^2} - 1 \right)^2 = n^2 \left(\frac{x^2}{a^2} + \frac{y^2}{b^2} + \frac{z^2}{c^2} \right).$$

224. A sphere is described having its centre at a point on the surface of an elliptic paraboloid, and its radius equal to the distance of the point from a fixed plane perpendicular to the axis of the paraboloid: determine the envelope of all such spheres.

225. One axis of an ellipsoid is gradually increased while the volume remains constant, and the section containing the other axes similar; find the enveloping surface.

226. Shew that an infinite number of plane centric sections of an hyperboloid of one sheet may be drawn, each possessing the following property, viz. that the normals to the surface at the curve of section all pass through one or other of two straight lines lying in the same plane with the two possible axes.

Shew that these centric planes envelope the asymptotic cone.

227. Shew that the envelope of a sphere of which any one of one series of circular sections of an ellipsoid is a diametral plane, is another ellipsoid touching a sphere described on the mean axis of the former ellipsoid as diameter, in a plane perpendicular to the straight line which passes through the centres of the series of circular sections.

228. Find the envelope of a sphere of constant radius having its centre on a given circle, and determine the section

by a tangent plane to the envelope perpendicular to the plane of the circle.

229. From every point of the surface

$$4z (lx^2 + l'y^2) + ll' (x^2 + y^2) = 0 \dots\dots\dots(1),$$

as vertex enveloping cones are drawn to the paraboloid

$$ll'z - (lx^2 + l'y^2) = 0 \dots\dots\dots(2).$$

Shew that the planes of contact all touch the surface

$$4z (lx^2 + l'y^2) - (l'^2x^2 + l'^2y^2) = 0.$$

Also shew that the surface (1) contains the directrices of all the sections of (2) made by planes through its axis.

IV. *Curves.*

230. A curve is determined by the equations $x + z = a$, and $x^2 + y^2 + z^2 = a^2$; find the points where the tangent makes an angle β with the axis of z .

231. Find the equations to the tangent to the curve

$$\frac{x^2}{a^2} + \frac{y^2}{b^2} - \frac{z^2}{c^2} = 0, \quad \frac{x^2}{a^2} + \frac{y^2}{b^2} + \frac{z^2}{c^2} = 1.$$

232. Find the equations which determine the tangent to the curve

$$y^2 = ax - x^2, \quad z^2 = a^2 - ax.$$

233. Find the equations to the curve traced out on the surface

$$\frac{x^2}{a} + \frac{y^2}{b} = z$$

by the extremities of the latera recta of sections made by planes passing through the axis of z .

234. Having given the equations to a curve in space referred to three rectangular axes, find the length of the perpendicular from the origin upon the tangent at any point.

Ex. $x = a \cos \theta, \quad y = a \sin \theta, \quad z = \frac{a}{2} (e^\theta + e^{-\theta}).$

Shew that if the perpendicular be invariable either the curve or its involute lies on the surface of a sphere.

235. A perpendicular is drawn from the origin on the tangent to a curve at the point (x, y, z) . If x', y', z' are the co-ordinates of the foot of the perpendicular, shew that

$$x' = x - \frac{dx}{ds} \left(x \frac{dx}{ds} + y \frac{dy}{ds} + z \frac{dz}{ds} \right),$$

$$y' = y - \frac{dy}{ds} \left(x \frac{dx}{ds} + y \frac{dy}{ds} + z \frac{dz}{ds} \right),$$

$$z' = z - \frac{dz}{ds} \left(x \frac{dx}{ds} + y \frac{dy}{ds} + z \frac{dz}{ds} \right).$$

236. Shew how to determine the locus of the feet of the perpendiculars from the origin upon the tangent lines to a given curve.

The equations to the curve being $x = a \cos \theta$, $y = a \sin \theta$, $z = c\theta$, shew that the locus is a curve lying on the surface

$$\frac{x^2 + y^2}{c^2} - \frac{z^2}{a^2} = \frac{a^2}{c^2}.$$

237. A curve is traced on a sphere so that its tangent makes always a constant angle with a fixed plane; find its length from cusp to cusp.

238. Find the equation to the normal plane to a curve at any proposed point; if the normal plane always passes through a fixed straight line, shew that the curve is a circle.

239. Find the direction cosines of the straight line in which the normal plane at any point of a curve meets the osculating plane at that point.

240. Find the equation to the osculating plane at any point of the curve

$$x = a \cos t, \quad y = b \sin t, \quad z = ct.$$

241. If (x, y, z) be any point on a curve, shew what plane is represented by the equation

$$(x' - x) \frac{d^2x}{ds^2} + (y' - y) \frac{d^2y}{ds^2} + (z' - z) \frac{d^2z}{ds^2} = 1.$$

242. Find the value of the radius of absolute curvature from the consideration that it is the perpendicular from (x, y, z) on the plane in the preceding example.

243. Find the radius of curvature of the curve

$$\frac{x}{h} + \frac{y}{k} = 1, \quad x^2 + z^2 = a^2,$$

at any point.

244. Determine the radii of absolute and spherical curvature and the co-ordinates of the centres in the case of a helix.

245. Find the radius of absolute curvature at a given point in the curve determined by

$$x = a \cos \theta, \quad y = b \sin \theta, \quad z = c\theta.$$

246. Required the locus from which three given spheres will appear of equal magnitudes.

247. A triangular pyramid upon a given base is such that given lengths being measured along the three edges from the base the remainders of the edges are always equal to one another; shew that the locus of the vertex is a conic section.

248. A point moves on the cone $y^2 + z^2 = m^2 x^2$ so that the tangent to its path is inclined to the axis of the cone at a constant angle β ; shew that the locus of the point is determined by the equation to the cone together with the equation

$$k \log \frac{x}{c} = \sin^{-1} \frac{y}{mx},$$

where $k = \frac{\sqrt{(\tan^2 \beta - m^2)}}{m}$, and c is a constant.

249. Shew that a curve drawn on the surface of a right cone so as to cut the generating lines at a constant angle is a curve of constant inclination to the base of the cone, and that the consecutive distances between the points at which it cuts any one generator are in geometrical progression.

250. From the vertex of a right cone two curves are drawn on the surface cutting all the generating lines at constant angles which are complementary; shew that the sum of the inverse squares of the arcs intercepted between the vertex and a given circular section is independent of the magnitudes of the complementary angles.

251. Find the curves of greatest inclination to the co-ordinate planes on the surface of which the equation is $xyz = a^3$.

252. Find the curves of greatest inclination to the plane of (x, y) on the surface $cz = xy$.

253. Tangent planes are drawn to the surface $cz = xy$ at all points where this surface is intersected by the cylinder $x^2 = ay$; find the equations to the edge of regression of the developable surface formed by the intersection of these tangent planes.

254. Find the angle between the osculating planes at two consecutive points of a curve.

255. The shortest distance between the tangents at two consecutive points of a curve of double curvature is $\frac{\delta\phi (\delta s)^2}{12\rho}$, where δs is the length of the arc between the two points, $\delta\phi$ is the angle between the osculating planes at the two points, and ρ is the radius of absolute curvature.

256. Shew that the edge of the developable surface formed by the locus of the ultimate intersections of normal planes of a curve of double curvature is the locus of the centres of spherical curvature of the curve.

Find the locus of the centres of spherical curvature of a helix.

257. Find the equation to the surface on which are found all the evolutes of the curve $x^2 = az$, $x = y$.

258. Shew that the curve represented by the equations

$$x^2 + y^2 + z^2 = a^2,$$

$$\sqrt{x} + \sqrt{y} + \sqrt{z} = c;$$

is cut perpendicularly by each of the series of surfaces

$$x^{\frac{1}{2}} + (\mu - 1) y^{\frac{1}{2}} = \mu z^{\frac{1}{2}},$$

μ being an arbitrary parameter.

259. A curve is traced on a surface; shew that the radius of absolute curvature at any point of this curve is the same as the radius of curvature of the section of the surface made by the osculating plane of the curve at that point.

260. A curve is traced on a sphere; shew that generally the radius of the sphere is the radius of spherical curvature of the curve; but that this does not hold if the curve be a *plane* curve, or plane for an indefinitely short period at any point.

261. If the normal plane of a curve constantly touches a given sphere the curve is rectifiable.

262. If (x', y', z') be the point in the locus of the centres of curvature corresponding to the point (x, y, z) on a curve, ρ the radius of curvature at (x, y, z) , and s' the arc of the above locus, shew that $\frac{d\rho}{ds'}$ is the cosine of the angle between the tangent at (x', y', z') and the direction of ρ .

263. Find the equation to the surface on which lie all the evolutes to the curve formed by the intersection of the surfaces $y^2 = 4a(x+z)$, $z^2 = 4a(x+y)$; and determine the equations to that evolute which cuts the axis of x at a distance $7a$ from the origin.

V. *Curvature of Surfaces.*

264. Determine the conditions necessary in order that the surfaces whose equations are

$$ax^2 + by^2 + cz^2 + 2a'yz + 2b'zx + 2c'xy + 2z = 0,$$

$$Ax^2 + By^2 + Cz^2 + 2A'yz + 2B'zx + 2C'xy + 2z = 0,$$

may have their principal radii of curvature at the origin equal; and shew that if these conditions be fulfilled any sections of the two surfaces parallel to the plane of (x, y) will be similar.

265. Obtain the quadratic equation for determining the principal radii of curvature at any point of the surface

$$\phi(x) + \chi(y) + \psi(z) = 0;$$

and find the condition that the principal curvatures may be equal and opposite.

266. The locus of the points on the hyperboloid

$$\frac{x^2}{a^2} + \frac{y^2}{b^2} - \frac{z^2}{c^2} = 1,$$

for which the principal curvatures are equal and opposite, has for its projection on the plane of (x, y) the ellipse

$$\frac{x^2}{a^2} (a^2 + c^2) + \frac{y^2}{b^2} (b^2 + c^2) = a^2 + b^2.$$

267. Shew that the principal radii of curvature are equal in magnitude and opposite in sign at every point of the surface determined by

$$z = (y - b) \tan \frac{x}{a}.$$

268. The trace on the plane of (y, z) of the locus of the extremities of the principal radii of curvature of the ellipsoid whose equation is

$$\frac{x^2}{a^2} + \frac{y^2}{b^2} + \frac{z^2}{c^2} = 1$$

is given by the equation

$$\{(by)^{\frac{2}{3}} + (cz)^{\frac{2}{3}} - (b^2 - c^2)^{\frac{2}{3}}\} \left\{ \frac{b^2 y^2}{(a^2 - b^2)^2} + \frac{c^2 z^2}{(a^2 - c^2)^2} - 1 \right\} = 0.$$

269. Among the surfaces included in the equation

$$x \frac{dz}{dx} + y \frac{dz}{dy} = 0,$$

find that in which the principal radii of curvature are equal but of opposite sign.

270. Find the surface of revolution at every point of which the radii of curvature are equal in magnitude and opposite in sign.

271. If a, b be the principal radii of curvature at any point of a surface referred to the tangent plane at that point as the plane of (x, y) and the principal planes as planes of (x, z) and (y, z) , then will the locus of the circles of curvature of all normal sections of the surface at the origin be

$$(x^2 + y^2 + z^2) \left(\frac{x^2}{a} + \frac{y^2}{b} \right) = 2z(x^2 + y^2).$$

272. Find the radius of curvature in any normal section of the surface

$$Ax^2 + By^2 + Cz^2 + 2A'yz + 2B'zx + 2C'xy + Ez = 0,$$

at the origin; and shew that the sum of the reciprocals of the radii of curvature in sections at right angles to each other is constant.

273. Required the sum of the principal radii of curvature at any point of a curved surface in terms of the co-ordinates of that point.

The equation to the surface being $f(x, y, z) = 0$, express the result by partial differential coefficients of $f(x, y, z)$.

274. If $r = f(\theta, \phi)$ be the equation to a surface referred to the tangent plane at the origin as the plane of (x, y) , then

the radius of curvature at the origin of a normal section inclined at any angle ϕ to the plane of (x, z) is

$$= -\frac{1}{2} \text{ limit of } \frac{dr}{d\theta} \text{ when } \theta = \frac{\pi}{2}.$$

Ex. In the surface $xy = az$, shew that $\rho = \frac{a}{\sin 2\phi}$.

275. If the surface $(x-a)^2 + (y-b)^2 = (z-c)^2$ have contact of the second order with the surface $z = f(x, y)$, shew that the relations

$$\frac{p^2 - 1}{r} = \frac{q^2 - 1}{t} = \frac{pq}{s}$$

must be satisfied at the point of contact.

276. At either point at which the surface

$$\left(\frac{x^2}{a^2} - 1\right)^2 + \left(\frac{y^2}{b^2} - 1\right)^2 = \frac{z^2}{c^2} + 1$$

meets the axis of z , an elliptic paraboloid may be found, which has at its vertex a complete contact of the third order with the surface.

277. Find the radius of curvature of a normal section of a spheroid made by a plane inclined to the meridian at any given angle.

278. Shew that the locus of the focus of an ellipse rolling along a straight line is a curve such that if it revolves about that line, the sum of the curvatures of any two normal sections at right angles to one another will be the same for all points of the surface generated.

279. In any surface of the second order the tangents to the lines of curvature at any point are parallel to the axes of any plane section parallel to the tangent plane to the surface at that point.

280. Obtain the differential equation to the projection on one of the co-ordinate planes of the lines of curvature of a

surface. Apply the equation to determine the lines of curvature of a surface of revolution.

281. Determine the lines of curvature on the surface

$$xy = az.$$

282. Find the radius of curvature of any normal section of a surface at a given point.

If $y' - y = m(x' - x)$ be the projection on the plane of (x, y) of the tangent line to the curve of section, shew that the values of m corresponding to the principal sections of the surface $\frac{y}{z} = f\left(\frac{x}{z}\right)$ at the point (x, y, z) are

$$\frac{y}{x} \text{ and } -\frac{x + pz}{y + qz}.$$

283. The links of a chain are circular, being of the form of the surface generated by the revolution of a circle whose radius is one inch about a line in its own plane at a distance of four inches from the centre; apply Euler's formula for the curvature of surfaces to shew that if one link be fixed, the next cannot be twisted through an angle greater than 60° without shortening the chain.

284. An annular surface is generated by the revolution of a circle about an axis in its own plane; shew that one of the principal radii of curvature at any point of the surface varies as the ratio of the distance of this point from the axis to its distance from the cylindrical surface described about the axis and passing through the centre of the circle.

285. If ρ, ρ' be the greatest and least radii of curvature of a curve surface at a given point, ϕ, ψ the angles which the normal to the surface at the given point makes with the axes of x and y , shew that

$$\frac{1}{\rho} + \frac{1}{\rho'} = \frac{d}{dx} \cos \phi + \frac{d}{dy} \cos \psi.$$

286. Define an umbilicus. In what sense do you understand that there is an infinite number of lines of curvature at an umbilicus? And from this consideration deduce the partial differential equations which exist at such points.

287. Shew that in the surface

$$\phi(x) + \chi(y) + \psi(z) = 0,$$

if $\phi''(x) = \chi''(y) = \psi''(z)$ at any point, that point is an umbilicus.

288. Find the umbilici of the surface

$$2z = \frac{x^2}{\alpha} + \frac{y^2}{\beta}.$$

289. Find the umbilici of the surface $xyz = a^3$.

290. Shew that the radius of normal curvature of the surface $xyz = a^3$ at an umbilicus is equal to the distance of the umbilicus from the origin of co-ordinates.

291. A sphere described from the origin with radius $\frac{abc}{ac + ab + bc}$ will touch the surface

$$\left(\frac{x}{a}\right)^{\frac{2}{3}} + \left(\frac{y}{b}\right)^{\frac{2}{3}} + \left(\frac{z}{c}\right)^{\frac{2}{3}} = 1$$

in points which are umbilici.

292. Shew that a sphere whose centre is at the origin and whose radius r is determined by the equation

$$r^{\frac{2n}{n-2}} = a^{\frac{2n}{n-2}} + b^{\frac{2n}{n-2}} + c^{\frac{2n}{n-2}}$$

will touch the surface

$$\left(\frac{x}{a}\right)^n + \left(\frac{y}{b}\right)^n + \left(\frac{z}{c}\right)^n = 1$$

at umbilici; and the radius of normal curvature of the surface at these points is $\frac{r}{n-1}$.

293. Determine whether there is an umbilicus on the surface

$$(x^2 + y^2 + z^2)^2 = 4a^2(x^2 + y^2).$$

294. If R be the radius of absolute curvature at any point of a curve defined by the intersection of two surfaces $u_1 = 0$, $u_2 = 0$, and r_1 , r_2 be the radii of curvature of the sections of $u_1 = 0$, $u_2 = 0$, made by the tangent planes to $u_2 = 0$, $u_1 = 0$, respectively at that point, shew that R , r_1 , r_2 will be connected by the relation

$$\frac{1}{R^2} = \frac{1}{r_1^2} - \frac{2 \cos \theta}{r_1 r_2} + \frac{1}{r_2^2},$$

θ being the angle between the tangent planes.

295. Two surfaces touch each other at the point P ; if the principal curvatures of the first surface at P be denoted by $a \pm b$, those of the second by $a' \pm b'$, and if ϖ be the angle between the principal planes to which $a + b$, $a' + b'$, refer, and δ the angle between the two branches at P of the curve of intersection of the surfaces, shew that

$$\cos^2 \delta = \frac{(a - a')^2}{b^2 + b'^2 - 2bb' \cos 2\varpi}.$$

296. Shew that at any point of a developable surface, the curvature of any normal section varies as the square of the sine of the angle which this section makes with the generating line, and that at different points along the same generating line the principal radius of curvature varies as the distance from the point of intersection of consecutive generating lines.

297. A surface is generated by the motion of a straight line which always intersects a fixed axis. If P be any point in this axis at a distance x from the origin, ϕ the angle which the generating line through this point makes with the axis, and ψ the angle which the plane through the axis and the generating line makes with its initial position, shew that the principal radii of curvature at P are

$$\cot \frac{\phi}{2} \frac{dx}{d\psi} \text{ and } -\tan \frac{\phi}{2} \frac{dx}{d\psi}.$$

298. The shortest distance between two points on a curved surface never coincides with a line of curvature unless it be a plane curve.

VI. *Miscellaneous Examples.*

299. Find the condition that must hold in order that the equations

$$ax + c'y + b'z = 0, \quad by + a'z + c'x = 0, \quad cz + b'x + a'y = 0,$$

may represent a straight line; and shew that in that case the straight line is determined by the following equations:

$$x(aa' - b'c) = y(bb' - c'a) = z(cc' - a'b).$$

300. Shew that the six planes which bisect the interior angles of a tetrahedron meet in a point.

301. Shew that the three planes which bisect the exterior angles round one face of a tetrahedron and the three planes which bisect the interior angles formed by the other three faces meet in a point.

302. If $\alpha = 0$, $\beta = 0$, $\gamma = 0$, $\delta = 0$ be the equations to the faces of a tetrahedron expressed in a suitable form, A , B , C , D the areas of the respective faces, shew that

$$A\alpha + B\beta + C\gamma + D\delta = \text{a constant.}$$

Interpret $A\alpha + B\beta + C\gamma = 0$.

303. If $\alpha = 0$, $\beta = 0$, $\gamma = 0$ be the equations to three planes which form a trihedral angle, the equation to a cone of the second degree which has its vertex at the angular point and touches two of the planes at their intersections with the third, is $\gamma^2 - k\alpha\beta = 0$.

304. Give the geometrical interpretation of the equation $uu' = kvv'$, where k is a constant, and the other letters denote linear functions of x , y , z . Hence shew that there must exist surfaces of the second order which contain straight lines.

305. If $u_1 = 0$, $u_2 = 0$, $u_3 = 0$ be the equations to three planes, interpret the equation

$$\sqrt{\left(\frac{u_1}{a}\right)} + \sqrt{\left(\frac{u_2}{b}\right)} + \sqrt{\left(\frac{u_3}{c}\right)} = 0.$$

306. Also interpret $Au_1u_2 + Bu_1u_3 + Cu_1u_2 = 0$.

307. If u, v, w are linear functions of x, y, z shew that $uv = w^2$ represents a conical surface; and shew that the equation to the tangent plane is $\lambda^2u - 2\lambda w + v = 0$.

308. Let $v = 0$ be the equation to a surface of the second order; $u_1 = 0$ and $u_2 = 0$ the equations to two planes; shew that by giving a suitable value to the constant λ the equation $v + \lambda u_1 u_2 = 0$ will represent *any* surface of the second order which passes through the intersections of the two planes with the given surface.

309. If $t = 0, u = 0, v = 0, w = 0$ be the equations to four given planes, and λ, μ , be two arbitrary constants, shew that $t + \lambda u = 0$ represents a plane which passes through a fixed straight line, $t + \lambda u + \mu v = 0$ a plane which passes through a fixed point, and $tw + \mu uv = 0$ a surface of the second order which contains four fixed straight lines.

310. If the equation to a surface of the second order be $u_2 + 2u_1 + 1 = 0$, where u_1 and u_2 represent the terms of the first and second order respectively, and tangent planes be drawn to the surface from any point of the plane determined by $u_1 + 1 = 0$, the planes of contact will all pass through the origin.

311. If $\alpha, \beta, \gamma, \delta$ be the distances of any point from the faces of a tetrahedron, shew that the general equation to a surface of the second order circumscribing the tetrahedron is

$$A\alpha\beta + B\alpha\gamma + C\alpha\delta + D\beta\gamma + E\beta\delta + F\gamma\delta = 0.$$

Determine the condition necessary in order that the straight line $\frac{\alpha}{l} = \frac{\beta}{m} = \frac{\gamma}{n}$ may touch the surface; and hence shew that the equation to the tangent plane at the point ($\alpha = \beta = \gamma = 0$) is

$$C\alpha + E\beta + F\gamma = 0.$$

312. If A, B, C, D be the angular points of a tetrahedron; $\alpha, \beta, \gamma, \delta$ the distances of any point from the faces respectively

opposite to them, shew that the general equation of the hyperboloid of one sheet of which AB , CD are generating lines is

$$l\alpha\gamma + m\alpha\delta + n\beta\gamma + p\beta\delta = 0.$$

313. Interpret $u^2 + v^2 + w^2 = a$, where u , v , w are linear functions of (x, y, z) and a is a constant.

314. Interpret $u^2 + v^2 - w^2 = a$.

315. Interpret $u^2 + v^2 = a$.

316. Interpret $u^2 - v^2 = a$.

317. Interpret $u^2 = a$.

318. Interpret $u^2 + v^2 + w = 0$.

319. Interpret $u^2 - v^2 + w = 0$.

320. Interpret $u^2 + v = 0$.

321. Interpret $\theta = \text{constant}$.

322. Interpret $\phi = \text{constant}$.

323. Interpret $r = \text{constant}$.

324. Interpret $F(\theta) = 0$.

325. Interpret $F(\phi) = 0$.

326. Interpret $F(r) = 0$.

327. Interpret $F(r, \theta) = 0$.

328. Interpret $F(r, \phi) = 0$.

329. Interpret $F(\theta, \phi) = 0$.

330. Describe the form of the surface represented by

$$\frac{\theta^2}{\alpha^2} + \frac{\phi^2}{\beta^2} = 1.$$

331. Interpret $r = a \cos \theta$.

332. Shew that the polar equation to a plane may be put in the form $\frac{c}{r} = \cos \alpha \cos \theta + \sin \alpha \sin \theta \cos(\phi - \beta)$.

333. If p be the perpendicular from the origin on the tangent plane at any point of the surface $r = f(\theta, \phi)$

$$\frac{1}{p^2} = \frac{1}{r^2} + \frac{1}{r^4} \left(\frac{dr}{d\theta} \right)^2 + \frac{\operatorname{cosec}^2 \theta}{r^4} \left(\frac{dr}{d\phi} \right)^2.$$

334. Shew that the polar partial differential equation to conical surfaces with the origin as vertex is

$$\frac{d\phi}{dr} = 0, \quad \text{or} \quad \frac{d\theta}{dr} = 0.$$

335. Shew that the polar partial differential equation to surfaces of revolution is

$$\frac{dr}{d\phi} = 0.$$

336. Shew that the polar partial differential equation to cylindrical surfaces is

$$\sin \theta \frac{dr}{d\theta} + r \cos \theta = 0.$$

337. Find the volume of a pyramid which has its vertex at the point (x, y, z) , and for its base the triangle formed by joining the points where the plane

$$\frac{x}{a} + \frac{y}{b} + \frac{z}{c} = 1$$

meets the co-ordinate axes.

338. Demonstrate the formulæ for transforming from one set of rectangular axes to another. Shew that all six axes lie on a certain cone of the second order.

339. If two systems of rectangular axes have the same origin, and (a_1, b_1, c_1) , (a_2, b_2, c_2) , (a_3, b_3, c_3) be the direction cosines of one system with respect to the other, shew that

$$a_1^2 = (b_2c_3 - b_3c_2)^2, \quad a_2^2 = (b_3c_1 - b_1c_3)^2, \quad a_3^2 = (b_1c_2 - b_2c_1)^2.$$

340. Find the size of a cube which will stop up a tube of uniform bore, the section of which is a regular hexagon whose sides are given.

341. The stereographic projection of a cube on a plane perpendicular to its diagonal (the pole being in the diagonal produced) is an equilateral hexagon, whose angles are alternately greater and less. If the pole of projection be at a distance from the cube equal to its diagonal, the sines of two adjacent angles of the hexagon are as 8 to 5.

342. A cube being placed with one face in contact with a given plane, determine the position of a luminous point such that the shadow cast on the plane shall be an equilateral pentagon of which the diagonal of the above face is one side.

343. Find the locus of the centres of the sections of a surface of the second order made by planes which all pass through a fixed straight line.

344. Find the locus of the middle points of all chords drawn in a surface of the second degree, the length of each chord varying as the diameter parallel to it.

345. From different points of the straight line $\frac{x}{a} = \frac{y}{b}, z = 0$, asymptotic straight lines are drawn to the hyperboloid

$$\frac{x^2}{a^2} + \frac{y^2}{b^2} - \frac{z^2}{c^2} = 1;$$

shew that they will all lie in the planes

$$\frac{x}{a} - \frac{y}{b} = \pm \frac{z}{c} \sqrt{2}.$$

346. Common tangent planes are drawn to the ellipsoids

$$\frac{x^2}{a^2} + \frac{y^2}{b^2} + \frac{z^2}{c^2} = 1, \text{ and } \frac{x^2}{a'^2} + \frac{y^2}{b'^2} + \frac{z^2}{c'^2} = 1;$$

shew that the perpendiculars upon them from the origin lie in the surface of the cone

$$(a^2 - a'^2) x^2 + (b^2 - b'^2) y^2 + (c^2 - c'^2) z^2 = 0.$$

347. Determine what must be the form of a column in order that it may appear to be of uniform thickness to an observer in a given position.

348. If the section of the surface whose equation is
 $ax^2 + by^2 + cz^2 + 2a'yz + 2b'zx + 2c'xy + 2a''x + 2b''y + 2c''z + f = 0$,
 by the plane whose equation is

$$lx + my + nz = p$$

be a rectangular hyperbola, then will

$$l^2(b+c) + m^2(c+a) + n^2(a+b) = 2a'mn + 2b'nl + 2c'lm.$$

349. If the section of the surface $xy + yz + zx = a^2$ by the plane $lx + my + nz = \delta$ be a parabola, then will

$$l^2 + m^2 + n^2 - 2mn - 2nl - 2lm = 0.$$

350. Shew that the asymptotes of any plane section of an hyperboloid are parallel to the straight lines in which the asymptotic cone is cut by the parallel central plane.

351. Two hyperboloids of one and two sheets respectively have the same asymptotic cone; shew that the sections of the hyperboloid of one sheet by tangent planes to the other hyperboloid will be ellipses of constant area if the points of contact lie on the curve of section of the surface by a certain concentric ellipsoid whose axes are in the ratio of the squares of the axes of the hyperboloids.

352. Through two straight lines given in space two planes are drawn so as to be at right angles; find the locus of their intersection.

353. A surface is generated by the intersection of planes cutting the axes of co-ordinates at distances from the origin equal to the respective co-ordinates of each point of the ellipsoid $\frac{x^2}{a^2} + \frac{y^2}{b^2} + \frac{z^2}{c^2} = 1$; if the surface so generated be treated as the ellipsoid and the process repeated n times, the equation to the n^{th} surface will be

$$\left(\frac{x}{a}\right)^{\frac{2}{2n+1}} + \left(\frac{y}{b}\right)^{\frac{2}{2n+1}} + \left(\frac{z}{c}\right)^{\frac{2}{2n+1}} = 1.$$

354. A surface is generated by a variable circle whose plane is parallel to $x + y = 0$, and which always passes through the axes of x and y and the line $y = x, z = c$; find the equation to the surface. Also find the volume between the origin and the plane $x + y = c$.

355. Two equal parabolas have their common vertex at the origin, their axes coincident with the axis of x in opposite directions, and their planes coincident with the planes of (x, y) and (x, z) respectively; a straight line is drawn intersecting these curves and parallel to the plane $y = z$; find the locus of its trace on the plane of (y, z) .

356. Explain the nature of the surface defined by the equation

$$\frac{y}{b} = \left\{ \left(\frac{x^2}{a^2} + \frac{z^2}{c^2} \right)^{\frac{1}{2}} - 1 \right\} \left\{ \left(\frac{x^2}{a^2} + \frac{z^2}{c^2} \right)^{\frac{1}{2}} - m \right\}^{\frac{1}{2}}$$

near the points where it meets the hyperboloid

$$\frac{x^2}{a^2} - \frac{y^2}{b^2} + \frac{z^2}{c^2} = 1$$

in the several cases in which m is \geq or < 1 .

357. Planes are drawn perpendicular to the tangent lines to the surface $f(x, y, z) = 0$ at a point (x, y, z) in it; shew that if at that point

$$\frac{df}{dx} = 0, \quad \frac{df}{dy} = 0, \quad \frac{df}{dz} = 0.$$

$$\frac{d^2f}{dx^2} = u, \dots \frac{d^2f}{dy dz} = u', \dots$$

the locus of the ultimate intersections of the planes is the cone

$$(vw - u^2)(\xi - x)^2 + \dots + 2(v'w' - uu')(\eta - y)(\zeta - z) + \dots = 0.$$

358. Shew that the normal cone at a singular point of the surface

$$(x^2 + y^2 + z^2)(a^2x^2 + b^2y^2 + c^2z^2) - a^2(b^2 + c^2)x^2 - b^2(c^2 + a^2)y^2 - c^2(a^2 + b^2)z^2 + a^2b^2c^2 = 0$$

has for its equation

$$(b^2 - c^2)(\xi - x_0)^2 + (c^2 - a^2)\eta^2 + (a^2 - b^2)(\zeta - z_0)^2 - \frac{c^2 + a^2}{ca} \sqrt{(a^2 - b^2)} \sqrt{(b^2 - c^2)} (\zeta - z_0)(\xi - x_0) = 0,$$

where $x_0 = \frac{c\sqrt{(a^2 - b^2)}}{\sqrt{(a^2 - c^2)}}$, $y_0 = 0$, $z_0 = \frac{a\sqrt{(b^2 - c^2)}}{\sqrt{(a^2 - c^2)}}$

are the co-ordinates of the singular point.

359. If $f(x, y, z, c) = 0$ represent a system of surfaces for which c is a variable parameter, shew how to find the locus of the points of contact of tangent planes to each one of the system, each tangent plane passing through a fixed point.

Ex. $x^2 + y^2 = 2c(z - c)$, each of the tangent planes passing through the origin.

360. If PN be the normal at the point P of any surface, a, b the principal radii of curvature at P , r the radius of curvature of the normal section made by a plane inclined at an angle θ to the principal section to which a refers, $PQ = s$ an indefinitely small arc in this section, prove that if D be the minimum distance of the normals at P and Q , c the distance from P of their point of nearest approach

$$D^2 = \frac{\sin^2 \theta \cos^2 \theta (a - b)^2 s^2}{b^2 \cos^2 \theta + a^2 \sin^2 \theta}, \quad c = \frac{ab (b \cos^2 \theta + a \sin^2 \theta)}{b^2 \cos^2 \theta + a^2 \sin^2 \theta}.$$

Express also $\frac{D^2}{s^2}$ and c in terms of a, b and r .

361. A family of surfaces is defined by the equation

$$F\{x, y, z, a, \phi(a), \psi(a)\} = 0,$$

where a is a variable parameter and $\phi(a)$ and $\psi(a)$ arbitrary functions of a ; shew how to find the partial differential equation of the second order which belongs to the envelope, and prove that it assumes the form

$$rt - s^2 + Pr + Qs + Rt + S = 0,$$

where P, Q, R, S are functions of x, y, z, p and q .

362. If the equation to a system of surfaces contains an arbitrary parameter, shew that a curve can always be found which cuts them all at right angles.

363. Find the equations to a curve which cuts at right angles a series of ellipsoids which have their axes fixed in position and two of them of given length.

364. Shew that the section of a surface made by a plane parallel and indefinitely near to the tangent plane at any point in the immediate neighbourhood of that point is generally a conic section; and explain fully the peculiarity of the surface near a point where this conic section becomes two parallel straight lines.

365. Shew how to determine whether a curved surface has a tangent plane which touches it along a line. Examples:

$$(1) \quad (x^2 + y^2 + z^2)^2 = 4a^2(x^2 + y^2).$$

$$(2) \quad b^2z = (x^2 + y^2)^2 - a^2(x^2 + y^2).$$

366. The extremities of the minor axis of the elliptic sections of a right cone made by parallel planes lie in two generating lines of the cone.

367. Shew how to cut from a given right cone an hyperbola whose asymptotes shall contain the greatest possible angle.

368. What is the section of a right cone by a plane when the cutting plane is parallel to a generating line, but not perpendicular to the plane containing the axis and that line?

369. If two spheres exterior to each other be inscribed in a right cone touching it in two circles on the same side of the vertex, and a plane be drawn touching the spheres and cutting the cone; shew that the section is an ellipse, that the points of contact of the spheres with the plane are the foci, and that the planes of the two circles contain the directrices.

370. A conical surface is placed with its circular base in contact with a plane. It is then slit along a generating line

and the vertex pressed in a direction perpendicular to the plane, the base remaining in contact while the surface opens out; shew that the extremities of the separating edges trace hyperbolic spirals.

371. A triangle ABC revolves about a straight line which bisects the angle A , and the conical surface generated by the sides containing that angle is cut by a plane passing through the other side and perpendicular to the plane of the triangle in one of its positions; shew that if e be the excentricity of the section, $e^2 = \frac{(b-c)^2}{a^2}$.

372. If the cone $x^2 + y^2 = z(mx + nz)$ cut any sphere which has its centre at the origin, shew that the projection on the plane of (x, z) of the curve of intersection is an hyperbola which has its centre at the origin.

373. A straight inelastic band is wrapped smoothly on the surface of a cone; shew that however long it may be, the two ends of either of its edges cannot be made to meet, if the vertical angle of the cone be greater than 60° .

374. Shew that an oblique cone on a circular base can be cut by a plane not parallel to the base, so that the section shall be a circle. Shew that the cone so cut off is similar to the whole cone.

375. If $f(x, y, z) = 0$ be the equation to any surface which passes through the origin, and $\phi(x, y, z)$ the sum of all the terms of lowest dimension in $f(x, y, z)$, shew that $\phi(x, y, z) = 0$ is the locus of all the tangent lines at the origin.

376. Find the surface which touches at the origin the surface whose equation is

$$(x^2 + y^2 + z^2 + 2ax)^2 - 4(c^2 - a^2)(y^2 + z^2) = 0;$$

and shew that as a diminishes and ultimately vanishes, the tangent cone contracts and ultimately becomes a line, and that as a increases up to c it expands and finally becomes a plane.

377. A circle always touches the axis of z at the origin, and passes through a fixed straight line in the plane of (x, y) ; find the equation to the surface generated. Shew that the origin is a singular point, and that in its immediate neighbourhood the surface may be conceived to be generated by a circle having its plane parallel to that of (x, y) , and its radius proportional to z^2 .

378. A circle revolves round a chord in its own plane, the direction cosines of which are l, m, n ; shew that the equation to the surface generated is

$$(lx + my + nz - h)^2 + [\sqrt{\{x^2 + y^2 + z^2 - (lx + my + nz)^2\}} - k]^2 = r^2,$$

where r is the radius of the circle; h and k the distances of the centre of the circle along and from the chordal line which is supposed, to pass through the origin; determine the singular points of this surface and the equation to the tangent cone there; also determine the equation to the tangent planes which touch the surface along circles.

379. The traces of a surface of the second order on two planes at right angles to each other are parabolas with their axes parallel to the line of intersection of the planes; find the condition that the surface may be a developable surface; and shew that in that case the trace of the surface on a plane perpendicular to the first two will also be a parabola.

380. Find the locus of the point in which a perpendicular from the origin meets a plane which cuts off a constant volume from the co-ordinate planes.

381. An oblique cylinder stands on a great circle of a sphere; determine the curve of intersection of the sphere and cylinder, and find the area of the spherical surface included within the cylinder.

382. The locus of the intersection of generating lines of an hyperboloid of one sheet which pass through extremities of conjugate diameters of the smallest elliptic section is a similar ellipse parallel to it, whose axes are to the axes of the former as $\sqrt{2}$ to 1.

383. Find the surface which is generated by a straight line which is always parallel to the plane of (x, y) , and passes through the axis of z , and also through the curve determined by $xyz = a^3$, $x^2 + y^2 = c^2$.

384. A normal to the surface of which the equation is

$$x \cos nz - y \sin nz = 0,$$

moves along any one of its generating lines; determine the surface generated.

385. The equations to a system of lines in space, straight or curved, contain two arbitrary parameters; shew how to find whether the lines can be cut at right angles by a system of surfaces, and when they can shew how to find the equation to that system.

EXAMPLES. (1) Let the lines be a system of right lines, each of which intersects two given right lines which are perpendicular to each other but do not intersect. (2) Let the equations to the system of lines be $Ax^\alpha = By^\beta = Cz^\gamma$, where A, B, C , are arbitrary.

386. The equation to a system of surfaces contains one arbitrary parameter; normals are drawn at all points of one of these surfaces, and the lengths of the normals are taken proportional to the ultimate distances between the surface in question and a consecutive surface; shew how to find the equation to the locus of the extremities of the normals.

387. The equations to a system of right lines in space contain two arbitrary parameters; shew that when the roots of a certain quadratic are real and unequal, there are two planes passing through a given line of the system which contain consecutive lines.

388. A cavity is just large enough to allow of the complete revolution of a circular disk of radius c , whose centre describes a circle of the same radius c , while the plane of the disk is constantly parallel to a fixed plane and perpendicular

to that of the circle in which its centre moves. Shew that the volume of the cavity is $\frac{2c^3}{3} (3\pi + 8)$.

389. The solid of which the surface is determined by the equation $\sqrt{x} + \sqrt{y} + \sqrt{z} = \sqrt{a}$ revolves round the fixed axis of z and makes for itself a cavity in a mass of yielding material; determine the form and magnitude of the cavity.

390. Shew that the surfaces represented by the equations

$$\frac{x^2}{a^2} + \frac{y^2}{b^2} + \frac{z^2}{c^2} = 1, \quad \frac{\alpha^2}{x^2} + \frac{\beta^2}{y^2} + \frac{\gamma^2}{z^2} = 1,$$

will touch each other in eight points if

$$\frac{a}{\alpha} + \frac{\beta}{b} + \frac{\gamma}{c} = 1;$$

and prove that if tangent planes be drawn at these points they will form a solid whose opposite faces are similar and parallel, and the volume of which is

$$\frac{4}{3} \frac{(abc)^{\frac{3}{2}}}{(\alpha\beta\gamma)^{\frac{3}{2}}}.$$

391. Normals are drawn to the ellipsoid

$$\frac{x^2}{a^2} + \frac{y^2}{b^2} + \frac{z^2}{c^2} = 1$$

at every point of its curve of intersection with the sphere

$$x^2 + y^2 + z^2 = p^2;$$

prove that the equation to the curve in which the locus of these normals is cut by the plane of (y, z) is

$$\frac{b^2 y^2}{a^2 - b^2} + \frac{c^2 z^2}{a^2 - c^2} = a^2 - p^2.$$

392. Find the envelope of the plane

$$ax + \beta y + \gamma z = 1,$$

the parameters α, β, γ being subject to the relations

$$a\alpha + b\beta + c\gamma = 1,$$

$$a^2\alpha^2 + b^2\beta^2 + c^2\gamma^2 = 1.$$

393. Determine the singular point on the surface

$$a^2x^2 + b^2y^2 = z^2(c - z),$$

and the locus of the tangent lines there.

394. The tangent plane to a surface S cuts an ellipsoid, and the locus of the vertex of the cone which touches the ellipsoid in the curve of intersection is another surface S' . Shew that S and S' are reciprocal; that is, that S may be generated from S' in the same manner as S' has been generated from S .

395. A plane moves so as always to cut off from an ellipsoid the same volume; shew that it will in every position touch a similar and concentric ellipsoid.

396. Shew that the tangent plane at any point, of the surface

$$(ax)^2 + (by)^2 + (cz)^2 = 2(bcyz + caxx + abxy),$$

intersects the surface

$$ayz + bzx + cxy = 0$$

in two straight lines which are at right angles to one another.

397. A plane is drawn through the axis of y such that its trace upon the plane of (z, x) touches the two circles in which the plane of (z, x) meets the surface generated by the revolution round the axis of z of the circle

$$(x - a)^2 + z^2 = c^2,$$

where a is greater than c ; determine the curve of intersection of the plane and the surface.

398. A line of constant length moves with one extremity in the axis, and the other in the surface of an elliptic cone; find the equation to the surface which is the locus of its middle point, and shew that the trace on a plane passing through the vertex at right angles to the axis is an ellipse.

399. A plane is drawn through a generating line of an hyperboloid of one sheet; shew that it meets the surface again in a straight line,

400. A plane moves so as always to enclose between itself and a given surface S a constant volume; shew that the envelope of the system of such planes is the same as the locus of the centres of gravity of the portions of the planes comprised within S .

401. OA, OB, OC are three straight lines mutually at right angles, and a luminous point is placed at C ; shew that when the quantity of light received upon the triangle AOB is constant, the curve which is always touched by AB , will be an hyperbola whose equation referred to the axes OA, OB is

$$(y - mx)(x - my) = mc^2,$$

where $OC = c$, and m is a constant quantity.

402. If $u = f(x, y, z)$ be a rational function of x, y, z , and if $u = 0$ be the equation to a surface, for a point (a, b, c) of which all the partial differential coefficients of u as far as those of the $(n - 1)^{\text{th}}$ order vanish, shew that the conical surface whose equation is

$$\left\{ (x - a) \frac{d}{da} + (y - b) \frac{d}{db} + (z - c) \frac{d}{dc} \right\}^n f(a, b, c) = 0$$

will touch the proposed surface at the point (a, b, c) .

403. Determine the condition to which the vertices of a system of cones which envelope an ellipsoid must be subject, in order that the centres of the ellipses of contact may be equidistant from the centre of the ellipsoid.

404. A plane passes through the vertex of the elliptic paraboloid $2z = \frac{x^2}{a} + \frac{y^2}{b}$; shew that if the radius of curvature of all its sections of the surface at the vertex be equal to c , the normal to the plane at the origin will lie upon the surface

$$(x^2 + y^2)^2 = c^2 (x^2 + y^2 + z^2) \left(\frac{x^2}{b} + \frac{y^2}{a} \right)^2.$$

405. Find the position in which an ellipsoid must be placed in order that its orthogonal projection may be circular, assuming that the plane on which it is projected must be parallel to its mean axis.

406. Find the equation to the surface generated by a straight line of given length, which moves parallel to the plane of (x, y) , with one end in the plane of (y, z) and the other on a given curve, $x = \phi(z)$, in the plane of (x, z) .

407. Find the shortest distance between the diagonal of a cube and an edge which it does not meet.

408. Find the equation to the plane which passes through the origin and contains the straight line determined in Example 45.

409. Find the equations to the perpendicular from the origin on the straight line determined in Example 45, and the co-ordinates of the point of intersection.

410. A cube is cut by a plane perpendicular to one of its diagonals: determine the perimeter and area of the section, and the greatest value of the area.

411. Find the point from which the sum of the squares of the perpendiculars on four given planes is a minimum.

412. If one of the diagonals of a rectangular parallelepiped be so placed as to subtend at the eye a right angle each of the others will at the same time appear under a right angle.

413. Find the largest parallelepiped which can be inscribed in a given ellipsoid.

414. A series of planes described according to a given law cut an ellipsoid whose equation is

$$\frac{x^2}{a^2} + \frac{y^2}{b^2} + \frac{z^2}{c^2} = 1;$$

find the locus of the centres of all the plane sections.

Ex. If the normal to the cutting plane be a generating line of the cone $a^2x^2 + b^2y^2 - c^2z^2 = 0$, the locus will be another cone whose equation is

$$\frac{x^2}{a^2} + \frac{y^2}{b^2} - \frac{z^2}{c^2} = 0.$$

415. Find the condition that the plane $lx + my + nz = p$ may cut the surface $\frac{x^2}{a^2} + \frac{y^2}{b^2} - \frac{z^2}{c^2} = 1$ in two straight lines.

416. A cone whose vertical angle is 90° intersects the sphere which touches the axis of the cone at the vertex; find the projections of the curve of intersection on the plane perpendicular to the axis of the cone, on that perpendicular to the diameter of the sphere at the vertex, and on that which contains these two straight lines; and compare the areas of the latter two.

417. If a section be taken through the axis of an oblate spheroid, and through the directrix of the curve thus formed any plane be drawn cutting the surface, the cone which has for its base the section of the surface by this plane and for its vertex the focus corresponding to the directrix will be one of revolution.

418. Find the equation to the locus of a straight line always intersecting and perpendicular to the straight line $x + y = 0, z = 0$, and passing through the perimeter of the parabola $x^2 = lz, y = 0$.

419. All sections of the surface

$$\frac{x^2}{a^2} + \frac{y^2}{b^2} + \frac{z^2}{c^2} = 1,$$

which are at the same distance p from the origin, have their centres on the surface of which the equation is

$$\left(\frac{x^2}{a^2} + \frac{y^2}{b^2} + \frac{z^2}{c^2}\right)^2 = p^2 \left(\frac{x^2}{a^4} + \frac{y^2}{b^4} + \frac{z^2}{c^4}\right).$$

420. Determine the surface represented by $z^2 = xy + x^2$.

421. Determine the surface represented by

$$x^2 - y^2 - z^2 + 2yz + x + y - z = 0.$$

422. The ellipsoid $\frac{x^2}{a^2} + \frac{y^2}{b^2} + \frac{z^2}{c^2} = 1$ is cut by the plane $lx + my + nz = p$: find the equation to an ellipsoid similar to the original ellipsoid and similarly situated, which has its centre at the centre of the plane section and passes through the curve of intersection. Apply the result to find the area of the plane section.

423. Suppose u a homogeneous function of the second degree, v_1 and v_2 homogeneous functions of the first degree, c_1 and c_2 constants; then the cone which has its vertex at the origin and for directrix the intersection of $u + v_1 + c_1 = 0$ and $v_2 + c_2 = 0$ is determined by

$$c_2^2 u - c_1 v_1 v_2 + c_1 v_2^2 = 0.$$

424. Find the area of the section of the cone

$$\frac{x^2}{a^2} + \frac{y^2}{b^2} - \frac{z^2}{c^2} = 0$$

made by the plane $lx + my + nz = p$.

425. Find the volume contained between the plane and the cone in the preceding Example.

426. Shew that the tangent plane at any point of an

hyperboloid of two sheets cuts off a constant volume from the asymptotic cone.

427. A straight line passing through a fixed point and having the sum of its inclinations to two fixed straight lines through the same point constant generates a cone of the second order.

Any section perpendicular to either of the fixed straight lines has for its focus its intersection with the fixed straight line.

428. If two surfaces of the second order touch at two points they will in general intersect in two planes.

429. If PQ , PR be any two chords of an ellipsoid in the same plane with a fixed chord PK and inclined at the same angle to it, then the locus of all the possible intersections of QR , $Q'R'$, &c. will be the straight line PK and a plane curve.

430. A sphere touches an elliptic paraboloid at the vertex and has its diameter a mean proportional between the parameters of the principal sections of the paraboloid; find the equation to the projection of the curve of intersection on the tangent plane at the vertex.

431. A cone has its vertex at the centre of an ellipsoid and for its directrix a plane section of the ellipsoid; if the cone cut the tangent plane to the ellipsoid at the extremity of one of its axes in a circle, the plane section of the cone and ellipsoid must pass through one of two fixed points in the smaller of the other two axes.

432. C is the centre of an ellipsoid, P an external point which is the vertex of a cone enveloping the ellipsoid, and with any point Q as vertex a cone is constructed having its generating lines parallel respectively to those of this enveloping cone: shew that the cone having its vertex at Q cannot cut the ellipsoid in a plane curve unless Q be on the straight line CP or CP produced.

433. An oblate spheroid revolves about any diameter:

find the equation to the surface which envelopes it in every position.

434. If any number of straight lines, drawn in any directions from one given point have their lengths proportional to the cosines of the angles which they severally make with the longest line a , and spheres be described on each of these straight lines as diameters, these spheres will be enveloped by the surface generated by the revolution of the curve

$$r = a \cos^2 \frac{\theta}{2},$$

the given point being the pole.

435. A plane is moved so as to cut off from the co-ordinate planes areas whose sum is always equal to $2n^2$; shew that the surface to which the plane is always a tangent plane is represented by the equation

$$(3x - u)(3y - u)(3z - u) + 9n^2u = 0,$$

where $u = x + y + z \pm \sqrt{(3n^2 + x^2 + y^2 + z^2 - xy - yz - zx)}$.

436. Find the general functional equation to the surfaces of Example 204.

437. Tangent planes to the surface determined by

$$\frac{x^3}{a^3} + \frac{y^3}{b^3} + \frac{z^3}{c^3} = 1$$

pass through a point P ; shew that a sphere can be described through the curve of contact provided P lie on a certain straight line passing through the origin.

438. A straight line BC of given length moves with its extremities always on two fixed straight lines AB, AC at right angles to each other; from the point A a perpendicular AD is drawn to BC , and with radius AD and centre D a circle is described having its plane perpendicular to BC : find the equation to the surface generated by the circle.

439. Determine the surface represented by

$$z^2 = \{\sqrt{(x^2 + y^2)} - a\} \{b - \sqrt{(x^2 + y^2)}\}.$$

440. If r be the radius vector, p the perpendicular from the origin on the tangent, s the arc of a curve,

$$p \frac{dp}{dr} = \frac{p^2}{r} - r^2 \frac{d^2r}{ds^2}.$$

441. If ρ be the radius of absolute curvature of a curve, ρ' the distance of the centre of absolute curvature from the origin, r the radius vector, p the perpendicular from the origin on the tangent,

$$r \frac{dr}{dp} = \frac{2\rho^2 p}{r^2 + \rho^2 - \rho'^2}.$$

442. In the surface $2cz^2 + z(x^2 + 2xy + y^2 - 2c^2) - 4cxy = 0$ find the radius of curvature of a normal section at any point in the axis of x , the tangent to the curve of section at the point being perpendicular to the axis of x .

443. In the surface of the preceding Example find the principal radii of curvature for any point in the axis of x .

444. Assuming that the curvature at any point of a surface is measured by the product of the reciprocals of the principal radii, shew that the lines of equal curvature on the surface of an elliptic paraboloid are projected on a plane perpendicular to its axis in similar ellipses, whose axes are proportional to the parameters of the principal sections of the paraboloid.

445. Conceive a system of surfaces of such a nature that a normal at any point of one of them is a normal to all the rest; let $u=0$ be the equation to one of these surfaces, let the normal at any point P be the axis of z , and let the distance of the origin from the point P be an harmonic mean between the greatest and least radii of curvature at that point: then shew that at the point P

$$\frac{d^2u}{dx^2} + \frac{d^2u}{dy^2} + \frac{d^2u}{dz^2} = \frac{1}{z} \frac{d^2(uz)}{dz^2}.$$

446. A plane passes through a fixed point; find its position when the volume included between it and the co-ordinate planes is a minimum.

447. A solid angle is formed by three planes; the tangent plane to a given surface meets them, and so forms the base of a tetrahedron. Shew that in general when this tetrahedron is a maximum or a minimum the point of contact is at the centre of gravity of the base of the tetrahedron.

448. The number of normals to a surface of the n^{th} degree which can pass through a given point cannot exceed

$$n^2 - n^2 + n.$$

449. In a surface of the second degree the locus of the points for which the sum of the squares of the normals to the surface is a constant quantity, is a surface of the second degree concentric with the given surface, and having the direction of its principal axes the same.

450. Two spheres being given in magnitude and position, every sphere which intersects them in given angles will touch two other fixed spheres, or cut another at right angles.

RESULTS OF THE EXAMPLES.

1. $\frac{x}{a} + \frac{y}{b} + \frac{z}{c} = 2.$

2. $\frac{x}{a} + \frac{y}{b} - \frac{z}{c} = 1.$

3. $\frac{y}{b} = \frac{z}{c}; \quad \frac{x}{a} = \frac{z}{c}.$

4. $\frac{x}{a} = \frac{y}{b} = \frac{z}{c}.$

5. $\frac{x}{a} = \frac{y-b}{-b} = \frac{z}{c}; \quad \frac{x-a}{-a} = \frac{y}{b} = \frac{z}{c}.$

6. $\frac{2abc}{\sqrt{(a^2b^2 + b^2c^2 + c^2a^2)}}.$

7. $\frac{2abc}{\sqrt{(a^2b^2 + b^2c^2 + c^2a^2)}}.$

8. $\cos^{-1} \frac{ab}{\sqrt{(a^2 + c^2)} \sqrt{(b^2 + c^2)}}.$

9. $\cos^{-1} \frac{3}{\sqrt{(a^2 + b^2 + c^2)} \sqrt{\left(\frac{1}{a^2} + \frac{1}{b^2} + \frac{1}{c^2}\right)}}.$

10. $\cos^{-1} \frac{a^2 + b^2 - c^2}{a^2 + b^2 + c^2}.$

11. $\frac{x}{a} = \frac{2y}{b} = \frac{2z}{c}.$

12. The equation may be written

$$(x \cos \beta - y \cos \alpha)^2 + (y \cos \gamma - z \cos \beta)^2 + (z \cos \alpha - x \cos \gamma)^2 = 0;$$

thus it represents the line

$$\frac{x}{\cos \alpha} = \frac{y}{\cos \beta} = \frac{z}{\cos \gamma}.$$

13. $30^\circ.$

14. $\frac{Ax + By + Cz - D}{A\alpha + B\beta + C\gamma - D} = \frac{A'x + B'y + C'z - D'}{A'\alpha + B'\beta + C'\gamma - D'}.$

15. $D(Ax + By + Cz) = D(A'x + B'y + C'z);$ the condition is

$$\left(\frac{D}{D'}\right)^2 = \frac{A^2 + B^2 + C^2}{A'^2 + B'^2 + C'^2}.$$

16. $(x-a) \{m(c-c') - n(b-b')\} + \&c. = 0.$

17. First obtain the equation to the plane which contains the two given lines; this is

$$x(m_1n_2 - m_2n_1) + y(n_1l_2 - n_2l_1) + z(l_1m_2 - l_2m_1) = 0;$$

then find the equation to a plane which is perpendicular to the plane just determined and equally inclined to the two given lines.

21. $\frac{5}{3}\sqrt{2}$.

22. $(x-a)(mm' - m'n) + \&c. = 0$.

23. The question is indeterminate, since an unlimited number of lines can be drawn as required.

24. Suppose the given plane to be determined by

$$Ax + By + Cz = D;$$

and suppose that the line of intersection is to lie in the plane of (x, y) ; then we may assume for the equation to the required plane $Ax + By + \lambda z = D$, and determine λ suitably.

27. 60° .

28. Four straight lines.

29. The condition is $a^2 + b^2 + c^2 + 2abc = 1$.

30. $(p_1 \cos \alpha - p \cos \alpha_1)x + (p_1 \cos \beta - p \cos \beta_1)y + \lambda z = 0$,

where $(p_1 \cos \alpha - p \cos \alpha_1)^2 + (p_1 \cos \beta - p \cos \beta_1)^2 + \lambda(p_1 \cos \gamma - p \cos \gamma_1) = 0$.

31. Let the given point be (a, b, c) and the equations to the given planes

$$Ax + By + Cz = D, \quad A'x + B'y + C'z = D';$$

the required equation is

$$(x-a)(BC' - B'C) + \&c. = 0.$$

37. $\frac{p+p'}{\sqrt{(2+2k)}}$ and $\frac{p-p'}{\sqrt{(2-2k)}}$, where $k = ll' + mm' + nn'$.

41. Let r denote the distance between (a, β, γ) and (x, y, z) ; then

$$\begin{aligned} (A^2 + B^2 + C^2)r^2 &= (A^2 + B^2 + C^2)\{(x-a)^2 + (y-\beta)^2 + (z-\gamma)^2\} \\ &= \{B(z-\gamma) - C(y-\beta)\}^2 + \{C(x-a) - A(z-\gamma)\}^2 + \{A(y-\beta) - B(x-a)\}^2 \\ &\quad + \{A(x-a) + B(y-\beta) + C(z-\gamma)\}^2; \end{aligned}$$

The last term is *constant* if (x, y, z) be in the given plane; hence the *least* value of r^2 is obtained by making the other three terms vanish.

44. The exceptional case is when the line of intersection of two of the planes is perpendicular to the third plane.

$$45. \quad \frac{1}{a} \left\{ x - \frac{b\gamma - c\beta}{a^2 + b^2 + c^2} \right\} = \frac{1}{b} \left\{ y - \frac{ca - a\gamma}{a^2 + b^2 + c^2} \right\} = \frac{1}{c} \left\{ z - \frac{a\beta - ba}{a^2 + b^2 + c^2} \right\}.$$

46. The condition is $al + bm + cn = 0$; then the equations may be written

$$\frac{1}{l} \left\{ x - \frac{cm - bn}{l^2 + m^2 + n^2} \right\} = \&c.; \quad \text{or thus,} \quad \frac{1}{l} \left\{ x - \frac{cn - bm}{3mn} \right\} = \&c.;$$

or thus,
$$\frac{1}{l} \left\{ x - \frac{c - b}{l + m + n} \right\} = \&c.$$

47. The equations to the perpendicular are

$$\frac{x}{mc - nb} = \frac{y}{na - lc} = \frac{z}{lb - ma}.$$

49. There are two such lines determined by the given equation $lx + my + nz = 0$, combined with

$$x \sqrt{l^2 + n^2} = \pm y \sqrt{m^2 + n^2}.$$

50. Let x, y, z be the co-ordinates of any point in the line; let l, m, n be proportional to its direction cosines; then it may be shewn that

$$\cos^2 a = \frac{(nx - lz)^2 (mx - ly)^2}{\{(nx - lz)^2 + (ny - mz)^2\} \{(mx - ly)^2 + (mz - ny)^2\}};$$

from this we may shew that $\tan^2 a = A (mz - ny)^2$ where A is a symmetrical function of x, y, z, l, m, n .

$$52. \quad \frac{x}{a^2} = \frac{y}{b^2} = \frac{z}{c^2} = \frac{1}{\sqrt{(a^2 + b^2 + c^2)}}; \quad \frac{x}{a} = \frac{y}{b} = \frac{z}{c} = \frac{1}{\sqrt{3}}.$$

$$53. \quad \text{Here } e = \frac{\sqrt{(a^2 - b^2)}}{a}, \quad e' = \frac{\sqrt{(b^2 - c^2)}}{b}. \quad 54. \quad \text{A sphere.}$$

55. The polar equation to the locus is

$$a^2 b^2 = (r^2 + c^2) (a^2 \sin^2 \theta + b^2 \cos^2 \theta).$$

$$56. \quad \text{The straight line } \frac{x}{l} = \frac{y}{m} = \frac{z}{n}.$$

58. The given equation may be written thus, $r^2 = (l^2 + m^2 + n^2) p^2$ where r is the distance of the point (x, y, z) from the origin, and p is

the perpendicular from the point (x, y, z) on the plane $lx + my + nz = 0$. If $l^2 + m^2 + n^2$ is greater than unity the locus is a right circular cone; the cosine of the semivertical angle is $\frac{1}{\sqrt{l^2 + m^2 + n^2}}$. If $l^2 + m^2 + n^2$ is equal to unity the locus is a right line; see example 12. If $l^2 + m^2 + n^2$ is less than unity the locus is a point, namely the origin. 59. The locus is a sphere if C be an acute angle, a point if C be a right angle, and impossible if C be an obtuse angle.

$$60. \quad k^2 = \frac{a^2}{a^2 - b^2}, \quad m^2 = \frac{a^2(b^2 - c^2)}{c^2(a^2 - b^2)}.$$

62. The equations to the cones are

$$\frac{(x-a)^2}{a^2} = \frac{y^2}{b^2} + \frac{z^2}{c^2}, \quad \frac{(y-b)^2}{b^2} = \frac{z^2}{c^2} + \frac{x^2}{a^2}.$$

63. Let (α, β, γ) be the external point; then the required equation is

$$\frac{x^2}{a^2} + \frac{y^2}{b^2} + \frac{z^2}{c^2} = \left(\frac{x\alpha}{a^2} + \frac{y\beta}{b^2} + \frac{z\gamma}{c^2} \right)^2.$$

66. Let (α, β, γ) be the given point; then the required equation is

$$a^2(b^2 - c^2)\frac{x}{a} + b^2(c^2 - a^2)\frac{y}{b} + c^2(a^2 - b^2)\frac{z}{c} = 0.$$

67. A right circular cone. 70. Take for the equation to the ellipsoid $\frac{x^2}{a^2} + \frac{y^2}{b^2} + \frac{z^2}{c^2} = 1$, and for the equation to the sphere $(x-h)^2 + y^2 + z^2 = r^2$; then the equation to the cylinder will be

$$(x-h)^2 + y^2 - \frac{c^2x^2}{a^2} - \frac{c^2y^2}{b^2} = r^2 - c^2.$$

71. The circle circumscribed about the opposite face may be determined by the equations

$$\frac{x}{a} + \frac{y}{b} + \frac{z}{c} = 1, \quad x^2 + y^2 + z^2 = ax + by + cz.$$

A *subcontrary* section is a circular section. The equation to the cone may be written thus

$$(ax + by + cz - k) \left(\frac{x}{a} + \frac{y}{b} + \frac{z}{c} \right) = x^2 + y^2 + z^2 - k \left(\frac{x}{a} + \frac{y}{b} + \frac{z}{c} \right);$$

hence we see that the plane $ax + by + cz - k = 0$, cuts the cone in a circle. If the vertex of the cone be at the angular point which is at the other end of the edge c , the equation to the cone is

$$x^2 + y^2 = (ax + by) \left(1 - \frac{z}{c}\right);$$

and the plane $ax + by - cz = 0$ is parallel to the subcontrary sections.

74. An hyperbolic paraboloid.

75. The locus is determined by the equation to the ellipsoid combined with $xyz = \text{constant}$.

76. Suppose the fixed point in the axis of z ; then we have to make xy a maximum while $\frac{x^2}{a^2} + \frac{y^2}{b^2} = \text{a constant}$.

85. Circles.

88. Let $\frac{x' - x}{l} = \frac{y' - y}{m} = \frac{z' - z}{n} = r$ be the equations to a line which passes through the point (x, y, z) and coincides with the given surface. Substitute the values of x', y', z' in the given equation; we thus obtain a quadratic in r which ought to be *identically* true. This leads to

$$\frac{l^2}{a^2} + \frac{m^2}{b^2} - \frac{n^2}{c^2} = 0, \quad \frac{lx}{a^2} + \frac{my}{b^2} - \frac{nz}{c^2} = 0.$$

Eliminate m from these two equations; thus we obtain a quadratic in $\frac{l}{n}$, and the product of the roots becomes known. The result may be written thus

$$\frac{l_1 l_2}{n_1 n_2} = \frac{x^2 - a^2}{z^2 + c^2}.$$

$$\text{Similarly } \frac{m_1 m_2}{n_1 n_2} = \frac{y^2 - b^2}{z^2 + c^2}.$$

$$\text{Hence } 1 + \frac{l_1 l_2}{n_1 n_2} + \frac{m_1 m_2}{n_1 n_2} = \frac{z^2 + c^2 + x^2 - a^2 + y^2 - b^2}{z^2 + c^2}.$$

92. The condition is $amn + bnl + clm = 0$.

93. When the given conditions hold, the equation becomes

$$(b'c'x + c'a'y + a'b'z)^2 + 2a'b'c'(a''x + b''y + c''z) - a'b'c'f = 0;$$

this represents a parabolic cylinder.

95. Either $b' = 0$ and $c'^2 = (a - c)(b - c)$,
or $c' = 0$ and $b'^2 = (a - b)(c - b)$.

96. An hyperbola.

97. The semi-axes are the positive values of r found from

$$\frac{a^2 l^2}{r^2 - a^2} + \frac{b^2 m^2}{r^2 - b^2} + \frac{c^2 n^2}{r^2 - c^2} = 0.$$

102. If an ellipsoid be cut by a plane through its centre whose direction cosines are l, m, n , the area of the section is known to be

$\frac{\pi abc}{\sqrt{(l^2 a^2 + m^2 b^2 + n^2 c^2)}}$. Now if we seek the maximum and minimum values of $l^2 a^2 + m^2 b^2 + n^2 c^2$, with the condition that the plane is to

contain the line $\frac{x}{\lambda} = \frac{y}{\mu} = \frac{z}{\nu}$, we obtain this quadratic

$$\frac{\lambda^2}{u^2 - a^2} + \frac{\mu^2}{u^2 - b^2} + \frac{\nu^2}{u^2 - c^2} = 0;$$

thus the product of the maximum and minimum values is

$$a^2 b^2 c^2 \left(\frac{\lambda^2}{a^2} + \frac{\mu^2}{b^2} + \frac{\nu^2}{c^2} \right).$$

103. The process will resemble that given in Gregory's *Solid Geometry* for finding the area of the section of the ellipsoid by the plane $lx + my + nz = 0$. If α, β, γ be co-ordinates of the centre of the section it will be found that

$$\frac{\alpha}{a^2 l} = \frac{\beta}{b^2 m} = \frac{\gamma}{c^2 n} = \frac{\delta}{a^2 l^2 + b^2 m^2 + c^2 n^2}.$$

The final result is

$$\frac{(a^2 l^2 + b^2 m^2 + c^2 n^2 - \delta^2) \pi abc}{(a^2 l^2 + b^2 m^2 + c^2 n^2)^{\frac{3}{2}}}.$$

See also *Differential Calculus*, Chapter XVI.

104. The first part may be proved by taking the general equation

$$ax^2 + by^2 + cz^2 + 2a'yz + 2b'zx + 2c'xy + 2a''x + 2b''y + 2c''z + f = 0;$$

and the cutting planes may be supposed parallel to that of (x, y) . For the latter part we must find the ratio of similarly situated

lines in the two sections, and the square of this ratio will be the ratio of the areas. 105. This is a mode of expressing the result of the two preceding examples. The result may also be obtained very easily by referring the ellipsoid to conjugate diameters, two of which are in a plane parallel to the planes considered.

106. The equation to the ellipsoid is

$$\frac{x^2}{a^2} + \frac{y^2}{b^2} + \frac{z^2}{c^2} = \frac{xa}{a^2} + \frac{y\beta}{b^2} + \frac{z\gamma}{c^2}.$$

where (a, β, γ) is the external point.

109. Hyperboloid of one sheet. 110. Hyperboloid of one sheet.

111. Hyperbolic paraboloid.

112. Parabolic cylinder. 113. Hyperboloid of two sheets if f be positive. 114. Right circular cylinder if f be positive.

115. Hyperboloid of revolution of two sheets if f be greater than 48, cone if $f = 48$, hyperboloid of revolution of one sheet if f be less than 48.

116. Hyperboloid of revolution of two sheets.

117. $\frac{2cy}{3\beta}, \frac{2cy}{3a}, 0$ are the co-ordinates.

118. There is a line of centres, given by the equations
 $k = 0, h - l + 1 = 0.$

119. $-\frac{1}{2}, 0, 0$ are the co-ordinates.

122. A surface of revolution, the axis of which is $x = y = z.$

124. Use the equation in Example 65; the locus is a sphere, the radius of which is $\sqrt{(a^2 + b^2 + c^2 + h^2 + k^2)}.$

133. The sine of the angle is $\frac{a^2 - c^2}{a^2 + c^2}$ supposing a, b, c in descending order of magnitude.

142. See a similar example in Geometry of Two Dimensions, *Plane Co-ordinate Geometry*, Art. 286.

144. Refer the ellipsoid to conjugate diameters such that the plane containing two of them is parallel to the cutting plane.

157. $b'^2 - ac$ must be positive and $(b'^2 - ac)(a'^2 - bc) = (a'b' - cc')^2$.

159. Let $x \cos \theta_1 + y \cos \theta_2 + z \cos \theta_3 = u$,
 $x \sin \theta_1 + y \sin \theta_2 + z \sin \theta_3 = v$;

then the second equation is $uv = 0$, and the first is $(u+v)(u-v) = 0$.
 The line of intersection will be found to be determined by

$$\frac{x}{\sin(\theta_3 - \theta_2)} = \frac{y}{\sin(\theta_1 - \theta_3)} = \frac{z}{\sin(\theta_3 - \theta_1)}.$$

160. The other lines are $x = 0$, $yb - zc = 0$; $y = 0$, $zc - xa = 0$;
 $z = 0$, $xa - yb = 0$.

161. The cosine of the inclination of the plane to the axis.

170. Take the equation to an enveloping cylinder

$$\left(\frac{l^2}{a^2} + \frac{m^2}{b^2} + \frac{n^2}{c^2}\right) \left(\frac{x^2}{a^2} + \frac{y^2}{b^2} + \frac{z^2}{c^2} - 1\right) = \left(\frac{lx}{a^2} + \frac{my}{b^2} + \frac{nz}{c^2}\right)^2,$$

and apply the tests in order that it may be a surface of revolution.

182. $\phi(x, y, z) = \phi(a + x - \alpha, \beta + y - \beta, \gamma + z - \gamma)$

$$\begin{aligned} &= u + (x - \alpha) \frac{du}{da} + (y - \beta) \frac{du}{d\beta} + (z - \gamma) \frac{du}{d\gamma} \\ &+ \frac{(x - \alpha)^2}{2} \frac{d^2u}{da^2} + \frac{(y - \beta)^2}{2} \frac{d^2u}{d\beta^2} + \frac{(z - \gamma)^2}{2} \frac{d^2u}{d\gamma^2} \\ &+ (y - \beta)(z - \gamma) \frac{d^2u}{d\beta d\gamma} + (z - \gamma)(x - \alpha) \frac{d^2u}{d\gamma da} + (x - \alpha)(y - \beta) \frac{d^2u}{da d\beta}. \end{aligned}$$

The equation to the tangent plane to the surface $\phi(x, y, z) = 0$
 at the point (x, y, z) is

$$(x' - x) \frac{d\phi}{dx} + (y' - y) \frac{d\phi}{dy} + (z' - z) \frac{d\phi}{dz} = 0;$$

this may be written

$$(x' - x) \left\{ \frac{du}{da} + (x - \alpha) \frac{d^2u}{da^2} + (z - \gamma) \frac{d^2u}{d\gamma da} + (y - \beta) \frac{d^2u}{da d\beta} \right\} + \&c. = 0.$$

Now suppose this plane to pass through the point (α, β, γ) , and
 we obtain a relation which by means of the equation $\phi(x, y, z) = 0$,
 transformed as above, reduces to

$$2u + (x - \alpha) \frac{du}{da} + (y - \beta) \frac{du}{d\beta} + (z - \gamma) \frac{du}{d\gamma} = 0.$$

183. Let a line pass through the point (α, β, γ) and through the point (x, y, z) on the surface; and let (x', y', z') be any other point on this line; then we have

$$\frac{x - \alpha}{x' - \alpha} = \frac{y - \beta}{y' - \beta} = \frac{z - \gamma}{z' - \gamma} = r \text{ say; therefore}$$

$$x = \alpha + r(x' - \alpha), \quad y = \beta + r(y' - \beta), \quad z = \gamma + r(z' - \gamma).$$

Substitute these values of x, y, z in $\phi(x, y, z) = 0$; we thus obtain a *quadratic* in r corresponding to the two points in which the line through (α, β, γ) and (x', y', z') meets the surface. The condition that this quadratic should have *equal* roots leads to the equation to the required cone, x', y', z' being the variable co-ordinates.

185. $a'yz + b'zx + c'xy = 0.$

195. $\frac{x^2}{a^2 - k^2} + \frac{y^2}{b^2 - k^2} + \frac{z^2}{c^2 - k^2} = 0.$

196. The surface is determined by the equation

$$y^2 - 2ay + \frac{z^2 - 2kxz}{k^2} + a^2 = 0,$$

where k is a known constant, and $a = x \left\{ 1 + \sqrt{\left(\frac{2x}{kc}\right) + \frac{x}{kc}} \right\}.$

200. $\frac{x^2}{a^2} + \frac{y^2}{b^2} = \left(1 - \frac{z^2}{c^2}\right) \left(\frac{x}{a} + \frac{y}{b}\right)^2.$

201. $\left(\frac{x}{a} \pm \frac{y}{b}\right)^2 + \frac{z^2}{c^2} = 1.$

205. Take for the equations to the lines those in example 74; let a be the radius of the circle; the required equation is

$$(mxc^2 - cyz)^2 + m^2(mcxz - c^2y)^2 = m^2a^2(c^2 - z^2)^2.$$

212. (1) is not a developable surface; (2) is.

214. $z + \sqrt{(x^2 + y^2 + z^2)} = \phi\left(\frac{y}{x}\right).$

$$215. \quad z^{n+1} - k^{n+1} = x^{n+1} \phi\left(\frac{y}{x}\right). \quad 216. \quad \frac{x^2 + y^2}{a^2} = \frac{(z-c)^2}{c^2}.$$

$$218. \quad (ax + by + cz)^2 = r^2 \{(x+a)^2 + (y+b)^2 + (z+c)^2\}.$$

219. Let the equations to be parabolas be

$$\left. \begin{aligned} y &= 0 \\ z^2 &= 4ax \end{aligned} \right\}, \quad \text{and} \quad \left. \begin{aligned} z &= 0 \\ y^2 &= 4a'x \end{aligned} \right\};$$

the equation to the surface is $4x - \left\{ \frac{y}{\sqrt{a'}} + \frac{z}{\sqrt{a}} \right\}^2 = 0$.

$$224. \quad (x+a) \left\{ \frac{y^2}{a+x-b} + \frac{z^2}{a+x-c} + x-a \right\} = 0,$$

where $2x = \frac{y^2}{b} + \frac{z^2}{c}$ is the equation to the paraboloid.

$$225. \quad (x^2 + \mu^2 y^2)^2 = \frac{k^2}{z^2}, \quad \text{where } \mu \text{ and } k \text{ are known constants.}$$

227. Use conjugate diameters as axes, two of them being parallel to the plane of the circles, and the third passing through the centres of the circular sections.

$$230. \quad y = \pm a \cos \beta. \quad 231. \quad \frac{x'x}{a^2} + \frac{y'y}{b^2} = \frac{1}{2}, \quad z = \frac{c}{\sqrt{2}}.$$

$$232. \quad x' - x = \frac{2y}{a - 2x} (y' - y) = -\frac{2z}{a} (z' - z).$$

233. The curve is determined by the given equation combined with $4z^2 = x^2 + y^2$.

$$239. \quad \text{They are proportional to } \frac{d^2x}{ds^2}, \quad \frac{d^2y}{ds^2}, \quad \text{and } \frac{d^2z}{ds^2}.$$

240. $c(x'y - y'x) + ab(z' - z) = 0$. 241. A plane passing through the line of intersection of the normal plane at the point (x, y, z) and the consecutive normal plane, and perpendicular to the first normal plane. 243. $\frac{(h^2 a^2 + k^2 z^2)^{\frac{3}{2}}}{a^2 h^2 \sqrt{(h^2 + k^2)}}$. 246. A circle.

251. The curves of greatest inclination to the plane of (x, y) are determined by the given equation combined with $x^2 - y^2 = \text{constant}$. 252. The curves are determined by the given equation combined with $x^2 - y^2 = \text{constant}$.

$$253. \quad x^2 + 3ay = 0, \quad 27acz + x^2 = 0. \quad 257. \quad 27a(x+y)^2 = 16(z-a)^2.$$

263. There are two surfaces determined by the equations

$$27a(y+z-4a)^2 = 4(x-3a)^2,$$

and

$$27a(y-z)^2 = 4(x-7a)^2.$$

The specified evolute is determined by the second equation combined with $27a(y+z+4a)^2 = 2(x-a)^2$.

$$264. \quad a + b = A + B, \quad c^2 - ab = C^2 - AB.$$

$$269. \quad z = A \tan^{-1} \frac{y}{x} + B. \quad 270. \quad \text{The surface is that formed}$$

by the revolution of the catenary $y = \frac{c}{2} (e^{\frac{x}{c}} + e^{-\frac{x}{c}})$ round the axis of x .

$$281. \quad \frac{y + \sqrt{y^2 + a^2}}{x + \sqrt{x^2 + a^2}} = \text{constant},$$

$$\{y + \sqrt{y^2 + a^2}\} \{x + \sqrt{x^2 + a^2}\} = \text{constant}.$$

$$288. \quad x = 0, \quad y = -\sqrt{a\beta - \beta^2}, \quad z = \frac{1}{2}(a - \beta); \text{ supposing } a > \beta.$$

$$299. \quad \text{The condition is } abc + 2a'b'c' - aa'^2 - bb'^2 - cc'^2 = 0.$$

302. $Aa + B\beta + C\gamma = 0$, is the equation to the plane which is parallel to the face of which the area is D , and which passes through the opposite vertex.

305. The equation represents a cone which touches the planes represented by $u_1 = 0$, $u_2 = 0$, $u_3 = 0$.

306. The equation represents a cone containing the lines of intersection of the planes $u_1 = 0$, $u_2 = 0$, $u_3 = 0$.

313. An ellipsoid, a point, or an impossible locus according as a is \geq or < 0 .

314. An hyperboloid of one sheet, a cone, or an hyperboloid of two sheets according as a is \geq or < 0 .

315. An elliptic cylinder, a straight line, or an impossible locus according as a is \geq or < 0 .

316. An hyperbolic cylinder, two planes, or an hyperbolic cylinder according as a is \geq or < 0 .

317. Two parallel planes, one plane, or an impossible locus according as a is \geq or < 0 .

318. An elliptic paraboloid. 319. An hyperbolic paraboloid. 320. A parabolic cylinder. See for the last eight questions *The Mathematician*, Vol. III. p. 195.

In examples 321—329 the symbols r , θ , ϕ are the usual polar co-ordinates. 321. A right circular cone having its vertex at the origin and its axis coincident with the axis of z . 322. A plane containing the axis of z . 323. A sphere having its centre at the origin. 324. A series of right circular cones having their vertices at the origin and their axes coincident with the axis of z . 325. A series of planes containing the axis of z . 326. A series of spheres having the origin for centre. 327. A surface of revolution round the axis of z . 328. A surface such that any section made by a plane which contains the axis of z is a circle with the origin for centre. 329. A conical surface generated by straight lines which all pass through the origin.

331. A sphere having the origin on its surface.

$$337. \pm \frac{abc}{6} \left(\frac{x}{a} + \frac{y}{b} + \frac{z}{c} - 1 \right).$$

340. Let c be a side of the hexagon, a an edge of the cube; then $a = \frac{c\sqrt{3}}{\sqrt{2}}$.

342. Let a be the edge of the cube; the height of the luminous point above the given plane is $a(2 + \sqrt{2})$.

347. The figure formed by the revolution of an hyperbola round its conjugate axis.

352. $(1 - m^2)(z^2 - c^2) = y^2 - m^2x^2$; the axes being as in Example 74.

354. The equation to the surface is

$$2cz^2 + z\{(x+y)^2 - 2c^2\} - 4cxy = 0; \text{ the volume is } \frac{83\pi c^3}{240\sqrt{2}}.$$

355. $y \pm z = 0.$ 359. $z^2 = 2(x^2 + y^2).$

360. $\frac{D^2}{s^2} = \frac{(a-r)(r-b)}{r^2}, \quad c = \frac{ab}{a+b-r}.$

363. $x^{a^2} = ky^{b^2}$, and $x^2 + y^2 + z^2 = \log(k'y^{2b^2}).$

380. $(x^2 + y^2 + z^2)^3 = 6c^3xyz$ where c^3 is the constant volume.

383. $c^3xyz = a^3(x^2 + y^2).$ 384. Hyperbolic paraboloid.

389. The volume is $\frac{\pi a^3}{1b}.$

392. $\left(\frac{x}{a} + \frac{y}{b} + \frac{z}{c} - 1\right)^2 = 2\left(\frac{x^2}{a^2} + \frac{y^2}{b^2} + \frac{z^2}{c^2} - 1\right).$

393. The origin; the locus is the axis of $z.$

398. $4c^2\left(\frac{x^2}{a^2} + \frac{y^2}{b^2}\right) + x^2 + y^2 = l^2$, where $2l$ is the length of the straight line, and $\frac{x^2}{a^2} + \frac{y^2}{b^2} = \frac{z^2}{c^2}$ the equation to the given cone.

405. The longest axis of the ellipsoid must be inclined to the plane at an angle whose cosine is $\left(\frac{b^2 - c^2}{a^2 - c^2}\right)^{\frac{1}{2}}.$

406. $y^2\{\phi(z)\}^2 = \{x - \phi(z)\}^2 [c^2 - \{\phi(z)\}^2].$

408. $x\{a(a^2 + b^2 + c^2) - a(aa + b\beta + c\gamma)\} + \dots = 0.$

409. $\frac{x}{b\gamma - c\beta} = \&c.$; co-ordinates those given in the result of Example 45.

410. Let a be the edge, p the distance of the section from one corner. Then from $p = 0$ to $p = \frac{a}{\sqrt{3}}$ the section is

an equilateral triangle; the perimeter is $3p\sqrt{6}$ and the area $\frac{p^2 3\sqrt{3}}{2}$.

From $p = \frac{a}{\sqrt{3}}$ to $p = \frac{2a}{\sqrt{3}}$ the section is a hexagon having three sides equal and also the other three sides equal; the perimeter is $3p\sqrt{6} - 3\sqrt{2}(p\sqrt{3} - a)$, that is $3a\sqrt{2}$, and the area is $\frac{p^2 3\sqrt{3}}{2} - 3\{\sqrt{2}(p\sqrt{3} - a)\}^2 \frac{\sqrt{3}}{4}$, that is $9ap - 3p^2\sqrt{3} - \frac{3a^2\sqrt{3}}{2}$.

From $p = \frac{2a}{\sqrt{3}}$ to $p = a\sqrt{3}$ the results may be obtained from those in the first case by putting $a\sqrt{3} - p$ instead of p . The area is greatest when $p = \frac{a\sqrt{3}}{2}$.

$$415. \quad p^2 = l^2 a^2 + m^2 b^2 - n^2 c^2.$$

$$418. \quad lz = x^2 - y^2.$$

421. Two planes.

$$422. \quad \frac{(x-a)^2}{a^2} + \frac{(y-\beta)^2}{b^2} + \frac{(z-\gamma)^2}{c^2} = 1 - \frac{p^2}{a^2 l^2 + b^2 m^2 + c^2 n^2}.$$

$$424. \quad \frac{\pi abc p^3}{(l^2 a^2 + m^2 b^2 - n^2 c^2)^{\frac{3}{2}}}.$$

$$425. \quad \frac{\pi abc p^3}{3(l^2 a^2 + m^2 b^2 - n^2 c^2)^{\frac{3}{2}}}.$$

$$426. \quad \text{Volume is } \frac{\pi abc}{3}.$$

$$436. \quad z = x \phi(lx + my + nz) + \psi(lx + my + nz).$$

$$438. \quad z^2 = \frac{2axy}{(x^2 + y^2)^{\frac{1}{2}}} - x^2 - y^2.$$

439. Surface of revolution

formed by revolving a circle about a straight line in its plane.

Cambridge Elementary Class Books.

AN ELEMENTARY LATIN GRAMMAR.

By H. J. ROBY, M.A.

Under Master of Dulwich College Upper School, late Fellow and Classical Lecturer of St John's College, Cambridge.

18mo. 2s. 6d.

THE Author's experience in practical teaching has induced him to treat Latin Grammar in a more precise and intelligible way than has been usual in school books. The facts have been derived from the best authorities, especially Madvig's Grammar and other works. The works also of Lachmann, Ritschl, Key, and others have been consulted on special points. The accent and prosody have been simplified and restricted to what is really required by boys. In the Syntax an analysis of sentences has been given, and the uses of the different cases, tenses and moods briefly but carefully described. Particular attention has been paid to a classification of the uses of the subjunctive mood, to the prepositions, the *oratio obliqua*, and such sentences as are introduced by the English 'that.' Appendices treat of the Latin forms of Greek nouns, abbreviations, dates, money, &c. The Grammar is written in English.

Strongly bound in cloth, price 4s. 6d.

LESSONS IN ELEMENTARY BOTANY.

THE PART ON SYSTEMATIC BOTANY BASED UPON MATERIAL LEFT IN MANUSCRIPT BY THE LATE PROFESSOR HENSLow.

WITH NEARLY TWO HUNDRED ILLUSTRATIONS.

By DANIEL OLIVER, F.R.S. F.L.S.

Keeper of the Herbarium and Library of the Royal Gardens, Kew, and Professor of Botany in University College, London.

"As a simple introduction to botany for beginners this little volume appears to be almost unrivalled. It is written with a clearness which shows Professor Oliver to be a master of exposition.....No one would have thought that so much thoroughly correct botany could have been so simply and happily taught in one volume."—*Professor Asa Gray, in the American Journal of Science and Arts.*

MYTHOLOGY FOR VERSIFICATION.

A Brief Sketch of the Fables of the Ancients, prepared to be rendered into Latin Verse for Schools.

By THE REV. F. HODGSON, B.D.

Late Provost of Eton College.

New Edition, revised by F. C. HODGSON, M.A. Fellow of King's College, Cambridge.

18mo. 3s.

The Author here offers to those who are engaged in Classical Education a further help to the composition of Latin Verse, combined with a brief introduction to an essential part of the study of the Classics. The Author has made it as easy as he could so that a boy may get rapidly through these preparatory exercises: and thus having mastered the first difficulties, he may advance with better hopes of improvement to subjects of higher character and verses of more difficult composition.

SCHOOL CLASS BOOK OF ARITHMETIC.

By BARNARD SMITH, M.A.

18mo. in strong limp cloth. Part I. to the end of Compound Division. Price 10d.
Parts II. and III. will be published immediately.

The School Class Book of Arithmetic published at the request of many Schoolmasters, and chiefly intended for National and Elementary Schools, has been prepared on the same plan as that adopted in the Author's *School Arithmetic* which is in extensive circulation in England and abroad.

It contains a complete set of Metrical Tables in accordance with the recent Act of Parliament. With numerous Examples to educate the Pupils to familiarity with the system.

THE BIBLE IN THE CHURCH:

A POPULAR ACCOUNT OF THE COLLECTION AND RECEPTION
OF THE HOLY SCRIPTURES IN THE CHRISTIAN CHURCHES.

By BROOKE FOSS WESTCOTT, M.A.

Formerly Fellow of Trinity College, Cambridge.

18mo. cloth, 4s. 6d.

This work has been drawn up by the Author, at the request of many readers of his *History of the Canon of the New Testament*, to place the substance of that work in a simple form which could be used in Schools and by general readers. He has endeavoured to make the book as complete as the limits would allow; every technical term is explained when it first occurs, and the addition of slight historical characteristics of men or ages will enable the reader to appreciate fairly the relative importance of the evidence they contribute.

ELEMENTARY HISTORY OF THE BOOK OF COMMON PRAYER.

For the Use of Schools and popular reading.

By FRANCIS PROCTER, M.A.

Vicar of Witton, Norfolk, late Fellow of St Catharine's College, Cambridge.

18mo. cloth. 2s. 6d.

The Author having been frequently urged to give a popular abridgment of his larger work in a form which should be suited for use in Schools and for general readers, has attempted in this book to trace the History of the Prayer-Book, and to supply to the English reader the general results which in the larger work are accompanied by elaborate discussions and references to authorities indispensable to the student. It is hoped that this book may form a useful manual to assist people generally to a more intelligent use of the Forms of our Common Prayer.

Books Suitable for School Prizes.

THE GOLDEN TREASURY OF THE BEST SONGS AND LYRICAL POEMS IN THE ENGLISH LANGUAGE. Selected and arranged by F. T. PALGRAVE. 18mo. cloth, 4s. 6d. Morocco plain, 7s. 6d. Morocco extra, 10s. 6d.

THE BOOK OF PRAISE. From the best English Hymn-Writers. Selected and arranged by ROUNDELL PALMER. 18mo. cloth, 4s. 6d. Morocco plain, 7s. 6d. Morocco extra, 10s. 6d.

BACON'S ESSAYS AND COLOURS OF GOOD AND EVIL. With Notes and Glossarial Index. By W. ALDIS WRIGHT, M.A. 18mo. cloth, 4s. 6d. Morocco plain, 7s. 6d. Morocco extra, 10s. 6d.

THE PILGRIM'S PROGRESS. From this World to that which is to Come. By JOHN BUNYAN. 18mo. cloth, 4s. 6d. Morocco plain, 7s. 6d. Morocco extra, 10s. 6d.

ON THE STUDY OF WORDS. By RICHARD CHENEVIX TRENCH, D.D. Archbishop of Dublin. Eleventh Edition, fcp. 8vo. cloth, 4s.

ENGLISH PAST AND PRESENT. By R. C. TRENCH, D.D. Archbishop of Dublin. Fifth Edition, fcp. 8vo. 4s.

ESSAYS BY THE LATE GEORGE BRIMLEY, M.A. With Portrait. Second Edition, fcp. 8vo. cloth, 5s.

WESTWARD HO! By the Rev. PROFESSOR KINGSLEY. Crown 8vo. 6s.

TOM BROWN'S SCHOOL DAYS. Fcp. 8vo. 5s.

TOM BROWN AT OXFORD. By the Author of "Tom Brown's School Days." New Edition, Crown 8vo. 6s.

PAUL'S PICTURES OF OLD ENGLAND. Crown 8vo. cloth, 8s. 6d.

MACMILLAN AND Co. LONDON AND CAMBRIDGE.

Books Suitable for School Prizes.

THE WATER BABIES. By the Rev. PROFESSOR KINGSLEY. With Two Illustrations by J. Noel Paton, R.S.A. New Edition, Crown 8vo. 6s.

THE FAIRY BOOK: The best Popular Fairy Tales. Selected and Rendered anew by the Author of "John Halifax." With a Vignette by NOEL PATON. 18mo. cloth, 4s. 6d. Morocco plain, 7s. 6d. Morocco extra, 10s. 6d.

THE CHILDREN'S GARLAND, from the best Poets. Selected and arranged by COVENTRY PATMORE. With a Vignette by J. WOOLNER. 18mo. cloth, 4s. 6d. Morocco plain, 7s. 6d. Morocco extra, 10s. 6d.

THE LANCES OF LYNWOOD. By the Author of "The Heir of Redclyffe." With Illustrations by J. B. New Edition, price 3s. 6d.

THE HEROES; OR, GREEK FAIRY TALES. By the Rev. PROFESSOR KINGSLEY. With Eight Illustrations. Third Edition, cloth, gilt leaves, 3s. 6d.

RUTH AND HER FRIENDS. A Story for Girls. Fourth Edition. Cloth, gilt leaves, 3s. 6d.

DAYS OF OLD. Stories from Old English History. By the Author of "Ruth and her Friends." Cloth, gilt leaves, 3s. 6d.

AGNES HOPETOUN'S SCHOOLS AND HOLIDAYS. By Mrs OLIPHANT. Cloth, gilt leaves, 3s. 6d.

LITTLE ESTELLA, and other TALES for the YOUNG. Cloth, gilt leaves, 3s. 6d.

DAVID, KING OF ISRAEL; a History for the Young. By J. WRIGHT. Cloth, gilt leaves, 3s. 6d.

MY FIRST JOURNAL. By GEORGIANA M. CRAIK. Cloth, gilt leaves, 3s. 6d.

EARLY EGYPTIAN HISTORY for the YOUNG. New Edition, with Frontispiece, fcp. 8vo. cloth, 5s.

MACMILLAN AND CO. LONDON AND CAMBRIDGE.

16, BEDFORD STREET, COVENT GARDEN, W.C.
London and Cambridge.

MACMILLAN AND CO.'S

DESCRIPTIVE CATALOGUE OF

CAMBRIDGE CLASS BOOKS.

The Works in this Series of CAMBRIDGE CLASS-BOOKS FOR THE USE OF SCHOOLS AND COLLEGES, which have been issued at intervals during the last ten years, are intended to embrace all branches of Education, from the most Elementary to the most Advanced, and to keep pace with the latest discoveries in Science.

Of those hitherto published the large and ever increasing sale is a sufficient indication of the manner in which they have been appreciated by the public.

A SERIES of a more Elementary character is in course of publication, a list of which will be found on page 2 of this Catalogue.

2000 :
2 : 27 : 65.

ELEMENTARY SCHOOL CLASS BOOKS.

The volumes of this Series of ELEMENTARY SCHOOL CLASS BOOKS are handsomely printed in a form that, it is hoped, will assist the young student as much as clearness of type and distinctness of arrangement can effect. They are published at a moderate price to ensure an extensive sale in the Schools of the United Kingdom and the Colonies.

1. **EUCLID FOR COLLEGES AND SCHOOLS.**
By I. TODHUNTER, M.A., F.R.S., Fellow and Principal Mathematical Lecturer of St. John's College, Cambridge. 18mo. 3s. 6d.
2. **ALGEBRA FOR BEGINNERS.**
By I. TODHUNTER, M.A., F.R.S. 18mo. 2s. 6d.
* * * A KEY to this work will shortly be published.
3. **THE SCHOOL CLASS BOOK OF ARITHMETIC.**
By BARNARD SMITH, M.A., late Fellow of St. Peter's College, Cambridge. Parts I. and II. are now ready. 18mo. limp cloth, price 10d. each.
4. **AN ELEMENTARY LATIN GRAMMAR.**
By H. J. ROBY, M.A., Under Master of Dulwich College Upper School, late Fellow and Classical Lecturer of St. John's College, Cambridge. 18mo. 2s. 6d.
5. **MYTHOLOGY FOR LATIN VERSIFICATION.**
A Brief Sketch of the Fables of the Ancients, prepared to be rendered into Latin Verse for Schools. By F. HODGSON, B.D., late Provost of Eton College. *New Edition.* Revised by F. C. HODGSON, M.A., Fellow of King's College, Cambridge. 18mo. 3s.
6. **A LATIN GRADUAL FOR BEGINNERS.**
A First Latin Construing Book. By EDWARD THRING, M.A., Head Master of Uppingham School. 18mo. 2s. 6d.
7. **SHAKESPEARE'S TEMPEST.**
The Text taken from "The Cambridge Shakespeare." With Glossarial and Explanatory Notes. By the Rev. J. M. JERRISON. 18mo. cloth, 3s. 6d.
8. **LESSONS IN ELEMENTARY BOTANY.**
The Part on Systematic Botany based upon Material left in Manuscript by the late Professor HENSLOW. With nearly Two Hundred Illustrations. By DANIEL OLIVER, F.R.S., F.L.S., Keeper of the Herbarium and Library of the Royal Gardens, Kew, and Professor of Botany in University College, London. 18mo. cloth. 4s. 6d.
9. **AN ELEMENTARY HISTORY OF THE BOOK OF COMMON PRAYER.** By FRANCIS PROCTER, M.A., Vicar of Witton, Norfolk, late Fellow of St. Catharine's College, Cambridge. 18mo. 2s. 6d.
10. **THE BIBLE IN THE CHURCH.**
A Popular Account of the Collection and Reception of the Holy Scriptures in the Christian Churches. By BROOKE FOSS WESTCOTT, M.A., 18mo. 4s. 6d.
11. **THE BIBLE WORD BOOK.**
A Glossary of Old English Bible Words. By J. EASTWOOD, M.A., of St. John's College, and W. ALDIS WRIGHT, M.A., Trinity College, Cambridge. [In the Press.]
12. **A BRIEF BIOGRAPHICAL DICTIONARY FOR THE USE OF SCHOOLS.** By the Rev. CHARLES HOLE. [In the Press.]
13. **LESSONS IN ELEMENTARY PHYSIOLOGY.**
With numerous Illustrations. By T. H. HUXLEY, F.R.S., Professor of Natural History in the Government School of Mines. [Nearly Ready, in 18mo.]

CAMBRIDGE CLASS BOOKS

FOR

SCHOOLS AND COLLEGES.

WORKS by the Rev. BARNARD SMITH, M.A.

Fellow of St. Peter's College, Cambridge.

1.

Arithmetic & Algebra

In their Principles and Applications.

With numerous Examples, systematically arranged.

Ninth Edit. 696 pp. (1863). Cr. 8vo. strongly bound in cloth. 10s. 6d.

The first edition of this work was published in 1854. It was primarily intended for the use of students at the Universities, and for Schools which prepare for the Universities. It has however been found to meet the requirements of a much larger class, and is now extensively used in *Schools and Colleges both at home and in the Colonies*. It has also been found of great service for students preparing for the MIDDLE-CLASS and CIVIL AND MILITARY SERVICE EXAMINATIONS, from the care that has been taken to elucidate the *principles* of all the Rules. Testimony of its excellence has been borne by some of the highest practical and theoretical authorities; of which the following from the late DEAN PEACOCK may be taken as a specimen:

"Mr. Smith's Work is a most useful publication. The Rules are stated with great clearness. The Examples are well selected and worked out with just sufficient detail without being encumbered by too minute explanations; and there prevails throughout it that just proportion of theory and practice, which is the crowning excellence of an elementary work."

2. Arithmetic

For the Use of Schools.

New Edition (1862) 348 pp. Crown 8vo. strongly bound in cloth, 4s. 6d. Answers to all the Questions.

3. **Key to the Arithmetic**, containing Solutions to all the Questions in the latest Edition. Cr. 8vo. cloth. 392 pp. Third Edit. 8s. 6d.

To meet a widely expressed wish, the ARITHMETIC was published separately from the larger work in 1854, with so much alteration as was necessary to make it quite independent of the ALGEBRA. It has now a very large sale in all classes of Schools at home and in the Colonies. A copious collection of Examples, under each rule, has been embodied in the work in a systematic order, and a Collection of Miscellaneous Papers in all branches of Arithmetic is appended to the book.

4. **Exercises in Arithmetic**. 104 pp. Cr. 8vo. (1860)

2s. Or with **Answers**, 2s. 6d.

Also sold separately in 2 Parts 1s. each. **Answers**, 6d.

These EXERCISES have been published in order to give the pupil examples in every rule of Arithmetic. The greater number have been carefully compiled from the latest University and School Examination Papers.

5. School Class Book of Arithmetic.

1864. 124 pp. PART I. to the end of Compound Division. 18mo. limp cloth. 10d.—PART II. 104 pp. containing Fractions, Decimals, Subtraction of Square and Cube Root. 18mo. limp cloth. 10d.—PART III. will contain Rule of Three, Interest, &c.

The School Class Book of Arithmetic, published at the request of many Schoolmasters, and chiefly intended for National and Elementary Schools, has been prepared on the same plan as that adopted in the *Author's School Arithmetic*, which is in extensive circulation in England and abroad.

WORKS by ISAAC TODHUNTER, M.A. F.R.S.

Fellow and Principal Mathematical Lecturer of St. John's College, Cambridge.

1. Algebra.

For the Use of Colleges and Schools.

Third Edition. 542 pp. (1862).
Strongly bound in cloth. 7s. 6d.

This work contains all the propositions which are usually included in elementary treatises on Algebra, and a large number of *Examples for Exercise*. The author has sought to render the work easily intelligible to students without impairing the accuracy of the demonstrations, or contracting the limits of the subject. The *Examples* have been selected with a view to illustrate every part of the subject, and as the number of them is about *Sixteen hundred and fifty*, it is hoped they will supply ample exercise for the student. Each set of *Examples* has been carefully arranged, commencing with very simple exercises, and proceeding gradually to those which are less obvious.

2. Plane Trigonometry

For Schools and Colleges.

2nd Edit. 279 pp. (1860). Crn. 8vo.
Strongly bound in cloth. 5s.

The design of this work has been to render the subject intelligible to beginners, and at the same time to afford the student the opportunity of obtaining all the information which he will require on this branch of Mathematics. Each chapter is followed by a set of *Examples*; those which are entitled *Miscellaneous Examples*, together with a few in some of the other sets, may be advantageously reserved by the student for exercise after he has made some progress in the subject. As the *Text* and *Examples* have been tested by considerable experience in teaching, the hope is entertained that they will be suitable for imparting a sound and comprehensive knowledge of Plane Trigonometry, together with readiness in the application of this knowledge to the solution of problems. In the Second Edition the hints for the solution of the *Examples* have been considerably increased.

3. Spherical Trigonometry.

For the Use of Colleges and Schools.

132 pp. Crown 8vo. Second Edit.
enlarged. (1863). 4s. 6d.

This work is constructed on the same plan as the *Treatise on Plane Trigonometry*, to which it is intended as a sequel. Considerable labour has been expended on the text in order to render it comprehensive and accurate, and the *Examples*, which have been chiefly selected from University and College Papers, have all been carefully verified.

The Elements of Euclid

For the Use of Schools and Colleges.

COMPRISING THE FIRST SIX BOOKS AND PORTIONS OF THE ELEVENTH AND TWELFTH BOOKS, WITH NOTES, APPENDIX, AND EXERCISES.

384 pp. 18mo. bound. (1862). 3s. 6d.

As the *Elements of Euclid* are usually placed in the hands of young students, it is important to exhibit the work in such a form as will assist them in overcoming the difficulties which they experience on their first introduction to processes of continuous argument. No method appears to be so useful as that of breaking up the demonstrations into their constituent parts, and this plan has been adopted in the present edition. Each distinct assertion in the argument begins a new line; and at the end of the lines are placed the necessary references to the preceding principles on which the assertions depend. The longer propositions are distributed into subordinate parts, which are distinguished by breaks at the beginning of the lines. The *Notes* are intended to indicate and explain the principal difficulties, and to supply the most important inferences which can be drawn from the propositions. The work finishes with a collection of *Six hundred and twenty-five Exercises*, which have been selected principally from Cambridge Examination papers and have been tested by long experience. As far as possible they are arranged in order of difficulty. The *Figures* will be found to be large and distinct, and have been repeated when necessary, so that they always occur in immediate connexion with the corresponding text.

WORKS by ISAAC TODHUNTER, M.A., F.R.S.—continued.

5.

The Integral Calculus*And its Applications.*

With numerous Examples.

Second Edition. 342 pp. (1862).

Crown 8vo. cloth. 10s. 6d.

In writing the present *Treatise on the Integral Calculus*, the object has been to produce a work at once elementary and complete—adapted for the use of beginners, and sufficient for the wants of advanced students. In the selection of the propositions, and in the mode of establishing them, the author has endeavoured to exhibit fully and clearly the principles of the subject, and to illustrate all their most important results. In order that the student may find in the volume all that he requires, a large collection of Examples for exercise has been appended to the different chapters.

6. Analytical Statics.

With numerous Examples.

Second Edition. 330 pp. (1858).

Crown 8vo. cloth. 10s. 6d.

In this work will be found all the propositions which usually appear in treatises on Theoretical Statics. To the different chapters Examples are appended, which have been selected principally from the University and College Examination Papers; these will furnish ample exercise in the application of the principles of the subject.

7. EXAMPLES OF

**Analytical Geometry
of Three Dimensions.**

76 pp. (1858). Crn. 8vo. cloth. 4s.

A collection of examples in illustration of Analytical Geometry of Three Dimensions has long been required both by students and teachers, and the present work is published with the view of supplying the want.

8. The

Differential Calculus.*With numerous Examples.*

Third Edition, 398 pp. (1860).

Crown 8vo. cloth, 10s. 6d.

This work is intended to exhibit a comprehensive view of the Differential Calculus on the method of Limits. In the more elementary portions, explanations have been given in considerable detail, with the hope that a reader who is without the assistance of a tutor may be enabled to acquire a competent acquaintance with the subject. More than one investigation of a theorem has been frequently given, because it is believed that the student derives advantage from viewing the same proposition under different aspects, and that in order to succeed in the examinations which he may have to undergo, he should be prepared for a considerable variety in the order of arranging the several branches of the subject, and for a corresponding variety in the mode of demonstration.

9. Plane Co-Ordinate
GeometryAS APPLIED TO THE STRAIGHT LINE
AND THE CONIC SECTIONS.*With numerous Examples.*

Third and Cheaper Edition.

Crn. 8vo. cl. 326 pp. (1862). 7s. 6d.

This *Treatise* exhibits the subject in a simple manner for the benefit of beginners, and at the same time includes in one volume all that students usually require. The Examples at the end of each chapter will, it is hoped, furnish sufficient exercise, as they have been carefully selected with the view of illustrating the most important points, and have been tested by repeated experience with pupils. In consequence of the demand for the work proving much greater than had been originally anticipated, a large number of copies of the *Third Edition* has been printed, and a considerable reduction effected in the price.

By ISAAC TODHUNTER, M.A.

10.

**AN ELEMENTARY TREATISE ON THE
Theory of Equations.***With a Collection of Examples.*Crown 8vo. cloth. 279 pp. (1861).
7s. 6d.

This treatise contains all the propositions which are usually included in elementary treatises on the Theory of Equations, together with a collection of Examples for exercise. This work may in fact be regarded as a sequel to that on Algebra by the same writer, and accordingly the student has occasionally been referred to the treatise on Algebra for preliminary information on some topics here discussed. The work includes three chapters on Determinants.

11.

**History of the Progress
of the
Calculus of Variations***During the Nineteenth Century.*

8vo. cloth. 532 pp. (1861). 12s.

It is of importance that those who wish to cultivate any subject may be able to ascertain what results have already been obtained, and thus reserve their strength for difficulties which have not yet been conquered. The Author has endeavoured in this work to ascertain distinctly what has been effected in the Progress of the Calculus, and to form some estimate of the manner in which it has been effected.

12.

Algebra for Beginners.

18mo. cloth, 264 pp. (1863). 2s. 6d.

Great pains have been taken to render this work intelligible to young students by the use of simple language and by copious explanations. In accordance with the recommendation of teachers, the examples for exercise are very numerous.

By J. H. PRATT, M.A.

Archdeacon of Calcutta, late Fellow of
Gonville and Caius College, Cambridge.**A Treatise on
Attractions,***La Place's Functions, and the Figure
of the Earth.*Second Edition. Crown 8vo. 126 pp.
(1861). Cloth. 6s. 6d.

In the present Treatise the author has endeavoured to supply the want of a work on a subject of great importance and high interest—La Place's Coefficients and Functions and the calculation of the Figure of the Earth by means of his remarkable analysis. No student of the higher branches of Physical Astronomy should be ignorant of La Place's analysis and its result—"a calculus," says Airy, "the most singular in its nature and the most powerful in its application that has ever appeared."

**Theory of Errors of
Observations***And the Combination of Observations.*

By G. B. AIRY, M.A.

Astronomer Royal.

103 pp. (1861). Crown 8vo. 6s. 6d.

In order to spare astronomers and observers in natural philosophy the confusion and loss of time which are produced by referring to the ordinary treatises embracing both branches of Probabilities, the author has thought it desirable to draw up this work, relating only to Errors of Observation, and to the rules derivable from the consideration of these Errors, for the Combination of the Results of Observations. The Author has thus also the advantage of entering somewhat more fully into several points of interest to the observer, than can possibly be done in a General Theory of Probabilities.

**AN ELEMENTARY TREATISE ON
The Planetary Theory.**

WITH A COLLECTION OF PROBLEMS.

By C. H. H. CHEYNE, B.A.

Scholar of St. John's College, Cambridge.
148 pp. 1862. Crn. 8vo. cloth. 6s. 6d.

By **GEORGE BOOLE, D.C.L., F.R.S.**
Professor of Mathematics in the Queen's
University, Ireland.

Differential Equations

468 pp. (1859). Crn. 8vo. cloth. 14s.

The Author has endeavoured in this treatise to convey as complete an account of the present state of knowledge on the subject of Differential Equations as was consistent with the idea of a work intended, primarily, for elementary instruction. The object has been first of all to meet the wants of those who had no previous acquaintance with the subject, and also not quite to disappoint others who might seek for more advanced information. The earlier sections of each chapter contain that kind of matter which has usually been thought suitable for the beginner, while the latter ones are devoted either to an account of recent discovery, or to the discussion of such deeper questions of principle as are likely to present themselves to the reflective student in connection with the methods and processes of his previous course.

2. The Calculus of Finite Differences.

248 pp. (1860). Crown 8vo. cloth.
10s. 6d.

In this work particular attention has been paid to the connexion of the methods with those of the Differential Calculus—a connexion which in some instances involves far more than a merely formal analogy. The work is in some measure designed as a sequel to the Author's *Treatise on Differential Equations*, and it has been composed on the same plan.

Elementary Statics.

By the Rev. **GEORGE RAWLINSON**,
Professor of Applied Sciences, Elphin-
stone Coll., Bombay.

Edited by the Rev. **E. STURGES, M.A.**
Rector of Kenecott, Oxfordshire.

(150 pp.) 1860. Crn. 8vo. cl. 4s. 6d.

This work is published under the authority of H. M. Secretary of State for India for use in the Government Schools and Colleges in India.

By **P. G. TAIT, M.A.**, and
W. J. STEELE, B.A.

Late Fellows of St. Peter's Coll. Camb.

Dynamics of a Particle.

With numerous Examples.

304 pp. (1856). Cr. 8vo. cl. 10s. 6d.

In this Treatise will be found all the ordinary propositions connected with the Dynamics of Particles which can be conveniently deduced without the use of D'Alembert's Principles. Throughout the book will be found a number of illustrative Examples introduced in the text, and for the most part completely worked out; others, with occasional solutions or hints to assist the student are appended to each Chapter.

By the Rev. **G. F. CHILDE, M.A.**

Mathematical Professor in the South
African College.

Singular Properties of the Ellipsoid

*And Associated Surfaces of the nth
Degree.*

152 pp. (1861). 8vo. boards. 10s. 6d.

As the title of this volume indicates, its object is to develop peculiarities in the Ellipsoid; and further, to establish analogous properties in unlimited congeneric series of which this remarkable surface is a constituent.

By **J. B. PHEAR, M.A.**

Fellow and late Mathematical Lecturer of
Clare College.

Elementary Hydrostatics

*With numerous Examples and
Solutions.*

Third Edition. 156 pp. (1863).
Crown 8vo. cloth. 5s. 6d.

"An excellent Introductory Book. The definitions are very clear; the descriptions and explanations are sufficiently full and intelligible; the investigations are simple and scientific. The examples greatly enhance its value."—**ENGLISH JOURNAL OF EDUCATION.**

This Edition contains 147 Examples, and solutions to all these examples are given at the end of the book.

By *Rev. S. PARKINSON, B.D.*

Fellow and Prælector of St. John's Coll.
Cambridge.

1. **Elementary Treatise on Mechanics.**

With a Collection of Examples.

Third Edition revised and enlarged,
374 pp. (1863). Crn. 8vo. cl. 9s. 6d.

The Author has endeavoured to render the present volume suitable as a Manual for the junior classes in Universities and the higher classes in Schools. With this object there have been included in it those portions of theoretical Mechanics which can be conveniently investigated without the Differential Calculus, and with one or two short exceptions the student is not presumed to require a knowledge of any branches of Mathematics beyond the elements of Algebra, Geometry, and Trigonometry. A collection of Problems and Examples has been added, chiefly taken from the Senate-House and College Examination Papers—which will be found useful as an exercise for the student. In the Second Edition several additional propositions have been incorporated in the work for the purpose of rendering it more complete, and the Collection of Examples and Problems has been largely increased.

2. **A Treatise on Optics**

304 pp. (1859). Crown 8vo. 10s. 6d.

A collection of Examples and Problems has been appended to this work which are sufficiently numerous and varied in character to afford useful exercise for the student: for the greater part of them recourse has been had to the Examination Papers set in the University and the several Colleges during the last twenty years.

Subjoined to the copious Table of Contents the author has ventured to indicate an elementary course of reading not unsuitable for the requirements of the First Three Days in the Cambridge Senate House Examinations.

By *R. D. BEASLEY, M.A.*

Head Master of Grantham School.

AN ELEMENTARY TREATISE ON **Plane Trigonometry.**

*With a numerous Collection of
Examples.*

106 pp. (1858), strongly bound in
cloth. 3s. 6d.

This Treatise is specially intended for use in Schools. The choice of matter has been chiefly guided by the requirements of the three days' Examination at Cambridge, with the exception of proportional parts in logarithms, which have been omitted. About *Four hundred Examples* have been added, mainly collected from the Examination Papers of the last ten years, and great pains have been taken to exclude from the body of the work any which might dishearten a beginner by their difficulty.

By *J. BROOK SMITH, M.A.*

St. John's College, Cambridge.

Arithmetic in Theory and Practice.

For Advanced Pupils.

PART I. Crown 8vo. cloth. 3s. 6d.

This work forms the first part of a Treatise on Arithmetic, in which the Author has endeavoured, from very simple principles, to explain in a full and satisfactory manner all the important processes in that subject.

The proofs have in all cases been given in a form entirely arithmetical: for the author does not think that recourse ought to be had to Algebra until the arithmetical proof has become hopelessly long and perplexing.

At the end of every chapter several examples have been worked out at length, in which the best practical methods of operation have been carefully pointed out.

By *G. H. PUCKLE, M.A.*
Principal of Windermere College.

Conic Sections and Algebraic Geometry.

With numerous Easy Examples Progressively arranged.

Second Edit. enlarged and improved, 264 pp. (1856). Crown 8vo. 7s. 6d.

This book has been written with special reference to those difficulties and misapprehensions which commonly beset the student when he commences. With this object in view, the earlier part of the subject has been dwelt on at length, and geometrical and numerical illustrations of the analysis have been introduced. The Examples appended to each section are mostly of an elementary description. The work will, it is hoped, be found to contain all that is required by the upper classes of schools and by the generality of students at the Universities.

By *EDWARD JOHN ROUTH, M.A.*
Fellow and Assistant Tutor of St. Peter's College, Cambridge.

Dynamics of a System of Rigid Bodies.

With numerous Examples.

336 pp. (1860). Crown 8vo. cloth. 10s. 6d.

CONTENTS: Chap. I. Of Moments of Inertia.—II. D'Alembert's Principle.—III. Motion about a Fixed Axis.—IV. Motion in Two Dimensions.—V. Motion of a Rigid Body in Three Dimensions.—VI. Motion of a Flexible String.—VII. Motion of a System of Rigid Bodies.—VIII. Of Impulsive Forces.—IX. Miscellaneous Examples.

The numerous Examples which will be found at the end of each chapter have been chiefly selected from the Examination Papers set in the University and Colleges of Cambridge during the last few years.

THE CAMBRIDGE COURSE OF Elementary Natural Philosophy.

BEING THE PROPOSITIONS IN MECHANICS AND HYDROSTATICS

In which those persons who are not Candidates for Honours are examined for the Degree B.A.

ORIGINALLY COMPILED

By *J. C. SNOWBALL, M.A.*,
Late Fellow of St. John's College.

Fifth Edition, Revised and Enlarged, and adapted for the Middle-Class Examinations.

By *THOMAS LUND, B.D.*,
Late Fellow and Lecturer of St. John's College. Editor of Wood's Algebra. &c.

155 pp. New Edition (1864).
Crown 8vo. cloth. 5s.

This work will be found suited to the wants, not only of University Students, but also of many others who require a short course of Mechanics and Hydrostatics, and especially of the Candidates at our Middle-Class Examinations.

By *N. M. FERRERS, M.A.*
Fellow and Mathematical Lecturer of Gonville and Caius College, Cambridge.

AN ELEMENTARY TREATISE ON Trilinear Co-Ordinates

The Method of Reciprocal Polars, and the Theory of Projections.

154 pp. (1161). Cr. 8vo. cl. 6s. 6d.

The object of the Author in writing on this subject has mainly been to place it on a basis altogether independent of the ordinary Cartesian System, instead of regarding it as only a special form of abridged Notation. A short chapter on Determinants has been introduced.

By J. C. SNOWBALL, M.A.

Late Fellow of St. John's Coll. Cambridge.

Plane and Spherical Trigonometry.

*With the Construction and Use of
Tables of Logarithms.*

Tenth Edition. 240 pp. (1863).
Crown 8vo. 7s. 6d.

In preparing a new edition, the proofs of some of the more important propositions have been rendered more strict and general; and a considerable addition of more than *Two Hundred Examples*, taken principally from the questions in the Examinations of Colleges and the University, has been made to the collection of Examples and Problems for practice.

By W. H. DREW, M.A.

Second Master of Blackheath School.

Geometrical Treatise on Conic Sections.

With a copious Collection of Examples.

Third Edition. Crown 8vo. cloth.
4s. 6d.

In this work the subject of Conic Sections has been placed before the student in such a form that, it is hoped, after mastering the elements of Euclid, he may find it an easy and interesting continuation of his geometrical studies. With a view also of rendering the work a complete Manual of what is required at the Universities, there have been either embodied into the text, or inserted among the examples, every book work question, problem, and rider, which has been proposed in the Cambridge examinations up to the present time.

Solutions to the Problems in Drew's Conic Sections.

Crown 8vo. cloth. 4s. 6d.

Senate-House Mathematical Problems.

With Solutions.

1849-51. By FERRERS and JACKSON. 8vo.
15s. 6d.

1848-51. (RIDERS). By JAMESON. 8vo.
7s. 6d.

1854. By WALTON and MACKENZIE.
10s. 6d.

1857. By CAMPION and WALTON. 8vo.
8s. 6d.

1860. By ROUTH and WATSON. Crown
8vo. 7s. 6d.

1864. By WALTON and WILKINSON. 8vo.
cloth. 10s. 6d.

The above books contain Problems and Examples which have been set in the Cambridge Senate-house Examinations at various periods during the last twelve years, together with Solutions of the same. The Solutions are in all cases given by the Examiners themselves or under their sanction.

By H. A. MORGAN, M.A.

Fellow of Jesus College, Cambridge.

A Collection of Mathematical Problems and Examples.

With Answers.

190 pp. (1868). Crown 8vo. 6s. 6d.

This book contains a number of problems, chiefly elementary, in the Mathematical subjects usually read at Cambridge. They have been selected from the papers set during late years at Jesus College. Very few of them are to be met with in other collections, and by far the larger number are due to some of the most distinguished Mathematicians in the University.

By C. TAYLOR, B.A.

Scholar of St. John's College, Cambridge.

Geometrical Conics.

Including Anharmonic Ratio and Projection. With numerous Examples.

222 pp. 1863. Crown 8vo. 7s. 6d.

This work contains elementary proofs of the principal properties of Conic Sections, together with chapters on Projection and Anharmonic Ratio.

A Treatise on Solid Geometry.

By **PERCIVAL FROST, M.A.**,
St. John's College, and
JOSEPH WOLSTENHOLME, M.A.,
Christ's Coll. Cambridge.

472 pp. 8vo. cloth. 18s. 1863.

The authors have endeavoured to present before students as comprehensive a view of the subject as possible. Intending as they have done to make the subject accessible, at least in the earlier portion, to all classes of students, they have endeavoured to explain fully all the processes which are most useful in dealing with ordinary theorems and problems, thus directing the student to the selection of methods which are best adapted to the exigencies of each problem. In the more difficult portions of the subject, they have considered themselves to be addressing a higher class of students; there they have tried to lay a good foundation on which to build, if any reader should wish to pursue the science beyond the limits to which the work extends.

By **PERCIVAL FROST, M.A.**

Late Fellow of St. John's College;
Mathematical Lecturer of King's College.

Newton's Principia

SECTIONS 1, 2, and 3.

WITH NOTES AND ILLUSTRATIONS.

ALSO A

Collection of Problems

*Principally intended as Examples of
Newton's Methods.*

Second Edit. 288 pp. (1863). 10s. 6d.

The author's principal intention is to explain difficulties which may be encountered by the student on first reading the Principia, and to illustrate the advantages of a careful study of the methods employed by Newton, by showing the extent to which they may be applied in the solution of problems; he has also endeavoured to give assistance to the student who is engaged in the study of the higher branches of Mathematics, by representing in a geometrical form several of the processes employed in the Differential and Integral Calculus, and in the analytical investigations of Dynamics.

By **JOHN E. B. MAYOR, M.A.**

Fellow and Classical Lecturer of St. John's
College, Cambridge.

1. Juvenal.

With English Notes and an Index.
New and Revised Edition. *Nearly
Ready.* Crown 8vo. cloth. 7s. 6d.

"A School edition of Juvenal, which, for really ripe scholarship, extensive acquaintance with Latin literature, and familiar knowledge of Continental criticism, ancient and modern, is unsurpassed, we do not say among English School-books, but among English editions generally."—
EDINBURGH REVIEW.

2. Cicero's Second Philippic.

With English Notes.

168 pp. (1861). Fcp. 8vo. cloth. 5s.

The Text is that of Halm's 2nd edition, (Leipzig, Weidmann, 1858), with some corrections from Madvig's 4th Edition (Copenhagen, 1858). Halm's Introduction has been closely translated, with some additions. His notes have been curtailed, omitted, or enlarged, at discretion; passages to which he gives a bare reference, are for the most part printed at length; for the Greek extracts an English version has been substituted. A large body of notes, chiefly grammatical and historical, has been added from various sources. A list of books useful to the student of Cicero, a copious Argument, and an Index to the introduction and notes, complete the book.

The Chief Rules of Latin Syntax.

COMPILED BY

G. HALE PUCKLE, M.A.

Head Master of Windermere College.

Fcp. 8vo. 1s.

Rules for the Quantity of Syllables in Latin.

Fcp. 8vo. 1s.

An Elementary Latin Grammar.

By H. J. ROBY, M.A.,

Under-Master of Dulwich College Upper School, late Fellow and Classical Lecturer of St. John's College, Cambridge.

18mo. 2s. 6d.

The Author's experience in practical teaching has induced an attempt to treat Latin Grammar in a more precise and intelligible way than has been usual in school books. The facts have been derived from the best authorities, especially Madvig's Grammar and other works. The works also of Lachmann, Ritschl, Key, and others have been consulted on special points. The accidence and prosody have been simplified and restricted to what is really required by boys. In the Syntax an analysis of sentences has been given, and the uses of the different cases, tenses and moods briefly but carefully described. Particular attention has been paid to a classification of the uses of the subjunctive mood, to the prepositions, the *oratio obliqua*, and such sentences as are introduced by the English 'that.' Appendices treat of the Latin forms of Greek nouns, abbreviations, dates, money, &c. The Grammar is written in English.

ELEMENTARY HISTORY OF THE Book of Common Prayer.

For the Use of Schools and popular reading.

By FRANCIS PROCTER, M.A.,

Vicar of Witton, Norfolk, late Fellow of St. Catharine's College, Cambridge.

18mo. cloth. 2s. 6d.

The Author having been frequently urged to give a popular abridgement of his larger work in a form which should be suited for use in Schools and for general readers, has attempted in this book to trace the History of the Prayer-Book, and to supply to the English reader the general results which in the larger work are accompanied by elaborate discussions and references to authorities indispensable to the student. It is hoped that this book may form a useful manual to assist people generally to a more intelligent use of the Forms of our Common Prayer.

By B. DRAKE, M.A.

Late Fellow of King's Coll. Cambridge.

1. Demosthenes on the Crown.

With English Notes.

Second Edition. To which is prefixed *ÆSCHINES AGAINST CTESIPHON*. With English Notes.

287 pp. (1860). Fcap. 8vo. cl. 5s.

The first edition of the late Mr. Drake's edition of Demosthenes de Corona having met with considerable acceptance in various Schools, and a new edition being called for, the Oration of *Æschines* against *Ctesiphon*, in accordance with the wishes of many teachers, has been appended with useful notes by a competent scholar.

2. *Æschyli Eumenides*

With English Verse Translation, Copious Introduction, and Notes.

8vo. 144. pp. (1853). 7s. 6d.

"Mr. Drake's ability as a critical Scholar is known and admitted. In the edition of the *Eumenides* before us we meet with him also in the capacity of a Poet and Historical Essayist. The translation is flowing and melodious, elegant and scholarlike. The Greek Text is well printed: the notes are clear and useful."—GUARDIAN.

By C. MERIVALE, B.D.

Author of "History of Rome," &c.

Sallust.

With English Notes.

Second Edition. 172 pp. (1858).

Fcap. 8vo. 4s. 6d.

"This School edition of Sallust is precisely what the School edition of a Latin author ought to be. No useless words are spent in it, and no words that could be of use are spared. The text has been carefully collated with the best editions. With the work is given a full current of extremely well-selected annotations."—THE EXAMINER.

The "*CATILINA*" and "*JUGURTHA*" may be had separately, price 2s. 6d. each, bound in cloth.

By the Rev. J. WRIGHT, M.A.
Of Trinity College, Cambridge.

1. Help to Latin Grammar.

With Easy Exercises, and Vocabulary.
Crown 8vo. cloth. 4s. 6d.

Never was there a better aid offered alike to teacher and scholar in that arduous pass. The style is at once familiar and strikingly simple and lucid; and the explanations precisely hit the difficulties, and thoroughly explain them."—ENGLISH JOURNAL OF EDUCATION.

2. Hellenica.

A FIRST GREEK READING BOOK.
Second Edition. With Vocabulary.
Fcap. 8vo. cl. 3s. 6d.

In the last twenty chapters of this volume, Thucydides sketches the rise and progress of the Athenian Empire in so clear a style and in such simple language, that the author doubts whether any easier or more instructive passages can be selected for the use of the pupil who is commencing Greek.

3. The Seven Kings of Rome.

A First Latin Reading Book.
Third Edit. Fcap. 8vo. cloth. 3s.

This work is intended to supply the pupil with an easy Construing-book, which may, at the same time, be made the vehicle for instructing him in the rules of grammar and principles of composition. Here Livy tells his own pleasant stories in his own pleasant words. Let Livy be the master to teach a boy Latin, not some English collector of sentences, and he will not be found a dull one.

4. Vocabulary and Exercises on "The Seven Kings of Rome."

Fcp. 8vo. cloth. 2s. 6d.

* * The Vocabulary and Exercises may also be had bound up with "The Seven Kings of Rome." 5s. cloth.

By EDWARD THRING, M.A.
Head Master of Uppingham School.

Elements of Grammar Taught in English.

With Questions.
Third Edition. 136 pp. (1860).
Demy 18mo. 2s.

2. The Child's English Grammar.

New Edition. 86 pp. (1859). Demy
limp cloth, 18mo. 1s.

The Author's effort in these two books has been to point out the broad, beaten, every-day path, carefully avoiding digressions into the byeways and eccentricities of language. This Work took its rise from questionings in National Schools, and the whole of the first part is merely the writing out in order the answers to questions which have been used already with success. Its success, not only in National Schools, from practical work in which it took its rise, but also in classical schools, is full of encouragement.

3. A Latin Gradual.

A First Latin Construing Book for Beginners.
167 pp. 1864. 18mo. cloth. 2s. 6d.

The main plan of this little work has been well tested: experience however has led to considerable changes in the way of working this out.

The intention is to supply by easy steps a knowledge of Grammar, combined with a good vocabulary; in a word, a book which will not require to be forgotten again as the learner advances.

A short practical manual of common Mood constructions, with their English equivalents form the second part.

4. School Songs.

A COLLECTION OF SONGS FOR
SCHOOLS.
WITH THE MUSIC ARRANGED FOR
FOUR VOICES.

*Edited by Rev. E. THRING and
H. RICCIUS.*

Music Size. 7s. 6d.

By EDWARD THRING, M.A.

5. A First Latin Construing Book.

104 pp. (1855). Fcap. 8vo. 2s. 6d.

This Construing Book is drawn up on the same sort of graduated scale as the Author's *English Grammar*. Passages out of the best Latin Poets are gradually built up into their perfect shape. The few words altered, or inserted as the passages go on, are printed in Italics. It is hoped by this plan that the learner, whilst acquiring the rudiments of language, may store his mind with good poetry and a good vocabulary.

By C. J. VAUGHAN, D.D.

Vicar of Doncaster, and Chaplain in Ordinary to the Queen.

St. Paul's Epistle to the Romans.

The Greek Text with English Notes.

Second Edition. Crown 8vo. cloth. (1861). 6s.

By dedicating this work to his elder Pupils at Harrow, the Author hopes that he sufficiently indicates what is and what is not to be looked for in it. He desires to record his impression, derived from the experience of many years, that the Epistles of the New Testament, no less than the Gospels, are capable of furnishing useful and solid instruction to the highest classes of our Public Schools. If they are taught accurately, not controversially; positively, not negatively; authoritatively, yet not dogmatically; taught with close and constant reference to their literal meaning, to the connexion of their parts, to the sequence of their argument, as well as to their moral and spiritual instruction; they will interest, they will inform, they will elevate; they will inspire a reverence for Scripture never to be discarded, they will awaken a desire to drink more deeply of the Word of God, certain hereafter to be gratified and fulfilled.

Notes for Lectures On Confirmation.

With Suitable Prayers.

By C. J. VAUGHAN, D.D.

6th Edition. 70 pp. (1864). Fcp. 8vo. 1s. 6d.

This work, originally prepared for the use of Harrow School, is published in the belief that it may assist the labours of those who are engaged in preparing candidates for Confirmation, and who find it difficult to lay their hand upon any one book of suitable instruction at once sufficiently full to furnish a synopsis of the subject, and sufficiently elastic to give free scope to the individual judgment in the use of it. It will also be found a hand-book for those who are being prepared, as presenting in a compact form the very points which a lecturer would wish his hearers to remember.

The Church Catechism Illustrated and Explained. By ARTHUR RAMSAY, M.A.

Second Edition. 18mo. 1s. 6d.

Hand-Book to Butler's Analogy. By C. A. SWAINSON, M.A. 55 pp. (1856). Crown 8vo. 1s. 6d.

History of the Christian Church during the First Three Centuries, and the Reformation in England. By W. SIMPSON, M.A. Fourth Edition. Fcp. 8vo. cloth. 3s. 6d.

Analysis of Paley's Evidences of Christianity. By CHARLES H. CROSSE, M.A. 115 pp. (1855). 18mo. 3s. 6d.

CAMBRIDGE MANUALS

FOR THEOLOGICAL STUDENTS.

This Series of THEOLOGICAL MANUALS has been published with the aim of supplying Books concise, comprehensive, and accurate; convenient for the Student, and yet interesting to the general reader.

- 1. History of the Christian Church during the Middle Ages.** By ARCHDEACON HARDWICK. Second Edition. 482 pp. (1861). With Maps. Crown 8vo. cloth. 10s. 6d.

This Volume claims to be regarded as an integral and independent treatise on the Mediæval Church. The History commences with the time of Gregory the Great, to the year 1520,—the year when Luther, having been extruded from those Churches that adhered to the Communion of the Pope, established a provisional form of government and opened a fresh era in the history of Europe.

- 2. History of the Christian Church during the Reformation.** By ARCHDN. HARDWICK. 459 pp. (1856). Crown 8vo. cloth. 10s. 6d.

This Work forms a Sequel to the Author's Book on The Middle Ages. The Author's wish has been to give the reader a trustworthy version of those stirring incidents which mark the Reformation period.

- 3. History of the Book of Common Prayer.** With a Rationale of its Offices. By FRANCIS PROCTER, M.A. Fifth Edition. 464 pp. (1860). Crown 8vo. cloth. 10s. 6d.

In the course of the last twenty years the whole question of liturgical knowledge

has been reopened with great learning and accurate research, and it is mainly with the view of epitomizing their extensive publications, and correcting by their help the errors and misconceptions which had obtained currency, that the present volume has been put together.

- 4. History of the Canon of the New Testament during the First Four Centuries.** By BROOKE FOSS WESTCOTT, M.A. 594 pp. (1855). Crown 8vo. cloth. 12s. 6d.

The Author has endeavoured to connect the history of the New Testament Canon with the growth and consolidation of the Church, and to point out the relation existing between the amount of evidence for the authenticity of its component parts and the whole mass of Christian literature. Such a method of inquiry will convey both the truest notion of the connexion of the written Word with the living Body of Christ, and the surest conviction of its divine authority.

- 5. Introduction to the Study of the GOSPELS.** By BROOKE FOSS WESTCOTT, M.A. 458 pp. (1860). Crown 8vo. cloth. 10s. 6d.

This book is intended to be an Introduction to the *Study* of the Gospels. In a subject which involves so vast a literature much must have been overlooked; but the Author has made it a point at least to study the researches of the great writers, and consciously to neglect none.

Uniformly printed in 18mo.
with Vignette Titles by
T. Woolner, W. Holman
Hunt, J. Noel Paton, &c.



Handsomely bound in extra cloth, 4s. 6d. Morocco plain, 7s. 6d. Morocco extra, 10s. 6d. each Volume.

1. THE GOLDEN TREASURY
OF THE BEST SONGS AND LYRICAL POEMS IN THE ENGLISH
LANGUAGE.
Selected and arranged, with Notes, by F. T. PALGRAVE.
2. THE FAIRY BOOK.
THE BEST POPULAR FAIRY STORIES, SELECTED AND RENDERED ANEW
By the Author of "John Halifax."
3. THE CHILDREN'S GARLAND.
FROM THE BEST POETS.
Selected and Arranged by COVENTRY PATMORE.
4. THE PILGRIM'S PROGRESS
FROM THIS WORLD TO THAT WHICH IS TO COME.
By JOHN BUNYAN.
Large-paper copies, crown 8vo. 7s. 6d.; or bound in half morocco, 10s. 6d.
5. THE BOOK OF PRAISE.
FROM THE BEST ENGLISH HYMN WRITERS.
Selected and arranged by ROUNDELL PALMER.
. ROYAL EDITION, 6s. Morocco Extra, 12s. 6d. LARGE-TYPE
EDITION, demy 8vo. handsomely printed and bound, 10s. 6d.; or best Levant
morocco by Riviere, 28s.
6. BACON'S ESSAYS AND COLOURS OF GOOD
AND EVIL.
With Notes and Glossarial Index, by W. ALDIS WRIGHT, M.A.,
Trinity College, Cambridge.
. Large Paper Copies, Crown 8vo. 7s. 6d., or bound in half-morocco, 10s. 6d.
7. THE JEST BOOK.
THE CHOICEST ANECDOTES AND SAYINGS
Selected and Arranged by MARK LEMON.
With a Vignette by CHARLES KEAN.
8. THE BALLAD BOOK.
A SELECTION OF THE CHOICEST BRITISH BALLADS.
Edited by WILLIAM ALLINGHAM.
With a Vignette by J. NOEL PATON, R.S.A.
.....
JONATHAN PALMER, PRINTER, CAMBRIDGE.

